

# A&G

ANTIQUES &  
GARDEN SHOW  
NASHVILLE



GRACIE.  
FOUNDED 1898

# THANK YOU TO OUR SPONSORS

## FOUNDING SPONSOR

TVV Capital

## NATIONAL MEDIA SPONSORS

*Business of Home* | *FLOWER* | *Garden & Gun* | *Luxe Interiors + Design*  
Hoffman Media

*The Cottage Journal* | *Southern Home* | *Southern Lady* | *Victoria*  
*MILIEU* | *VERANDA*

## LECTURE SERIES SPONSOR

Gracie Studio

## KEYNOTE LECTURE SPONSOR

*MILIEU*

## GARDEN & LANDSCAPE DESIGN LECTURE SPONSOR

*FLOWER*

## LIFESTYLE LECTURE SPONSORS

Hoffman Media

*The Cottage Journal* | *Southern Home* | *Southern Lady* | *Victoria*

## DESIGN PANEL SPONSORS

*Luxe Interiors + Design* | Vicki & Kerry McCluggage

## BENEFACTORS

### RECEPTION SPONSORS

William Stamps Farish Fund  
DeLozier Cosmetic Surgery Center

### PREVIEW PARTY SPONSORS

*VERANDA*

Pinnacle Financial Partners  
Jack Daniel Distillery  
Jackson Durham Events  
*Nfocus*

### BOURBON PARTY SPONSORS

Brown-Forman  
Gen Cap America  
Jackson Durham Events  
*Nashville Lifestyles*  
Nashville Predators

## PARTNER SPONSORS

ADAC

Fabricut, Inc. • Kravet, Inc.  
Peacock Alley • Travis & Company  
Ballard Designs  
Circa Lighting  
Circa Creative Studios  
Crosslin  
Ingram Charities  
Northern Trust  
Tennessee Titans  
The Scout Guide  
Vintage Millworks

## HOSPITALITY SPONSORS

ECON

Publix Super Markets Charities  
à la Bonne Femme

## HOTEL SPONSORS

JW Marriott  
The Westin Nashville  
Cambria Hotel Nashville  
Downtown

## GARDEN SPONSORS

Hartley Botanic  
West Cook Builders  
Jones Lang LaSalle  
Louise B. Wallace Foundation  
Louie M. & Betty M. Phillips  
Foundation  
Rogers Manufacturing

## EARLY SHOPPING SPONSORS

*VERANDA*

*Atlanta Homes & Lifestyles*  
Currey & Company

## MUSIC IN THE GARDENS SPONSORS

Brasfield & Gorrie | Highwoods Properties | Martin & Zerfoss  
Pendleton Square Trust Co., LLC | Sarah Flint

## CONTRIBUTING SPONSORS

Conserv Capital | Joyner & Hogan | Mobile Communications America  
Parking Management Company | Stradley Davidson Linen Collective  
The Wine Chap | Walker Lumber

## MEDIA SPONSORS

*Atlanta Homes & Lifestyles* | *Belle Meade Lifestyle* | *Blackbird Media* | *Brentwood Lifestyle*  
*Edible Nashville* | *Franklin Lifestyle* | *Greater Nashville House & Home & Garden*  
*Hamilton County Herald* | *LAMAR* | *Nashville Convention & Visitors Corp* | *Nashville Interiors*  
*Nashville Lifestyles* | *Nashville Public Television* | *Nfocus* | *Sophisticated Living Nashville*  
*StyleBlueprint* | *The Nashville Sign* | *The Tennessean* | *TN Ledger*  
*Williamson Herald* | *YOUR Williamson*

*Benefiting Cheekwood and ECON Charities*



# Home is where your story begins.

**FEBRUARY 11-13, 2022**

**MUSIC CITY CENTER NASHVILLE, TENNESSEE**

<b>WELCOME FROM THE SHOW CHAIRS</b>	4
<b>SHOW SCHEDULE</b>	5
<b>2022 HONORARY CHAIR</b> Bunny Williams	7
<b>KEYNOTE LECTURE</b> Creating A Home: The Evolution of My 160-Acre Bedford Farm <i>Martha Stewart</i>	15
<b>GARDEN &amp; LANDSCAPE DESIGN LECTURE</b> The Making of a Garden Over 30 Years <i>A lecture by Bunny Williams</i>	16
<b>LIFESTYLE LECTURE:</b> A Conversation with Clea Shearer and Joanna Teplin of The Home Edit <i>In conversation with</i> <i>Gen Sohr of Pencil &amp; Paper Co.</i>	20
<b>DESIGN PANEL:</b> LexTalks Live & In Person with Alexa Hampton: An Inside Look at the Careers and Stories Behind Design's Top Talent <i>Alexa Hampton in conversation with Jenn &amp;</i> <i>Mike Gracie, Christopher Spitzmiller and</i> <i>Ashley Whittaker</i>	22
<b>2022 GARDEN DESIGNERS</b>	27
<b>ONLINE AUCTION</b>	37
<b>CHEEKWOOD</b>	42
<b>ECON CHARITIES</b>	46
<b>SHOW LEADERSHIP</b>	68
<b>NATIONAL ADVISORY COMMITTEE</b>	69
<b>2022 COMMITTEE</b>	70
<b>2022 SHOW SUPPORTERS</b>	72
<b>SPECIAL THANKS</b>	75
<b>2020 / 2021 VIRTUAL CAMPAIGN SUPPORTERS</b>	77
<b>HORTICULTURE DEALERS</b>	78
<b>ANTIQUE DEALERS</b>	79
<b>SHOW FLOOR MAP</b>	80





## 2022 Antiques & Garden Show of Nashville

**P.O. BOX 50950, NASHVILLE, TN 37205 • (615) 352-1282**

**ANTIQUESANDGARDENSHOW.COM | #AGS2022**





# WELCOME TO THE 32ND ANNUAL Antiques & Garden Show of Nashville

We are thrilled to welcome you back to Nashville. Like each of you, we were not expecting to not have an in-person Show in 2021 and it was greatly missed. Ironically, we chose the theme “**Home is where your story begins**” in early 2020 before we realized home would take on a whole new meaning. Whether you consider “Home” a place of idealized childhood memories or a current state of everyday life, each home has a story and is a special place to feel your most true self. As we began our planning, we had several ideologies. Upon arrival, we wanted to exude a warm environment with home-like familiarity. We have hopes that as you walk our Show floor and visit our beautiful gardens and gathering spaces that you will feel just that.

**Gracie's** timeless handpainted wallpaper has been the cornerstone of our design process. Their wallpaper has been incorporated into every aspect of our Show and for that we are incredibly grateful. You will find they worked with all of our outstanding gardeners to make each space uniquely beautiful. We have been blown away with **Anne Daigh, Joseph Hillenmeyer, Cheekwood**, all of their vendors and partners, and our garden committee, and we know you will be as well. Thank you, from the bottom of our hearts, to each one of you!





Each one of our lecture series speakers is a tastemaker in their own way. **Martha Stewart**, our **Keynote**, is a visionary in all things home. She and her talented staff provide trusted, timely, and useful information on all aspects of everyday living: cooking, entertaining, gardening, home renovating, collecting, organizing, crafting, healthy living, holidays, weddings and pet care, both in print and social media. **Bunny Williams**, our beloved **Honorary Chair**, is once again beckoning crowds with her omnipotent skill and knowledge in all aspects of design. Our panelists on Saturday bring their individual talents and perspective on creating and maintaining home whether it be how to organize with **The Home Edit** or sharing their version of home with the first-ever **LexTalks Live with Alexa Hampton, Ashley Whittaker, Christopher Spitzmiller and Mike and Jenn Gracie of Gracie Studio**.

To begin, we would like to express our endless amount of gratitude to our hundreds of volunteers who show up behind the scenes to make the Antiques & Garden Show a reality. It seems like an impossible task. We would like to also thank over 150 dealers and gardeners that prioritize this Show and join us year after year attracting each of our thousands of patrons. To the numerous corporate sponsors, benefactors, patrons that without you, the Show would not be possible, we would also like to express our sincere appreciation. A special thank you to **Andrew Byrd and TVV Capital** for their 32 years of continued support. We appreciate each of you for helping the Show continue to support Cheekwood and ECON Charities. Thank you for making this Show the longest-running and largest show of its kind in the nation.

We sincerely hope you enjoy your weekend with us!

Fondly,

Ashley Smith and Julia Spickard  
2022 General Chairmen





## SHOW SCHEDULE

### THURSDAY, FEBRUARY 10

6:30 – 9 PM

Preview Party Show Floor

### FRIDAY, FEBRUARY 11

9 AM – 6 PM

Show Open

11 AM – 12 PM

KEYNOTE LECTURE:

Creating A Home: The Evolution of My 160-Acre Bedford Farm  
*Martha Stewart*

2 – 3 PM

GARDEN & LANDSCAPE

DESIGN LECTURE:

The Making of a Garden Over 30 Years  
*A lecture by Bunny Williams*

6:30 – 9 PM

The Bourbon Party  
Center Bar/Garden Area



### SATURDAY, FEBRUARY 12

9 AM – 6 PM

Show Open

11 AM – 12 PM

LIFESTYLE LECTURE:

A Conversation with Clea Shearer and Joanna Teplin of The Home Edit  
*In conversation with Gen Sohr of Pencil & Paper Co.*

2 – 3 PM

DESIGN PANEL:

LexTalks Live & In Person with Alexa Hampton: An Inside Look at the Careers and Stories Behind Design's Top Talent  
*Alexa Hampton in conversation with Jenn & Mike Gracie, Christopher Spitzmiller and Ashley Whittaker*

3:30 - 5:30 PM

Music in the Gardens

### SUNDAY, FEBRUARY 13

11 AM – 4 PM

Show Open | Sunday Shopping in the Garden

*Coffee, Bloody Marys, pastries and snacks available for purchase while you browse the Show Floor*

All lectures are held in the Davidson Ballroom

Book signings to follow lectures in the Ballroom Lobby

Preview Party held on the Show Floor, Bourbon Party and Music in the Gardens held at Center Bar/Garden Area

### SERVICES AVAILABLE DURING SHOW HOURS:

Shipping, Food & Beverage and Coffee are available. Hours may vary. Refer to the map on the inside back cover and signs throughout the Show for locations and hours. Visit customer service in the lobby with questions.

## JOIN US FOR THESE SPECIAL EVENTS

### Preview Party

THURSDAY, FEBRUARY 10

6:30 – 9 PM

The spectacular opening night kick-off gala is one of the most anticipated events of the year.

Join us for previewing and shopping the Show early with a stylish, sell-out crowd from all over the country.

### Bourbon Party

FRIDAY, FEBRUARY 11

6:30 – 9 PM

The Friday night Bourbon Party blends a mix of Southern fare, specially crafted bourbons, and live music on the Show floor. Dress "Nashville cocktail-casual," bring friends and sip the night away while you shop the largest, most unique collection of antiques and garden accouterments in the country.

### Music — IN THE — Gardens

SATURDAY, FEBRUARY 12

3:30 – 5:30 PM

Music City means Music in the Gardens. Listen to talented musicians as you stroll and shop the Show floor.

---

## WELCOME TO NASHVILLE!

---

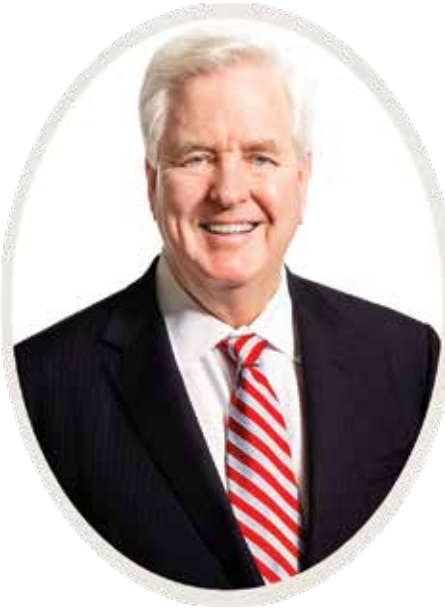
The Board of Directors of the 2022 Antiques & Garden Show of Nashville extends a special thanks to our Founding Sponsor, TVV Capital, our many additional corporate sponsors and individual supporters of the Show. We are grateful for over 400 volunteers who truly make the Show possible, especially our General Chairmen, Ashley Smith and Julia Spickard.

---

### FOUNDING SPONSOR

---

## Andrew Byrd, TVV Capital



Thank you for joining us on this winter day to celebrate the nearing of spring! We hope you enjoy and are inspired by all the beautiful gardens, flowers, and antiques.

In 1987-1988, the President of the Exchange Club (now Economic Club) of Nashville asked me to chair the Nashville Lawn & Garden Show. That year, it became the Nashville Lawn & Garden Fair.

Working with the botanical staff at Cheekwood (Dick Page & Randall Lantz) along with Floyd McDonald, and with the Garden Club of Nashville (Betty B. Graham), we put on one of Nashville's finest shows to educate all Nashvillians on their gardens and landscaping.

Later, when the Antiques show merged into the Antiques & Garden Show of Nashville, I headed Logistics for the first 1990 Show at the Nashville Convention Center. I have supported the Show ever since. As a result, more than a million dollars has been given by the Economic Club Charities to dozens of social service organizations across our city, bettering many people's lives. We are honored to sponsor this Show, bringing beauty, education, and service to our community, while helping to build a beautiful city for all to be proud!

Thank you for coming!  
Andrew W. Byrd



## 2022 HONORARY CHAIR

# Bunny Williams



Considered one of the most talented names in design, Bunny Williams is also an accomplished businesswoman, entrepreneur, author, and philanthropist. A lover of dogs, gardens, and china, Bunny's knowledge and expertise are on par with her enjoyment of life. Her eponymous firm — launched in 1988 following a 22-year apprenticeship with the esteemed Parish-Hadley Associates — has wrought its own indelible imprint and legacy.

Bunny Williams Interior Design is renowned for balancing refined beauty, welcoming livable appeal, and attention to detail. While the creation of delightful rooms is Bunny's passion, her firm's success above all is anchored in long-lasting and valued relationships with its clientele. The resulting commissions over three decades — many for repeat homeowners — are found across the United States and abroad, in city apartments, country estates and cottages; in the mountains and by the water. Bunny's own houses and her long career have provided ample material and inspiration for seven books to date, and she is a sought-after speaker and mentor on design, decoration, gardening, and entertaining.

Bunny grew up in the countryside near Charlottesville, Virginia. Her parents encouraged her passion for the arts and led her to Garland Junior College in Boston, where she studied interior design. A watershed moment at age 15 was visiting the Dorothy Draper-decorated Greenbrier Resort, which had a color palette unlike anything Bunny had ever seen. "It really opened my eyes and the lesson I learned was not to play it safe," shares Bunny.

Upon moving to New York, Bunny worked at Stair & Co., an antique gallery frequented by Sister Parish and Albert Hadley. Bunny subsequently joined Parish-Hadley and remained at the venerable firm for 22 years. "I was honored to work there and was exposed to so much; their extraordinary projects and partnership, the design process, everything. By the time I left, I'd been the secretary, an assistant, and a buyer. I had the tools and experience to run my own enterprise, which I did — starting with three people working out of my guest bedroom!"

Shortly thereafter, fueled by her devotion to gardening, Bunny opened Treillage in 1991 along with her husband, the antique dealer John Rosselli. Considered both groundbreaking and industry changing, Treillage drew A-list designers, editors, and tastemakers to its off-the-beaten-track, Upper East Side destination for the ultimate in home and garden. "Treillage was open for twenty-five years, but all good things come to an end. Now, with Bunny Williams Home, I'm proud to show an entire line of furniture, lighting, art and accessories under one roof."

Never one to rest on her many awards, accolades, and honors, Bunny keeps her eye on what's next, whether it's her collaborations with Ballard Designs, Bunny Williams Home, or her next book. Forward-thinking always, Bunny says, "While it's certainly nice to look back on one's accomplishments, it's more interesting for me to look ahead. The firm, while instilled with my expectations and objectives, is taking on an exciting new dimension with Elizabeth Lawrence as my partner. Together, we are all part of a greater legacy that branches out from Parish-Hadley and it feels very relevant in our fast-paced world. Elizabeth completes my vision and takes it a step further: we work hard and have fun in the process."



# BALLARD DESIGNS®



BUNNY WILLIAMS  
FOR BALLARD DESIGNS



VISIT OUR STORE IN NASHVILLE  
3730 HILLSBORO PIKE



# JACKSON DURHAM



LUXURY EVENT DECOR  
[www.jacksonandurham.com](http://www.jacksonandurham.com)

**circa** LIGHTING®  
EXPERIENCE VISUAL COMFORT



KEIRA XL CHANDELIER  
IN HAND-RUBBED ANTIQUE BRASS  
**DESIGNER: THOMAS O'BRIEN**



**SHOP NOW: [CIRCALIGHTING.COM](https://www.circalighting.com)**

510 MERRITT AVENUE, NASHVILLE 615.922.5222







# Protecting our resources is always job one.

Northern Trust is proud to support the Antiques and Garden Show of Nashville. For more than 130 years, we've been meeting our clients' financial needs while nurturing a culture of caring and a commitment to invest in the communities we serve. Because you can't grow without conservation.

FOR MORE INFORMATION CONTACT

**H. Jon Miller, CFP®, CIMA®**  
Senior Vice President  
50 S LaSalle St. Chicago IL 60603  
[hjm2@ntrs.com](mailto:hjm2@ntrs.com); 312-444-4658

[northerntrust.com](http://northerntrust.com)



**NORTHERN  
TRUST**



# DEBBIE MATHEWS ANTIQUES & DESIGNS

311 WHITE BRIDGE PIKE SUITE B NASHVILLE, TN 37209 | 615- 457- 2102 | [DEBBIEMATHEWS.COM](http://DEBBIEMATHEWS.COM)

Photography: Caroline Sharpnack



Designer: Kevin Isbell @kevinisbell  
Photographer: Don Freeman



# GRACIE

FOUNDED 1898

New York • Dallas • Los Angeles

[www.graciestudio.com](http://www.graciestudio.com)



# MILIEU®

ANTIQUES & GARDEN SHOW OF NASHVILLE *Exclusive Offer*

SUBSCRIBE FOR TWO YEARS (EIGHT ISSUES) FOR ONLY \$30

USE PROMO CODE AGSN22

(FOR U.S. SUBSCRIPTIONS ONLY)

Spring is on its way

SUBSCRIBE BY APRIL 5 TO RECEIVE MILIEU SPRING 2022

[MILIEU-MAG.COM](http://MILIEU-MAG.COM)

INTERIOR DESIGN BY KIT KEMP  
PHOTOGRAPHY BY SIMON BROWN



## KEYNOTE LECTURE

# Creating A Home: The Evolution of My 160-Acre Bedford Farm

FRIDAY, FEBRUARY 11TH | 11 AM - 12 PM

Entrepreneur, bestselling author and Emmy Award-winning television show host Martha Stewart will be keynoting the event.

## ABOUT

Martha's homes, from Turkey Hill onward, have served as the source of inspiration for her brand's magazines, books and television shows. In 2000, she purchased a 1925 farmhouse and dairy farm in New York's Westchester area, intrigued by the possibilities the property offered. She created a horse farm that has both modern and historic buildings, a gorgeously manicured garden, and homes for dozens of different animals. In this talk, Martha will share photos and stories detailing the evolution of the property, from the dairy cows to her latest pandemic projects.



Martha Stewart is the Founder of the first multi-channel lifestyle company, Martha Stewart Living Omnimedia, an entrepreneur, bestselling author of 99 to date lifestyle books and Emmy Award-winning television show host. Reaching more than 100 million devoted fans on a monthly basis through her magazines, television shows, books, and products for the home, Martha is the "go-to" source for the homemaker. She and her talented staff provide trusted, timely, and useful information on all aspects of everyday living: cooking, entertaining, gardening, home renovating, collecting, organizing, crafting, healthy living, holidays, weddings and pet care, both in print and social media.

Raised in Nutley, New Jersey, in a family of six children, Martha developed her passion for cooking, gardening and homekeeping at an early age.

Her mother taught her the basics of cooking, baking, canning, and sewing; her father introduced her to gardening at the age of three. Martha earned a bachelor's degree in history and architectural history at Barnard College. Upon graduating, she became a stockbroker on Wall Street, where she gained her early business training. After moving to Westport, Connecticut, in 1972, she developed a catering business. Her unique visual presentation of food and the elegant recipes she created for her thriving event and catering business were the basis for her first book, *Entertaining*, published in 1982. 98 more have since been published, including recent bestsellers *Martha's Flowers*, *The Martha Manual: How to Do (Almost) Everything*, *Martha Stewart's Organizing*, and *Fruit Desserts*.

Martha's business sense and creative vision provided the framework for launching her namesake company, Martha Stewart Living Omnimedia in 1996, and the expansive multimedia portfolio that includes award-winning properties such as *Martha Stewart Living*, *Martha Stewart Weddings*, *marthastewart.com*, *The Martha Living Show* and *The Martha Show* (which over a span of 19 years earned 18 Emmys), *Martha Stewart's Cooking School* on PBS, *Martha Bakes* on PBS, the Emmy-nominated *Martha & Snoop's Potluck Dinner Party* on VH1, and HGTV's gardening show, *Martha Knows Best*.

Martha Stewart's branded products can be found in thousands of retail locations and on [martha.com](http://martha.com), a direct-to-consumer online platform featuring partners including Amazon, California Closets, Canopy CBD, Easy Spirit, Macy's, Martha Stewart Kitchen, Martha Stewart & Marley Spoon, Martha Stewart Wine Co., Pretty Litter QVC, Sur La Table and Wayfair, as well as a selection of carefully curated goods.

Martha is proud to support the Martha Stewart Center for Living at the Mount Sinai Medical Center in New York, Hudson River Park Friends, Friends of Acadia, and Maine Coast Heritage Trust, among other organizations.

SPONSORED BY:

MILIEU



## GARDEN & LANDSCAPE DESIGN LECTURE

# The Making of a Garden Over 30 Years *A Lecture by Bunny Williams*

FRIDAY, FEBRUARY 11TH | 2 – 3 PM

Bunny will walk through the various gardens she has developed surrounding her house in Falls Village, Connecticut over the course of more than 30 years. Illustrating early versions of her sunken, parterre, vegetable and woodland gardens, along with the spaces that connect each of them, she'll lead us through how they've evolved over time and the lessons she's learned along the way.

### ABOUT

Considered one of the most talented names in design, Bunny is also an accomplished businesswoman, entrepreneur, author, and philanthropist. A lover of dogs, gardens, and china, Bunny's knowledge and expertise is on par with her enjoyment of life. Her eponymous firm — launched in 1988 following a 22-year apprenticeship with the esteemed Parish-Hadley Associates — has wrought its own indelible imprint and legacy.

Bunny Williams Associates is renowned for balancing refined beauty, welcoming livable appeal, and attention to detail. While the creation of delightful rooms is Bunny's passion, her firm's success above all, is anchored in long-lasting and valued relationships with its clientele. The resulting commissions over three decades — many for repeat homeowners — are found across the United States and abroad, in city apartments, country estates and

cottages; in the mountains and by the water. Bunny's own houses and her long career have provided ample material and inspiration for seven books to date, and she is a sought-after speaker and mentor on design, decoration, gardening, and entertaining.

Bunny grew up in the countryside near Charlottesville, Virginia. Her parents encouraged her passion for the arts and led her to Garland Junior College in Boston, where she studied interior design. A watershed moment at age 15 was visiting the Dorothy Draper-decorated

---

Books are available for purchase in the Show floor lobby during the Show and outside the Davidson Ballroom after this lecture. A portion of each book sale goes back to support the Antiques & Garden Show benefiting Cheekwood and ECON Charities.







Greenbrier Resort, which had a color palette unlike anything Bunny had ever seen. “It really opened my eyes and the lesson I learned was not to play it safe,” shares Bunny.

Upon moving to New York, Bunny worked at Stair & Co., an antiques gallery frequented by Sister Parish and Albert Hadley. Bunny subsequently joined Parish-Hadley and remained at the venerable firm for 22 years. “I was honored to work there and was exposed to so much; their extraordinary projects and partnership, the design process, everything.

By the time I left, I’d been the secretary, an assistant, and a buyer. I had the tools and experience to run my own enterprise, which I did — starting with three people working out of my guest bedroom!”

Shortly thereafter, fueled by her devotion to gardening, Bunny opened Treillage in 1991 along with her husband, the antiques dealer John Rosselli. Considered both ground breaking and industry changing, Treillage drew A-list designers, editors, and tastemakers to its off-the-beaten track, Upper East Side destination for the ultimate in home and garden. “Twenty-five years ago, Treillage was something entirely new, but all good things come to an end. Now, with Bunny Williams Home, I’m proud to show an entire line under one roof.”

Never one to rest on her many awards, accolades, and honors, Bunny keeps her eye on what’s next, whether it’s her collaborations with Ballard Designs, Bunny Williams Home, or her next book. Forward thinking always, Bunny says, “While it’s certainly nice to look back on one’s accomplishments, it’s more interesting for me to look ahead. The firm, while instilled with my expectations and objectives, is taking on an exciting new dimension with Elizabeth Lawrence as my partner. Together, we are all part of a greater legacy that branches out from Parish-Hadley and it feels very relevant in our fast-paced world. She completes my vision and takes it a step further: we work hard and have fun in the process.”

**SPONSORED BY**

**FLOWER**  
HOUSE | GARDEN | LIFESTYLE



# LIVING FLORAL

*Entertaining and  
Decorating with Flowers*

**MARGOT SHAW**  
Editor-in-Chief  
of *Flower* magazine

Foreword by  
Charlotte Moss

**RIZZOLI**  
NEW YORK

**EDITOR'S BUNDLE:  
SIGNED BOOK PLUS ONE-YEAR SUBSCRIPTION TO FLOWER, \$45**

**MAKES A GREAT GIFT**  
► [flowermagshop.com](http://flowermagshop.com)





*Inspiration in Each Issue*

*the*  
**cottage**  
*journal*

Southern  
home

Southern Lady

Victoria

[hoffmanmedia.com](http://hoffmanmedia.com)



## LIFESTYLE LECTURE

# A Conversation with Clea Shearer and Joanna Teplin of The Home Edit

*In conversation with Gen Sohr of Pencil & Paper Co.*

SATURDAY, FEBRUARY 12TH | 11 AM – 12 PM

Clea Shearer and Joanna Teplin of The Home Edit started their organizing business the day they met six years ago with a singular dream—combine organizing with aesthetics and share it with the world. Their hope to marry form and function proved fruitful and the duo are now operating organizing branches in cities across the US, are the authors of two New York Times' number one best selling books, the stars of the Emmy-nominated Netflix series *Get Organized with The Home Edit* and creators of multiple product lines sold in stores across the globe. Join Clea and Joanna for a casual, in-depth chat with design-maven Gen Sohr, as the two share their secrets for conquering your clutter with their unique brand of interior styling, practicality and humor.



### ABOUT: THE HOME EDIT

California transplants Clea Shearer and Joanna Teplin met when they both moved to Nashville over five years ago. Brought together by a mutual friend, it was friendship at first text, and business partnership immediately thereafter when the duo launched The Home Edit with the goal of reinventing traditional organizing by merging function with design. Since then, they have organized the homes of Khloe Kardashian, Mandy Moore, and Gwyneth Paltrow; built an Instagram following of over five million people, filmed their own Emmy-nominated Netflix series, “*Get Organized with The Home Edit*,” alongside Reese Witherspoon’s network Hello Sunshine; and released three books, including New York Times bestsellers, “*The Home Edit: A Guide to Organizing and Realizing Your House Goals*” and “*The Home Edit Life: The No-Guilt Guide to Owning What You Want and Organizing Everything*.”

---

Books are available for purchase in the Show floor lobby during the Show and outside the Davidson Ballroom after this lecture. A portion of each book sale goes back to support the Antiques & Garden Show benefiting Cheekwood and ECON Charities.





## ABOUT: GEN SOHR

Southern lifestyle tastemaker, interior designer and fashion maven, Gen Sohr, is the founder of Pencil & Paper Co., a celebrated lifestyle media company that reimagines retail through curated content, trusted shopping recommendations and thoughtful product development, all while building a community that fosters and celebrates female creatives and brands.

Gen launched Pencil & Paper Co. in Nashville in 2012 after nearly 20 years of bringing large-scale retail concepts to life for Old Navy, The Body Shop and Victoria's Secret. Gen's love of color, pattern and all things "happy" can be experienced daily from what she wears, to the home she has created for her family, to how she entertains and travels, and this joyful style is reflected throughout P+P's media, monthly Happy Mail box subscription, product collaborations and events. Follow along on Instagram at [@pencilandpaperco](#) and [@pandpcreativeclub](#)!

## SPONSORED BY:





## DESIGN PANEL

# LexTalks Live & In Person with Alexa Hampton: *An Inside Look at the Careers and Stories Behind Designs Top Talent*

Alexa Hampton in conversation with Jenn & Mike Gracie, Christopher Spitzmiller and Ashley Whittaker

**SATURDAY, FEBRUARY 12TH | 2 – 3 PM**

World renowned designer Alexa Hampton takes her popular “52 Weeks of Design” interview series on the road for the first-ever in-person LexTalks Live, during which she’ll interview design panelists Jenn & Mike Gracie, Christopher Spitzmiller and Ashley Whittaker. Take an inside look into the careers of the industry’s top designers and tastemakers as Alexa leads the conversation spanning the topics of design, gardening and lifestyle. Enjoy behind-the-scenes stories and a celebration of the world of design accompanied by a slideshow presentation with vivid and insightful imagery.



### ABOUT: ALEXA HAMPTON

Since Alexa Hampton took the reins of Mark Hampton, her father’s iconic firm, as owner and president in 1998, she has advanced its legacy of elegant, practical, classically based interiors for modern living. Regularly named to Architectural Digest’s AD100 and House Beautiful’s Top Designer list as well as Elle Décor’s A-List, Hampton translates the classical principles of good design and decoration into some of today’s most elegant, enduring, and functional domestic landscapes.

Like her father, Hampton is a highly regarded author with two critically praised books on design to date – *The Language of Interior Design* and

*Decorating in Detail*. In an ever-expanding portfolio of acclaimed products, Hampton provides smart, stylish, design-rich solutions for every aspect of the home. On-going Hampton-designed collections include furniture for Theodore Alexander, lighting for Visual Comfort & Co. and Generation Lighting, window treatments for The Shade store, fabrics and trims for Kravet, broadloom carpet for Stark, pillows and bedding for Eastern Accents, table linens for La Gallina Matta, hardware for SA Baxter, mantels for Chesney’s, architectural mouldings for White River, and flooring for Globus Cork.

Hampton sits on the board of trustees for the New York School of Interior Design and the Institute of Classical Architecture & Art.

---

Books are available for purchase in the Show floor lobby during the Show and outside the Davidson Ballroom after this lecture. A portion of each book sale goes back to support the Antiques & Garden Show benefiting Cheekwood and ECON Charities.





#### ABOUT: JENN & MIKE GRACIE

Jennifer has considered herself employed by the family business since birth, having had a love of Chinese porcelain and wallpaper from the start, even bringing examples of Gracie wallpaper to school to show and tell. In college, she studied English Literature and Sociology. A recent achievement is successfully planning a pandemic cross county move and wedding. She is Creative Director at Gracie, and loves designing new wallpapers, scuba diving, stand up comedy and perfecting her shortbread cookie recipe.

Mike studied pre-law at Northeastern University, but chose to go into the family industry instead of proceeding on to law school. While gaining experience as a furniture salesperson at a San Francisco showroom, Mike began pursuing an acting career there. He returned to New York to join the family business and to continue his acting career, appearing in independent films and off-Broadway plays. Mike found his greatest satisfactions and rewards in the family business where he has spent a 26-year career.

#### ABOUT: CHRISTOPHER SPITZMILLER

Christopher's iconic ceramic lamp designs draw inspiration from classical forms and traditional gem like glazes. He began his career in Georgetown in Washington, D.C. where he worked out of an old school house near Dumbarton Oaks. Shortly thereafter, his work received critical acclaim and his reputation as a noteworthy ceramicist began to emerge. In the summers, he worked from Mecox Gardens in Southampton as an artist in residence and such designers as Albert Hadley, Richard Keith Langham and Suzanne Rheinstein began to commission his work.

Since 1996, Christopher has been concentrating his efforts on his unique lamp designs. The lamps are of timeless appeal and luxurious quality. Beautiful classic forms are drenched in bold vibrant rich glazes. Each one of a kind lamp is set in a hand turned hardwood base, which is water gilt with 23k yellow gold or 9k white gold

for a silver finish. Currently, Christopher is expanding his designs to table ware and other ceramic accessories.

Christopher's work is often featured in celebrated publications such as Architectural Digest, House Beautiful, Elle Décor, Departures, The New York Times and the Wall Street Journal. He has had the honor of making lamps for the current Oval Office, the past two White House Administrations, as well the Blair House and other distinguished American homes.

When not in the Studio, Christopher can be found at his farm in Millbrook, NY gardening, bee keeping, making jam, cooking for friends, or tending to his flock of heritage breed chickens. He also enjoys the pleasure of giving back to the community by serving on the board of the local time-honored Lenox Hill Neighborhood House and as the Vice Chair of the Kips Bay Boys & Girls Club President's Dinner.

#### ABOUT: ASHLEY WHITTAKER

Described as the "neo-traditionalist", Ashley Whittaker reveals her fresh and modern perspective on traditional design and architecture in all of her work. The New York City decorator's hallmarks are distinctively classic taste and chic sophistication. Characterized by tailored rooms that incorporate charming detail and engaging play on color and pattern, Whittaker's signature style is immediately evident.

Listed on Elle Décor's A-List of top designers, Ashley's work has been published in The New York Times, Veranda, Southern Living, Coastal Living, Domino, and most notably, on the cover of House Beautiful on six separate occasions. Achieving instant and renowned respect from the industry, Ashley shows a natural and effortless ability to create flawless interiors. Ashley credits her training in the design industry to legendary decorator, Markham Roberts, for whom she worked before starting out on her own in 2006. Her work includes projects in New York, Connecticut, Rhode Island, Florida, California and Montana.





# luxe

INTERIORS+DESIGN®

SOUTHEAST



**DESIGN** where you live.

ARIZONA | AUSTIN + SAN ANTONIO | CHICAGO | COLORADO | DALLAS + FORT WORTH | HAMPTONS  
GREATER NEW YORK | HOUSTON | LOS ANGELES | MIAMI | NAPLES + SARASOTA | NATIONAL  
PACIFIC NORTHWEST | PALM BEACH + BROWARD | SAN FRANCISCO | SOUTHEAST | SOUTHERN CALIFORNIA

FOR THE BEST DESIGN CONTENT, RESOURCES AND INSPIRATION, VISIT [LUXESOURCE.COM](https://luxesource.com).

# ADAC

From furniture and lighting to wallcoverings and fabrics, ADAC's 60+ showrooms offer high-end home furnishings that are not only well crafted, they come with a unique point of view that is sure to inspire.



Fabricut



Kravet Inc



Peacock Alley



Travis & Company

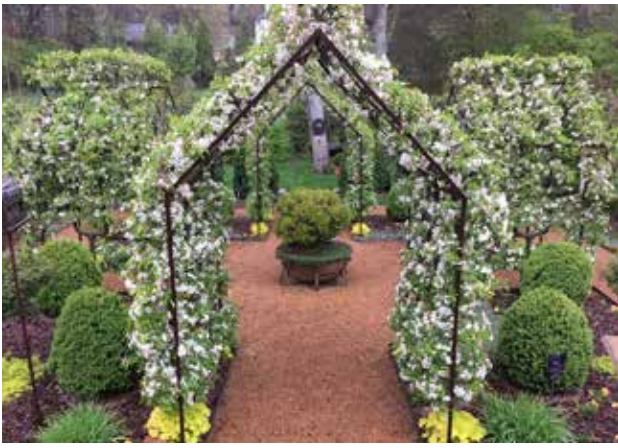
351 Peachtree Hills Ave, Atlanta  
Monday – Friday | Open to the Trade & Public

@adacatlanta | #adacatlanta  
More info at [adacatlanta.com](http://adacatlanta.com)



INTERNATIONAL  
MARKET CENTERS





## Todd Breyer

### LANDSCAPE ARCHITECT

National award-winning registered landscape architect. Creating the region's most exquisite, individually tailored, custom grounds and gardens and neighborhoods since 1985. Any size or style made just for you. Private estates, Cheekwood Botanical Gardens, the Opryland Hotel, historic West Meade Mansion and Fairvue Plantation, Tennessee Tech University, and many more.

*Proudly Chairing All Gardens for the Antiques and Garden Show*

ToddBreyer@Bellsouth.net  
615.663.8558

Special Thanks to Gracie Studio for providing this year's garden inspiration and to all the sponsors for their support in helping to bring you magnificent gardens year after year.

GRACIE.  
FOUNDED 1898

SPONSORED BY

COOK BUILDERS

HARTLEY BOTANIC  
HANDMADE WITH PRIDE SINCE 1938



JLL®

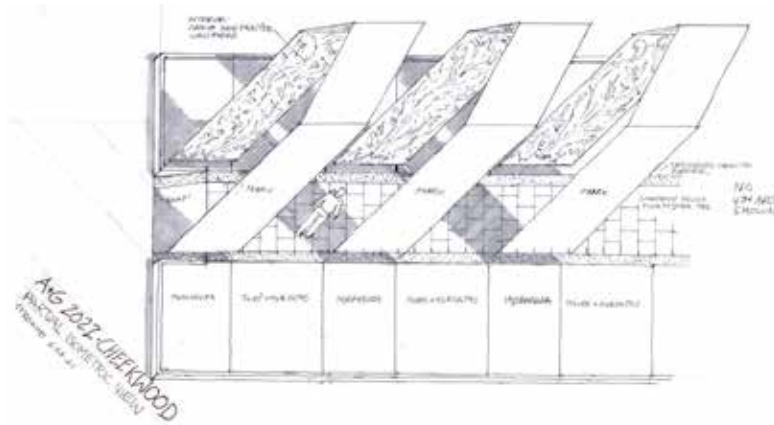
Louise B. Wallace  
Foundation

Louie M. & Betty M.  
Phillips Foundation

ROGERS  
NASHVILLE, TENNESSEE

# 2022 GARDEN DESIGNERS CHEEKWOOD ENTRY GARDEN

## *A Folly in Fabric*



Inspired by historic garden follies and fabric tents in the landscape, the entry garden presents a classical enfilade hallway showcasing richly adorned interiors. Four regularly spaced, triangular arches soar into the air to form a gallery of hand painted Gracie Wallpaper surrounded by exuberant plantings. The arches' interiors showcase the rich garden-inspired textures, colors, and patterns unique to Gracie's artistry.

## BROUGHT TO YOU COURTESY OF



Peter Grimaldi



Mary Weber

### CHEEKWOOD, GARDEN DESIGNERS

Team Cheekwood includes designer-in-residence Tres Fromme, principal at 3.Fromme DESIGN, Gale Higgs of Nashville Landscape Systems and SiteWorks, all of whom help Vice President Peter Grimaldi and Director of Horticulture Mary Weber steward the historic estate in Belle Meade.



### TRES FROMME

Tres Fromme is currently Cheekwood Estate and Gardens Designer in Residence where he collaborates closely with Staff on master planning, garden design, and seasonal displays, including Cheekwood Blooms and HOLIDAY Lights. He is also lead designer on the Bracken Foundation Children's Garden that opened in 2020.



### SITWORKS LLC

SiteWorks LLC, founded in 2002 as a small site construction firm, has developed over two decades into a diverse team of highly experienced construction professionals and craftsmen. With this collective technical and construction management expertise, SiteWorks continues to provide single source contracting services to the Nashville community.



Gale Higgs

### NASHVILLE LANDSCAPE SYSTEMS, INC.

Gale Higgs of Nashville Landscape Systems, Inc. has provided the full spectrum of landscape installation and maintenance services in Middle Tennessee since 1979. Gale's unmatched knowledge and experience serve a distinguished portfolio including several high-profile private estates, as well as Cheekwood.

SPECIAL THANKS ARE EXTENDED TO:  
COMMONWEALTH BLINDS AND SHADES, INC.



## 2022 GARDEN DESIGNERS

### EAST GARDEN

# *Whimsical Wonderland: A Tale of the Whispering Willows*



Once upon a time there was a garden of discovery, designed to bring out the sense of wonder in all who pass through. Journey through a willow portal into another world—one where your inner child reigns over this cozy cottage amongst ancient ruins, in an enchanted wood where willows whisper secrets to all with the courage to listen.

## BROUGHT TO YOU COURTESY OF



Anne Daigh



Wade Rick

### DAIGH RICK LANDSCAPE ARCHITECTS, GARDEN DESIGNER

We're storytellers and landscape architects. At first glance, those things may seem unrelated, but once you understand who we are and how we work, you'll see they're one and the same. We tell stories with every landscape we create. The stories we tell aren't ours, though. They're the stories of our clients—the homeowners, the property holders, the ones who'll live, work, play, and relax in the outdoor experiences we bring to life.

Anne wishes to thank the following contributors:

JOHN SKELLEY LIGHTING | JOHNNY WOOLSEY ART



West Cook

### COOK BUILDERS

West has been in the construction business for 20 years in the custom residential space. West is a native Nashvillian and is very active in the community. He graduated from Battle Ground Academy in Franklin. He then graduated from The University of Mississippi with a Bachelor of Science in Business Administration. After graduating and working for 10 years in the electronic payment industry, West earned a MBA at Vanderbilt's Owen Graduate School of Management.

Mr. Cook wishes to thank the following contributors who have supplied materials and services to construct the donated Playhouse.

WALKER LUMBER | ABOVE ALL ROOFING | VINTAGE MILLWORKS | NATCHEZ STONE



### NATURAL CREATIONS LLC

Natural Creations LLC was formed in 1998 by Matt Dawson and John Henderson. They specialize in unsurpassed landscape installation and implementation, as well as offer expert maintenance and a passion for providing the highest quality customer service.

SPECIAL THANKS TO:



HONESTY | INTEGRITY | EFFICIENCY | DEPENDABILITY



# COOK BUILDERS



[CookBuilders.org](http://CookBuilders.org)

Architect - Ron Farris | Photography - Adrienne Figueroa | Interiors - Alcott Interiors | Landscape - Kaiser Trabue



## 2022 GARDEN DESIGNERS

### WEST GARDEN

## *A Heritage Garden*



A Heritage Garden is an inspired collaboration between distinct multigenerational firms dedicated to horticulture, innovative design and artisanship. Altogether it represents over fifteen generations and nearly 400 years of experience and passion. With high regard for preserving tradition the space highlights the unique escape a thoughtfully designed garden provides. A seamless blending of horticulture, the built environment and decorative ornamentation all engage to transport visitors to a refined yet welcoming experience.

### BROUGHT TO YOU COURTESY OF



#### JOSEPH HILLENMEYER, GARDEN DESIGNER

For Joseph, a landscape design is an exploration; it's the culmination of his many passions—horticulture, fine arts, science, craftsmanship and design. Authenticity to place and architecture is essential in Joseph's approach to design; his landscapes translate the built environment to the natural world and connect people with the land. Creating gardens is a vocation for Joseph, not merely a profession—one that continually excites and inspires him.



#### HARTLEY BOTANIC

Hartley Botanic has a long and proud history of designing and manufacturing handmade glasshouses with pride since 1938 and has earned an unrivaled reputation for crafting the finest Glasshouses and Greenhouses money can buy. Providing a beautiful range of structures from classic to modern, and custom made designs, Hartley Botanic strives to cater to the needs of every individual. Each structure is individually designed to the specification of the customer and is built to last a lifetime.



#### NATURAL CREATIONS LLC

Natural Creations LLC was formed in 1998 by Matt Dawson and John Henderson. They specialize in unsurpassed landscape installation and implementation, as well as offer expert maintenance and a passion for providing the highest quality customer service.

#### SPECIAL THANKS TO:



HARTLEY  BOTANIC

HANDMADE WITH PRIDE SINCE 1938



VICTORIAN LODGE  
New York, USA

VISIT US IN THE WEST GARDEN TO FIND OUT MORE AND SEE OUR FABULOUS FLOWER SHOW OFFERS

Discover the secret of Hartley Botanic by calling 781 933 1993 or visit [www.hartley-botanic.com](http://www.hartley-botanic.com)



**HANDMADE IN ENGLAND, CHERISHED IN AMERICA**

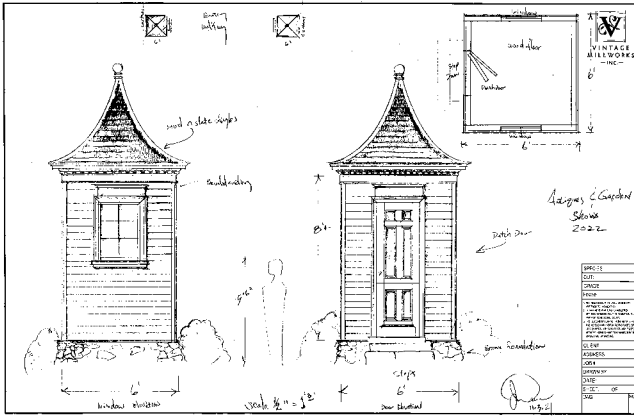
The only aluminium Glasshouses and Greenhouses endorsed by the RHS

® The Royal Horticultural Society. The Royal Horticultural Society, and its logo, are trade marks of The Royal Horticultural Society (Registered Charity No 222879/SC038262) and used under licence from RHS Enterprises Limited.



## 2022 GARDEN DESIGNERS SHOW ENTRANCE

### *Southern Estate Entry Garden Houses*



The inspiration design for the Estate Entry Garden houses is patterned after the brick garden structures found at Hidcote Manor Garden in the beautiful Cotswold English countryside. A large portion of the display structures are composed of repurposed or reclaimed materials.

## BROUGHT TO YOU COURTESY OF



### JAMES E. DUNN, FOUNDER OF VINTAGE MILLWORKS, INC.

In 1987, James founded Vintage Millworks, focusing the organization and team of craftsmen on design and fabrication of custom architectural millwork. Primary objectives were, and continue to be utilizing appropriate materials, techniques, application, proportion, and design.

Inspired by early childhood experiences on his Grandparents' farm in rural Michigan, his youthful vision of sustainable living would incorporate reclaimed old growth lumber from salvaged barns and house parts into new classical architectural millwork, cabinetry, and furniture.

As a craftsman, formally trained in crafting fine furniture, cabinetmaking and boatbuilding, James settled in middle Tennessee in 1975 to pursue his passion of becoming a self-supporting artisan. The love of classical architecture, beautiful landscapes, garden design and their effects on the human condition continue to inspire and guide his principles and his life's work.



WITH SPECIAL THANKS TO BUILDERS & INSTALLERS:  
FRY CLASSIC CONSTRUCTION | OSMANI DENIS & CREW



VINTAGE  
MILLWORKS  
— INC. —

Preserving the elegance of yesterday  
while building for tomorrow



contact: (615) 244-8044 | [vintage-millworks.com](http://vintage-millworks.com) | [sales@vintage-millworks.com](mailto:sales@vintage-millworks.com)



---

## 2022 DESIGNER OF SHOW

---

# Mary Spotswood Underwood *à la Bonne Femme*



### MARY SPOTSWOOD UNDERWOOD

The added florals and flourishes in the entranceway and special events are inspired by the beautiful Gracie handpainted papers displayed throughout the Show. The branches and blooms are pulled from the paper for a three-dimensional interpretation of the movement and beauty Gracie handpainted paper artfully depicts.

Mary Spotswood Underwood is the creator of *à la Bonne Femme*, a lifestyle company currently based in Nashville, Tennessee, that provides floral and culinary services for private homes and special events. She grew up among generations of gracious hostesses and is inspired by the history and tradition of hospitality in the home. Mary Spotswood also teaches classes in both cooking and floral design.



# THE BARRELS MAKE THE BOURBON *that's why* WE MAKE THE BARRELS



Crafting great bourbon starts with the barrel. Half of a whiskey's flavor and all of its color come from the barrel. At Coopers' Craft® we raise our own barrels by hand, then toast and char them to bring out the unique characteristics of our bourbons—because what matters most, we do ourselves.

**HONOR THE CRAFT. DRINK RESPONSIBLY.**

[COOPERSCRAFT.COM](http://COOPERSCRAFT.COM) | [RESPONSIBILITY.ORG](http://RESPONSIBILITY.ORG)

Coopers' Craft Kentucky Straight Bourbon Whiskey, 50% Alc. by Vol., Brown-Forman Beverages, Louisville, KY. COOPERS' CRAFT is a trademark of Brown-Forman Corporation. ©2019. All rights reserved.





SPECIAL EVENT

# Bourbon Party

FRIDAY, FEBRUARY 11TH | 6:30 – 9 PM

Southern Fare · Specially Crafted Bourbons

SPONSORED BY



BROWN-FORMAN



SPECIAL EVENT

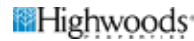
# Music in the Gardens

*featuring Craig Duncan*

SATURDAY, FEBRUARY 12TH | 3:30 – 5:30 PM

Music City means Music in the Gardens. Listen to talented musicians as you stroll and shop the Show floor.

SPONSORED BY



SARAH FLINT



changing lives

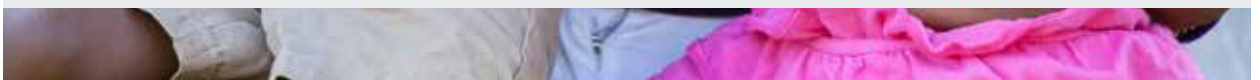
changing families

changing futures

To Volunteer or Donate:

visit us @ [familycentertn.org](http://familycentertn.org)

... breaking multigenerational cycles of childhood trauma  
... creating resilient communities where all children thrive



# 2022 SHOW ONLINE AUCTION



## Nashville Predators Jersey

Autographed Jersey by Roman  
Josi #59, valued at \$500.  
Minimum bid \$250.



## Nashville Predators Jersey

Autographed Jersey by Juuse  
Saros #74, valued at \$500.  
Minimum bid \$250.



## Nashville Predators Suite Night

Spend a night on the rink with friends  
cheering on Nashville's home team:  
The Preds! Watch from a private suite with  
16 friends. Minimum bid \$5,000.



## Tennessee Titans Suite

Down, Set, Hut! Gather 20 friends  
to cheer on the Tennessee Titans  
in style with a private suite.  
Includes; 20 Suite Tickets, 2 VIP  
Parking passes, Complimentary  
Food and Beverages.  
Minimum bid \$8000.



## Home Edit Package

Home Edit Gift Card \$100 and Package  
In Home Consultation with The Home Edit

A six-hour consultation with The Home Edit to tackle organizational projects.  
This package also includes \$100 to The Container Store. Clea Shearer and Joanna  
Teplin, the dynamic duo behind The Home Edit, are the authors of two New  
York Times' number one best-selling books, the stars of the Emmy-nominated  
Netflix series "Get Organized with The Home Edit".

\*Consult restricted to Nashville area homes only.



BID ONLINE AT  
[ANTIQUESANDGARDENSHOW.COM/AUCTION](https://ANTIQUESANDGARDENSHOW.COM/AUCTION)  
Bidding ends at noon CST Sunday, February 13th





ANNOUNCING

## VERANDA FIELD TRIPS

# Gardens of the Golden State

...

NOVEMBER 8-13, 2022

...

Join VERANDA for a backstage pass to California's bespoke gardens, mid-century architecture, local flavors, and natural beauty.

### *featuring*

Intimate visits to the enchanted gardens of Palm Springs, Pasadena, and Santa Barbara, including **Sunnylands** and **Lotusland**

A tour of the vibrant fabrics and expert craftsmanship at **Raoul Textiles**, followed by a private reception in the shop and garden

An exploration of **mid-century modern design** in Palm Springs to include a reception inside an iconic home, plus a private dinner atop the **Palm Springs Aerial Tramway**

A cooking demonstration and hosting tips from author **Frances Schultz** at her ranch in the **Santa Ynez Valley**

A sweet retreat to a **historic date plantation** in a desert oasis

...

### *Discover more unforgettable expeditions in 2022*

**PARISIAN DISCOVERIES** ♦ March 19-26

**THE GARDENS & HISTORY OF VIRGINIA** ♦ May 2-6

For more information, including pricing and detailed itineraries, visit [veranda.com/veranda-field-trips](https://veranda.com/veranda-field-trips) or call **855.890.5298\***.

**#VERANDAFIELDTRIP ♦ @VERANDAMAG**

*Space is limited. \*Third-party operator, Academic Travel Abroad.*



MATT WIER



# See Inside the South's Most Beautiful Homes

Interior Designer: Marcelle Guilbeau  
Photographer: Gieves Anderson

**SB** StyleBlueprint

BIRMINGHAM - LOUISVILLE - MEMPHIS - NASHVILLE - SOUTHERN EDITION



# The Heartbeat OF MUSIC CITY



**CAMBRIA®**  
Nashville Downtown

We are proud to sponsor The 2022 Antiques & Garden Show.

Right around the corner from Broadway's neon marquees, booming live music scene and iconic hotspots, **Cambria Hotel Nashville Downtown** embodies the real soul of country music. Blending boutique comfort with full-service amenities, top-notch hospitality, distinctly southern vibe and a little hint of edge, this is a Music City original for the modern traveler.

# Nashville Interiors



Proud Sponsor of the  
Antiques & Garden Show



MIDDLE TENNESSEE'S PREMIER  
INTERIOR DESIGN AND LIFESTYLE  
PUBLICATION SINCE 2000.

**NASHVILLE INTERIORS** SHOWCASES  
THE PEOPLE WHO INSPIRE IN THE  
SPACES THEY LIVE.





# ORCHIDS IN THE MANSION

**JANUARY 29 – FEBRUARY 27, 2022**

---

SPRAYS OF WHITE MOTH ORCHIDS

GIANT PALMS

CASCADING TROPICAL FOLIAGE

*Advanced reservations required at [cheekwood.org](https://cheekwood.org).*



# CHEEKWOOD IN BLOOM

**10<sup>TH</sup> ANNIVERSARY**

**250,000 BLOOMING BULBS**

---

**MARCH 12 - APRIL 10, 2022**

*Advanced reservations required at [cheekwood.org](https://cheekwood.org).*





Listed on the National Register of Historic Places and accredited by the American Alliance of Museums, Cheekwood is considered one of the finest American Country Place Era estates in the nation today. Once the family home of Mabel and Leslie Cheek, this extraordinary 1930s estate, with its historical mansion and 55 acres of cultivated gardens and expansive vistas, today serves the public as a botanic garden, historic home and art museum.

Visit this weekend to experience the sights, sounds, and sensations of a bygone era. Explore the Historic Mansion & Museum featuring period rooms and art galleries with three exhibitions currently on display including *Orchids in the Mansion*, *Valentine's Day Wedding Legacy*, and *The Wildly Weird World of Werner Wildner*.





# Experience the *beauty* of Cheekwood.

Discover Cheekwood through art and garden exhibits, programs, festivals and events.



From January 29 – February 27  
***Orchids in the Mansion*** activates the historic loggia with a lavish display that extends into the period rooms. In the drawing room, ***A Valentine's Day Wedding Legacy*** celebrates the 80th Wedding Anniversary of Huldah Cheek & Walter Sharp with an installation of Huldah's wedding dress.



There's no festival in Nashville more beautiful than ***Cheekwood In Bloom***. Celebrating its 10th Anniversary from March 12 to April 10, more than 250,000 blooming bulbs will spill from our gardens and create a color experience you won't forget.



Inspired by Cheekwood's historic landscape and architecture, the **Bracken Foundation Children's Garden** offers children an interactive outdoor experience focused on imaginative play to inspire interest in art and nature.



Cited as an enduring symbol of the friendship between Tennessee and Japan, the **Shōmu-en, Blevins Japanese Garden** has been called one of the most original Japanese Gardens in North America and features a bamboo forest.



The **Ann & Monroe Carell Jr. Family Sculpture Trail** features 11 permanent contemporary sculptures including works by Siah Armajani, Alicja Kwade and James Turrell among others along an approximate one-mile loop.





Sponsoring the Antiques & Garden Show of Nashville Since 1991

## Who We Are

The Economic Club of Nashville (ECON) provides a dynamic forum at weekly lunch meetings for business and community leaders to identify and discuss economic, social or political issues of special interest to Nashvillians. Members seek to interact with business leaders and government officials and support key nonprofit organizations that contribute to the quality of life in the Greater Nashville area.

## Where We Came From

ECON draws its history and tradition from the Exchange Club of Nashville. One of the largest clubs of the national organization, the Nashville Chapter was chartered on April 16, 1920, to support the national mission: "Exchange, America's Premier Service Club, working to make our communities better places to live." This mission resonates with members of the new club, which continues many of the existing initiatives.

## Moving Forward

Since 1991, ECON and Cheekwood have co-sponsored the annual Antiques & Garden Show of Nashville. ECON will continue in its support of The Family Center as well as provide generous support to many charities in Nashville. In 2014, ECON formed the Light A Spark program to provide opportunities for children and their families to participate in Nashville's cultural and arts programs. This show has become the Club's main fundraising activity, allowing ECON Charities, Inc., to contribute more than \$1.5 million to local charities.

## A History of Service

- ECON has been instrumental in helping make Nashville the great city that it is today. The list of achievements in its early years includes: • Widening Church Street west of the viaduct
- and the extension of Ninth Avenue from Church Street to Union Station, without cost to the city of Nashville;
- •The increase of parking facilities at Union Station;
- •The beautification of Memorial Park opposite the state Capitol;
- •The first overall street marking program in Nashville;
- •Building children's playgrounds at the Davidson County Tuberculosis Hospital; • Equipping the Vanderbilt band with its first uniforms;
- •Sponsoring the first successful fundraising campaign for the American Red Cross conducted in Nashville;
- •Providing support for the public
- development of Cheekwood in 1960, transforming the private residence into a public garden and art museum.

ECON Charities proudly supports The Family Center of Nashville and the ECON Charities' Cultural Assistance Program. ECON is a founding member of The Family Center and has been one of its largest individual supporters for more than 35 years. Today ECON Charities provides more in charitable giving each year than any other single group beyond government and individual donors. The Family Center's mission is to break multi-generational cycles of child abuse, neglect, & trauma by empowering parents to raise children who can then reach their highest potential. The ECON Charities' Cultural Assistance Program (CAP) makes it possible for lower-income families to attend cultural events and activities offered by selected arts organizations in Nashville. These grants cover the costs of tickets, transportation, child-care—anything that might deter families from experiencing arts programs together. It is one of the few like it in the country. Last year alone, more than 1200 family members attended 35 visual and performing arts programs across our city. Participating arts organizations include: Cheekwood; Country Music Hall of Fame and Museum; Frist Center for Visual Arts; Nashville Ballet; Nashville Children's Theatre; Nashville Opera; Nashville Symphony; Tennessee Performing Arts Center. To date, family partners have included: Oasis; Nashville After Zone Alliance; St. Luke's Community House and Harvest Hands.

LEARN MORE ABOUT ECON

**EconClubNashville.org**



**CROSSLIN**  
Do more. Be more.®

*Audit & Assurance*

*Tax Strategy & Compliance*

*CFO Services*

*Business Valuation*

*Litigation Support*

*Forensic Accounting*

*Healthcare Consulting*

*Outsourced Human Resources*

*Managed IT & Cybersecurity*

Everything we do can be summerized in Crosslin's tagline "Do More. Be More®" It highlights the commitment that the Crosslin team will do more, so our clients can in turn be more.



**Regional accounting, consulting, & information technology firm**



**Providing business solutions for 35 years**



**Strong in integrity & customer service**



**615.320.5500**

**[www.crosslinpc.com](http://www.crosslinpc.com)**





# *the* MAGAZINE *of* MUSIC CITY



Stay in the know.

*Celebrity features, homes, great neighborhoods, fashion,  
dining, contests, events, and much more!*

NASHVILLE  
LIFESTYLES

NASHVILLE LIFESTYLES  
weddings

NASHVILLE LIFESTYLES  
AT HOME

swig  
NASHVILLE

Visit [SHOP.NASHVILLELIFESTYLES.COM](https://shop.nashvilleglifestyles.com)



NASHVILLE  
LIFESTYLES  
*The podcast*



presented by

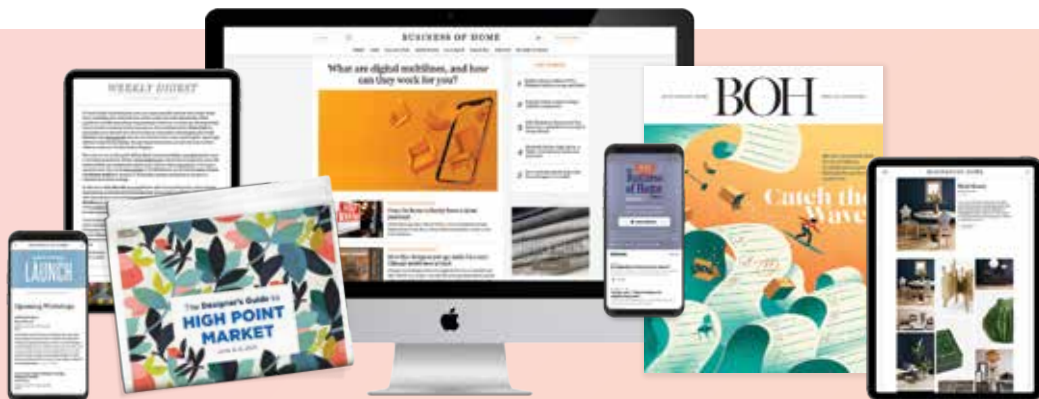
SOUNDWAVES  
PLAY GROUND OF THE CITY



Listen wherever  
podcasts are available.

GET IT ON  
Google Play

Download on the  
App Store



# KEEP UP WITH BUSINESS OF HOME

Essential insights to keep you competitive and connected

## NEWSLETTERS

All the news you don't want to miss, delivered to your inbox in daily and weekly formats.

[businessofhome.com/newsletter](https://businessofhome.com/newsletter)

## COLLECTIONS

A preview of the brands and product launches to know, plus a download on what's trending.

[businessofhome.com/collections](https://businessofhome.com/collections)

## PODCASTS

Explore the challenges facing the industry in interviews with designers, thought leaders and entrepreneurs.

[businessofhome.com/podcast](https://businessofhome.com/podcast)

## JOB BOARD

Find the job you want (and the people you want to hire) at the top destination for industry professionals.

[businessofhome.com/jobs](https://businessofhome.com/jobs)

## MAGAZINE

A quarterly in-depth analysis of the topics that matter most to the interior design community.

[businessofhome.com/subscribe](https://businessofhome.com/subscribe)

## WORKSHOPS

Brush up on best practices in these virtual business intensives with the industry's leading experts.

[businessofhome.com/workshops](https://businessofhome.com/workshops)

## MEMBERSHIP COMMUNITY

Join hundreds of BOH Insiders for access to experts, editors and members-only events, as well as discounts and partner perks.

[businessofhome.com/bohinsider](https://businessofhome.com/bohinsider)

## FUTURE OF HOME

A groundbreaking conference fostering conversation and connection about current industry challenges and future opportunities.

[futureofhome.com](https://futureofhome.com)

## JOIN THE CONVERSATION

[facebook.com/BOHBusinessOfHome](https://facebook.com/BOHBusinessOfHome)

[instagram.com/BusinessOfHome](https://instagram.com/BusinessOfHome)

[twitter.com/BusinessOfHome](https://twitter.com/BusinessOfHome)





FRESH. HOMEMADE. LOCAL.



SCAN FOR MENU

BREAKFAST. LUNCH. DINNER. PLUS AN ALL-NEW SALAD BAR!

*Stompin'*  
**Grounds**  
*restaurant*

SHOW YOUR ANTIQUES AND GARDEN SHOW TICKETS TO  
RECEIVE AN EXCLUSIVE **20% DISCOUNT** ON DINING!

Located across the street from Music City Center  
on 8th Avenue South inside JW Marriott Nashville.

Open daily at 6.30 am. Learn more at [JWMarriottNashvilleDining.com](https://www.jwmarriottnashvilledining.com).

Offer expires COB 02/13/2022. Discount applies to one table per day and excludes alcohol, tax, and gratuity.

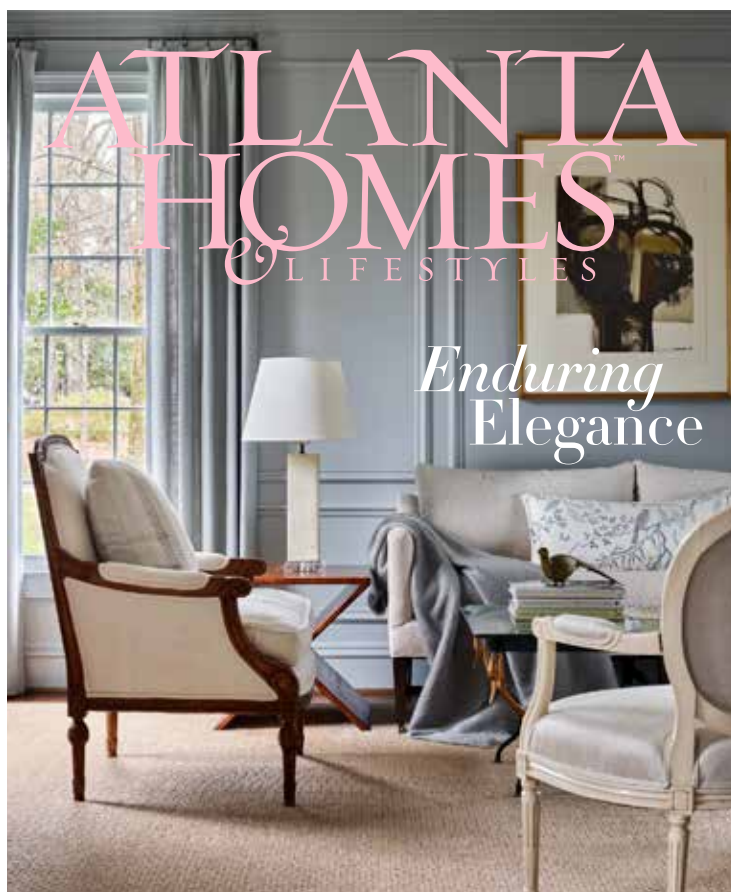


BROOKE'S BANK FARM

## CURATOR'S CHOICE

FINE WOOD POLISH

WWW.BROOKSBANKFARM.COM



# ATLANTA HOMES

& LIFESTYLES

*Enduring  
Elegance*

ON NEWSSTANDS  
*Now!*



atlantahomesmag.com



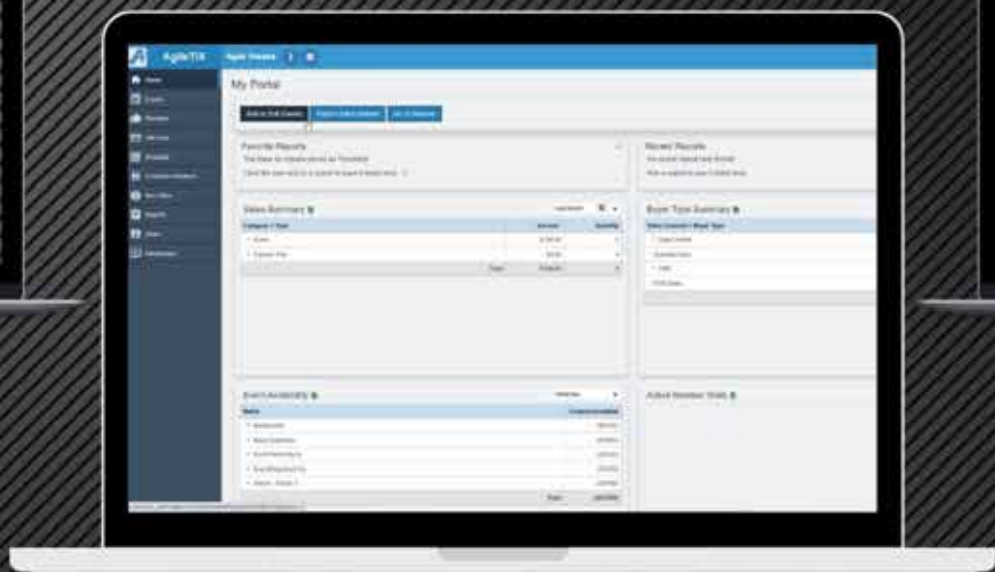
*Subscribe Today!*







Ticketing. Made Simple.



PROUD TICKETING SPONSOR OF

A&G



# Grow your brand.

A good brand speaks for itself. It connects with customer and stands out from the crowd. What does your brand say about you? Call us and we can work together to take your business to new heights.

STRATEGY  
BRANDING  
MARKETING  
PRINT  
DIGITAL



## CIRCA CREATIVE STUDIOS

Nashville · Kalamazoo · Greenville · NYC  
615.669.2460  
[circacreates.com](http://circacreates.com)



# ✿ EPERGNE ✿

Nashville's Destination for the Best in Home Accessories, Tabletop, and Gifts



# *n*FOCUS

**is a proud sponsor of the  
Antiques & Garden Show.**



**[www.nfocusmagazine.com](http://www.nfocusmagazine.com)**





For gardens, lifestyle  
and historic homes...

*Tennessee*  
CROSSROADS

*Volunteer*  
Gardener

**AR**  
ANTIQUES  
ROADSHOW

Nashville Public Television | [wnpt.org](http://wnpt.org)



## THE SCOUT GUIDE®

is proud to sponsor the 2022  
Antiques and Garden Show of Nashville  
thanks to our contributing TSG cities:

*Atlanta, Baton Rouge, Charlotte, Huntsville,  
Lexington, Memphis, Nashville & Franklin,  
Northwest Arkansas, and Richmond*

---

*To learn more about the The Scout Guide®,  
TSG guides to the locations listed above, and ways  
to discover and support local businesses, visit*

**THESCOUTGUIDE.COM**



# VOCK *and* VINTAGE

BOOTH  
H-40

*Vintage Aries Ring  
by Donald Claflin  
for Tiffany & Co.*

JEFF LITTRELL  
ANTIQUES

*with Donna Vock*

[www.vockandvintage.com](http://www.vockandvintage.com)

## FINE PORTRAITURE SINCE 1942

Portraits, Inc. represents  
today's foremost portrait artists,  
offering an extensive range of styles,  
mediums, and price points.

*"For those looking to have a portrait done,  
the most central resource is Portraits, Inc."*

*- The Wall Street Journal*

• PORTRAITS, INC. •

**Mary Daugherty Overstreet**

615 491 2115

MARY.S.OVERSTREET@GMAIL.COM

WWW.PORTRAITSINC.COM

*Portraits, Inc. is proud to support CASA.*



## Our Saturday Tastings - Nashville's Favorite Cup of Tea.

(Wines, spirits & more. Free.  
Saturdays 3-5 pm)



**The Wine Chap**  
wine & spirits

Hill Center, Belle Meade  
4322 Harding Road • (615) 386-0133  
[www.thewinechap.com](http://www.thewinechap.com)



**YOUR Williamson**  
A DISTINCTIVELY SOUTHERN PLACE

Robertson Media Group  
&

YOUR Williamson  
are proud to partner with

**A&G**

See coverage and more at:  
[yourwilliamson.com](http://yourwilliamson.com)





CHARLOTTE TERRELL

Fine Art and Custom Mural Wallcoverings



Original art created for custom mural wallcoverings by artist Charlotte Terrell

[www.charlotteterrell.com](http://www.charlotteterrell.com)



**March 4, 5, 6, 2022**

*Presented by*

**CHRISTOPHER & MICHAEL**

Kentucky Horse Park's  
Alltech Arena, Lexington, Kentucky



**Gala Preview Party**

Hosted by **Matt Carter & Brent Bruner**, Honorary Co-chairs



**Keynote Lecture by Christopher Spitzmiller**

*With his book, A Year at Clove Brook Farm*

**Cocktail & Quickfire Seminars**

*Lifestyle and entertaining panels with four speakers each day.*

**Complimentary Daily Lectures**

**Designer Vignettes**

**In its 36<sup>th</sup> year with over seventy dealers from across the country offering fine antiques, garden accessories, stunning jewelry, collectibles, silver and much, much more!**



The Blue Grass Trust for Historic Preservation

Visit [www.bluegrasstrust.org/antiques-and-garden-show](http://www.bluegrasstrust.org/antiques-and-garden-show)

859.253.0362

@bluegrasstrust



30  
YEARS  
1992-2022



CHRISTOPHER PEACOCK  
LUXURIOUS FITTED CABINETRY FOR EVERY ROOM

VISIT OUR SHOWROOM AT THE NASHVILLE DESIGN COLLECTIVE / 510 MERRITT AVENUE / SUITE 203 / NASHVILLE, TN / 615-908-0404  
PEACOCKHOME.COM @CHRISTOPHERPEACOCK





HOME FURNISHINGS ————— ART ————— OBJECTS OF CHARM

MARKETPLACE INTERIORS  
2225 BANDYWOOD DR  
NASHVILLE, TN 37215  
@MARKETPLACEINTERIORSNASHVILLE  
615.942.6055



# WELL WISHES

FOR THE 2022 ANTIQUES & GARDEN SHOW

- *Ben & Libby Page*





C U R R E Y  
& C O M P A N Y

[curreyandcompany.com](http://curreyandcompany.com)

Lighting | Furniture | Accessories

# Shaia Oriental Rugs of Williamsburg

Quality antique & new oriental rugs of distinction since 1973



ANTIQUES COUNCIL  
AN INTERNATIONAL ORGANIZATION OF ANTIQUES DEALERS

## *Rugs as Art*



1325 Jamestown Rd, Williamsburg, VA  
757.220.0400 [www.shaiarugs.com](http://www.shaiarugs.com)



## HILL CENTER

BELLE MEADE | BRENTWOOD | GREEN HILLS

GROWING WITH NASHVILLE SINCE 1895



H.G. HILL REALTY COMPANY IS A PROUD SPONSOR OF ANTIQUES & GARDEN SHOW NASHVILLE

[HILLCENTERGREENHILLS.COM](http://HILLCENTERGREENHILLS.COM) | [HGHILL.COM](http://HGHILL.COM) | [HILLCENTERBRENTWOOD.COM](http://HILLCENTERBRENTWOOD.COM)





WE MAKE IT  
HAPPEN...

...YOU MAKE IT  
HOME.

**SHEA GHERTNER**  
(615) 397-8218

**WHITNEY MUSSER**  
(615) 294-5887

**LYNN SAMUELS**  
(615) 300-4353

**FRIDRICH  
& CLARK**  
REALTY, LLC

FRIDRICHANDCLARK.COM

615-327-4800



THE MANNING

## *Resort Living at Home in Nashville*



### *Condominium Residences*

*Remaining Offerings begin at \$2.45 million - \$3.10 million  
by appointment*

At the intersection of elegance and exclusivity, you'll find the residences of The Manning, in Nashville's premiere, Belle Meade area. Enjoy Page Duke designed gardens, Christopher Peacock cabinets and spacious balconies with summer kitchens, in one of our 36 luxurious residences.

**LaRawn Rhea**  
615. 218. 4784

**Marsha Simoneaux**  
615. 585. 9509

**Beth Molteni**  
615. 566. 1610



**FRIDRICH & CLARK**  
REALTY, LLC  
615. 327. 4800





# Antiques & Garden Show Leadership

## 2021-2022 BOARD OF DIRECTORS

Mr. Bo Tyler  
*Chairman/President*

Mr. Chris Hilton  
*Treasurer*

---

### BOARD MEMBERS

Mrs. Sarah Bartholomew

Mrs. Debbie Best

Mrs. Nancy C. Deaton

Mr. Peter Grimaldi

Mrs. Jenna Muller

Mr. John Nail, Jr.

Mrs. Kathy Rolfe

Mr. Steve Sirls

Mrs. Janette S. Smith

Mr. Cameron Wells

Mr. Stephen Wells

---

### DIRECTORS EMERITUS

Mr. Stephen E. (Steve) Blackmon, Jr.

Mrs. Connie M. Cigarran

Mrs. Elizabeth Foss

## PAST CHAIRMEN & ADVISORY COMMITTEE

2020

Louise Bryan  
Ashley Levi

2005

Nancy Deaton  
Elizabeth Papel

2019

Martha Chapman  
Shea Ghertner

2004

Ann Buchanan  
Amy Colton

2018

Kim Holbrook  
Robin Puryear

2003

Karen Fleming  
Lucy Haynes

2017

Linda Graham  
Mary Smith

2002

Lou Ann Brown  
Marjorie Clements

2016

Elizabeth Coble  
Amy Liz Riddick

2001

Betsy Brittain  
Janette Smith

2015

Julie Fleming  
Kae Gallagher

2000

Mary Gambill  
Beth Moore

2014

Mindy Jacoway  
Vee Vee Scott

1999

Emily James  
Betsy Wills

2013

Dana Miller  
Birgitta Williamson

1998

Kate Ezell  
Jane Waterlow

2012

Sarah Bartholomew  
Debbie Best

1997

Kim Davis  
Lesley Green  
Anne Morgan

2011

Kathy Rolfe  
Betsy Wilt

1996

Elaine Sullivan  
Julie Walker

2010

Donna Dalton  
Carolyn Hannon

1995

Holly Bryant  
Jackie Hicks

2009

Tracy Frazier  
Mary Jo Shankle

1994

Libby Page  
Lynne Rhett

2008

Sandy Sangervasi  
Cathy Shell

1993

Jane Sloan  
Anne Whetsell

2007

Barbara Burns  
Julie Gordon

1992

Donna Kestner  
Peggy Kinnard

2006

Liz Harwell  
Julia Johnson

### 1991 FOUNDERS

Sigourney Cheek   Connie Cigarran



— 2022 NATIONAL —  
ADVISORY COMMITTEE

**Alexa Hampton**  
Mark Hampton LLC  
New York, New York  
markhampton.com

**Bobby McAlpine**  
McALPINE  
Atlanta, New York, Nashville, Montgomery  
mcalpinehouse.com

**Charlotte Moss**  
Charlotte Moss, LLC  
New York, New York  
charlottemoss.com



**Ben Page**  
Page-Landscape  
Nashville, Tennessee  
page-landscape.com

**Suzanne Rheinstein**  
Suzanne Rheinstein and Associates  
Los Angeles, California  
suzannerheinstein.com

**John Rosselli**  
John Rosselli & Associates  
New York, New York  
johnrosselli.com

**Gil Schafer**  
G. P. Schafer Architect  
New York, New York  
gpschafer.com

**Margot Shaw**  
*Flower Magazine*  
Birmingham, Alabama  
flowermag.com

**Remco van Vliet**  
Van Vliet & Trapp Event Design  
New York, New York  
vanvlietandtrap.com

**Bunny Williams**  
Bunny Williams Associates  
New York, New York  
bunnywilliams.com



# Museum Bees<sup>®</sup>

By  
Trace Mayer

MuseumBees.com





# 2022 COMMITTEE

## 2022 GENERAL CHAIRMEN

Ashley Smith  
Julia Spickard

## ANTIQUES

### CHAIRMAN

Janette Smith

## CHAIRMAN EMERITUS

Connie Cigarran

## COMMITTEE

Betsy Brittain  
Randy Farmer  
Tori Wimberly

## BENEFACTOR

### SOLICITATION LETTER

Peggy Kinnard  
Sandy Sangervasi

## BOURBON PARTY

### CHAIRS

Katie & Alex Hardy  
Caitlin Kelley  
Carly & Ian Symington  
Molly & Joey Viola  
Chip Wilkison

## HOSTS

Sarah Aughtman  
Clay Bowden  
Ann Ralls & Jared Brown  
Lindsey & Dylan Burroughs  
Callie & Reed Cook  
Francie & Tom Corcoran  
Caroline Corley  
Caitlin Costello  
Laura Draughn  
Jennifer & Tee Dzwonkowski  
Jake Estes  
Thomas Estes  
Maggie & Will Finn  
Leila Fuqua  
Robert Grenfell  
Drew Haynes  
Lauren & Jeremy Jeter  
Mary & Ryan Keith  
Millie & Daniel Lynch  
Courtney & John McLarty  
Emily & Clay Money  
Louise Paterson  
Kristin & Brett Pettit  
Mary Winston Reames  
Lexie Stewart &  
Stephen Richards  
Caroline & Jason Roberson  
Leslie Rolfe  
Janie & Robert Rolfe  
Kate Sangervasi  
Nick Scanlan  
MayMay & Jay Scott  
Jackson Siktberg  
Eleanor Smith  
Addison Smith

## BOURBON PARTY

### HOSTS CONTINUED

Sam Smith  
Laurie Spradley  
Justine Brittain & Curtis Vann  
Marianna Weaver  
David Best & John White  
Richard White  
Harry Woosley  
Katherine Woosley

## CAFÉ CHAIRMEN

Louise Bryan  
Paula Kinard

## CATALOG AD SALES

Emily Sangervasi

## COMMITTEE KICK OFF

### CHAIRMEN

Susan Burns  
Kathleen Estes  
Elizabeth Frist  
Leigh Reames  
Barby White

## CUSTOMER SERVICE

### MOVE-IN CHAIRMAN

Lynn Scarola  
Susan Weathersby

## MOVE-IN COMMITTEE

Liza Coleman  
Katie Gibson  
Cathy Grier  
Pamela Jackson  
Lee Oakley  
Betsy Peebles

## RUN OF SHOW CHAIRMEN

Bet Bruns  
Beth Kost

## RUN OF SHOW COMMITTEE

Kim Anderson  
Julie Brown  
Eileen Connelly  
Ashley Cook  
Caroline Cook  
Susan Dean  
Brittney Forrister  
Lara Green  
Kitsie Hayles  
Katie Johnson  
Heather Kemp  
Amanda Khouri  
Ashley Levi  
Meg Manning  
Monika McCurdy  
Monica Michalec  
Stephanie Pease  
Mary Pierce  
Laura Rouse  
Jamie Vaughan  
Kerry Wilson  
Laura Katherine Wood

## DESIGNER OF THE SHOW

### CHAIRMEN

Mary Spotswood Underwood

## COMMITTEE

Lisa Beasley  
Lynn Brown  
Susan Burns  
Kathleen Estes  
Brittney Forrister  
Carey Haynes  
Emily Hinkle  
Katie Johnson  
Laura Landstreet  
Kim McRae  
Britton Nielsen  
Felice Oldacre  
Carolyn Perrone  
Leigh Reames  
Cile Scanlan  
Kristin Taylor  
Jamie Watford

## EARLY SHOPPING

### CHAIRMEN

Eric Ross & Ruthann Ross

## GARDEN CHAIRMEN

Todd Breyer  
Martha Chapman  
Steve Sirls

## GENERAL COMMITTEE

Amy Adams  
Libba Alden  
Louise Alexander  
Constance Baker  
Holly Barnhart  
Shannon Beisel  
Michelle Bohannon  
Trisha Bridges  
Stefanie Carter  
Ansel Cline  
Caroline Cook  
Mary Craven Dawkins  
Barbie Draughn  
Mallory Dobbs  
Laurie Farris  
Sara Garner  
Mary Graf  
Kailey Hand  
Kitsie Hayles  
Carey Haynes  
Irene Head  
Rachel Herbert  
Caroline Hillard  
Helen Hopson  
Jody Hull  
Katie Johnson  
Julia Johnson  
Jay Joyner  
Amanda Khouri  
Vance McGuigan  
Dana Oman  
Blair Parkes  
Catherine Paterson

## GENERAL COMMITTEE CONTINUED

Lynne Smith  
Kathy Stumb  
Meg White  
Kerry Wilson  
Laura Katherine Wood

## GROUP SALES

Lucie Carroll  
Linda Graham

## HORTICULTURE

### CHAIRMEN

Nancy Deaton  
Ashley Stringfellow

## HOSPITALITY

Sarah Bartholomew  
Debbie Best  
Kae Gallagher  
Shea Gherntner  
Julie Gordon  
Robin Puryear  
Mary Smith  
Birgitta Williamson

## TRAVEL COORDINATOR

Martha Chapman

## INVITATIONS

### CALLIGRAPHY

Kathleen Petro

## PRINTING

Jay Joyner

## LECTURES

### AUDIO VISUAL

Brooke Trusley

## BOOK SIGNING CHAIRMEN

Whitney Schickling  
Heather Traylor  
Molly Virgin

## BOOK SIGNING COMMITTEE

Constance Baker  
Blythe Browne  
Irene Head  
Mary Catherine Healy  
Elizabeth McCrary  
Mary Orlando  
Charlotte Ward

## FAVOR COMMITTEE

Lorie Duke  
Dana Oman  
Meg White

## GREEN ROOM

Beth Preston  
Kristin Taylor

## 2022 COMMITTEE

### HOSTESS CHAIRMEN

Mary Gambill  
Elizabeth Papell  
Mary Jo Shankle

### HOSTESS COMMITTEE

Karin Adams  
Murray Clayton  
Karen Fleming  
Tracy Frazier  
Mary Glover  
Martha Hayworth  
Jackie Hicks  
Mindy Jacoway  
Lauren Jeter  
Arlene Johnson  
Gwyn Spencer

### LOGISTICS

Liz Green  
Lauren McCarthy

### RESERVED SEATING

Mary Smith

### TICKET MANAGEMENT

#### CHAIRMEN

Caroline Coulton  
Alexa Coulton  
Laura Bearden Newman

#### COMMITTEE

Nancy Brock  
Bette Christofersen  
Nancy Clark  
Leslie Collins  
Jane Coussoule  
Susan Pitts Dale  
Sarah Ann Ezell  
Linda Floyd  
Lucy Garrabrants  
Susan Gray  
Judi Hardy  
Nancy Harper  
Becky Hellerson  
Joyce Hitt  
Penny Hodgkin  
Annbern Holliman

### TICKET MANAGEMENT COMMITTEE CONTINUED

Jake Johnston  
Clayton Kelly  
Lael Kiesling  
Molly Lake  
Baily McCarthy  
Laurie McCarthy  
Kendra May  
Laura Niewold  
Jen Riven  
Jan Ruffin  
Jane Schapker  
Mary Schoettle  
Bunny Porter Shirley  
Lisa Smiley  
Stephanie Sproull  
Mandy Wachtler

### WELCOME COMMITTEE

Sarah Holstein  
Jessica Horne

### LIST MANAGEMENT CHAIRS

Melanie Baker  
Ann Buchanan  
Alice Whitson

### MAILINGS

Mary Byrd  
Sallie Swor

### MUSIC IN THE GARDENS

#### CHAIRMEN

Chris and John Grimes

### ONLINE AUCTION

#### CHAIRMAN

Kellie Robinson

### PHOTOGRAPHERS

Elizabeth Baker  
Warner Tidwell

### PREVIEW PARTY

#### CHAIRMEN

Allie & Edward Coble  
Kate & Neely Coble  
Sally & Neely Coble  
Jessica & Lee Woosley

#### HOSTS

Ruth & Craig Bailey  
Elizabeth & Charles Barrett  
Grace & John Bearden  
Lisa & Lyle Beasley  
Shannon & Mick Beisel  
Susan & Kent Burns  
Susan & Jay Davis  
Kathleen & Alec Estes  
Emily & Jeffrey Ezell  
AJ & Todd Falk  
Elizabeth & Bryan Frist  
Katie & Charles Gibson  
Amy & Will Greathouse  
Mimi & Conner Harris  
Eileen & Chris Hart  
Carey & David Haynes  
Lindsey & James Hundley  
Caylan & Anderson Jarman  
Julia & Bobby Johnson  
Melissa & Chris Johnston  
Sarah & Jeff Moats  
Blair & Davis Murfree  
Courtney & Jim Nantz  
Leigh & Brian Reames  
Rebecca & Grant Rutledge  
Cile & Pride Scanlan  
Leslie & Doug Sellers  
Callie & William Shell  
Caroline & Benson Sloan  
Lynne & Stuart Smith  
Margaret & John Thompson  
Elizabeth & Dave Wells  
Meg & Jody White  
Jeannette & Clay Whitson

### PREVIEW PARTY

#### RESERVATIONS

#### CHAIRMAN

Deborah Lovett

#### COMMITTEE

Mark Brown  
Melissa Clough  
Leisa Gill  
Joan Harris  
Sheryl Longin  
Mandy Lunn  
Tom Lunn  
Aimee Lurey  
Kyle Shults  
Wil Shults  
Madeleine Simon  
Anne Zadick

### SHOW BANK

Nancy Britt  
Bill DeCamp

### SHOW FLOOR

#### LOGISTICS

Dean Hitt

### SHOW OFFICE

Dana Miller  
Robin Puryear

### SOCIAL PRESS

Sylvia Bradbury

### TICKETING

Elizabeth Foss  
Marty McGinty  
Melody Quinn

Now celebrating our 32nd year, the Antiques & Garden Show has raised over \$8.5 million for Cheekwood and the Economic Club of Nashville (ECON) Charities.

Cheekwood is a 55-acre American Country Place Era estate featuring 12 distinct gardens, a woodland sculpture trail, an 8,000-piece permanent art collection, and 30,000-square-foot Mansion with historically furnished rooms and galleries. Over 225,000 visitors come to Cheekwood annually for year-round seasonal festivals, world-class art exhibitions, breathtaking gardens, and educational and public programs for all ages.

ECON Charities is a public charity established by the Economic Club of Nashville. ECON Charities partners with and distributes funds to organizations dedicated to enhancing and improving the lives of children and families in the greater Nashville area.

## ANTIQUES & GARDEN SHOW OF NASHVILLE MISSION

The Antiques & Garden Show of Nashville is an annual charity event whose purpose is to raise funds for Cheekwood and ECON Charities by exhibiting the highest quality antiques, landscaped gardens, and horticultural items and by offering a related educational outreach program.



# 2022 Show Supporters

## PLATINUM BENEFACTORS

Anonymous  
Alexander Interiors, Tori Alexander  
Teresa J. W. Bailey  
Melanie & David Baker  
Bunny & Mike Blackburn  
Bulley & Andrews  
Nancy & John Cheadle  
Connie & Tom Cigarran  
The Honorable & Mrs. Bob Corker



Kevin Corn  
Susan & Jonathan Dyke  
Mr. & Mrs. Rege Eisaman  
Field+Fort  
Fratt & Bush Home  
Lesley Green  
H.G. Hill Realty Company  
Ashley & Joe Howell  
Robin & Bill King

Lindley Martens Design  
Laurel Rd. Antiques & Modern  
Sarah & Jeff Lorberbaum  
Jennie & Rob McCabe  
Mr. & Mrs. Bond Oman  
Mr. & Mrs. James Stephen Payne  
REVIVAL HOME  
Mr. & Mrs. Robert O. Rolfe  
John Rosselli

Mr. & Mrs. Rivers Rutherford  
Mrs. Ashley B. Smith  
Mr. & Mrs. Justin Spickard  
Mary & Bill Stone  
Susan & E.W. Weathersby  
Barby & Govan White  
Jerry & Ernie Williams  
The Enchiridion Foundation

## GOLDEN BENEFACTORS

Anonymous  
Mr. & Mrs. Craig Andreen  
Apollo Art Services  
Ann Griffith Ash  
Jess & Joe Baker  
Helen Ballard  
Mr. & Mrs. Samuel Wilson Bartholomew III  
Sarah Beardsley  
Debbie & Buddy Best  
Mrs. Alton E. Blakley  
Mr. & Mrs. Douglas Guthrie Bradbury III  
Andrea Conte & Philip Bredesen  
Lou Ann & Gary Brown  
Martin Brown & Cathy Stewart Brown  
Louise & John Bryan  
Mr. & Mrs. Rick Bryant  
Bullock Interiors  
Stefanie & Blake Carter  
Mrs. Thomas H. Cato  
Sally & Neely Coble  
Mr. & Mrs. Spencer Coleman  
Mr. & Mrs. Britton Colquitt  
Mr. & Mrs. Evan Cope  
Emily Corker & Brandon Cannon  
Donna & Keith Crowe  
Mr. & Mrs. Kevin Crumbo  
Drs. Michael & Rowena Cuffe  
Mr. & Mrs. David K. Curtis  
Delphine & Allen Damon  
Nancy & Mark Deaton  
Laura Eason  
Mr. & Mrs. Chuck Elcan  
Eric Ross Interiors  
Ashley Evans  
Emily & Jeffrey Ezell  
Mr. & Mrs. Steven D. Ezell  
Randy Farmer & Michael Moore

Mr. & Mrs. Brendan Finucane, Jr.  
Mr. & Mrs. Richard H. Fitzgerald  
Peggy & Timber Floyd  
Mr. & Mrs. Randall Fojtasek  
Forager, A Modern Mercantile  
Tracy & Keith Frazier  
Mr. & Mrs. Bryan Frist  
Jennifer & Billy Frist  
Karyn McLaughlin Frist  
Dr. Thomas F. Frist, Jr.  
G. P. Schafer Architect  
Mr. & Mrs. Joel T. Galanter  
Kae & Tom Gallagher  
Shea & Doug Gherntner  
Mr. & Mrs. Steve Giannetti  
Bob Glaser/Miles Williams  
Mr. & Mrs. James Granberry  
Mr. & Mrs. William Greathouse  
Ms. Melissa Reynolds Grove  
Mrs. Natalie Hager  
Karen & Fred Hall  
Mr. & Mrs. JR Hand  
Nancy Hargove  
Mr. & Mrs. Jeffrey Hartman  
Cyrus Hatfield  
Mrs. Gary R. Haynes  
Lucy & Jeff Haynes  
Ashley & Jeff Heeren  
Mr. & Mrs. Eric T. Helman  
Mr. & Mrs. John S. Hicks  
Deb Hoban & Christy Gaughan  
Mrs. Evans Parnell Holland, Jr.  
Natalie Huffaker  
Inherited & Co., LLC  
Kathleen Janke  
Jett Thompson Home  
Thammanoune Kannalikhram

Valerie Karas & June Sims  
Harriet and Brad Karro  
Kitchens Unlimited  
Mr. & Mrs. L. Owen Kelly  
Fiona King  
Robin & Bill King  
Mr. & Mrs. Randall L. Kinnard  
Ms. Rebecca Klindt  
Janice & Randy LaGasse  
LEONTINE LINENS  
Robert S. Lipman Lipman Brothers, LLC  
Liza Bryan Interiors  
Susan Bozeman Designs  
Carter Kay Interiors  
LMC Design Group, Inc.  
Mr. & Mrs. Stephen Maher  
Ms. Majors & Ms. Hagood  
Mr. & Mrs. David L. Manning  
Melanie & Chris Marshall  
Dr. Clare Martinez  
Elizabeth & Mark McDonald  
Mr. & Mrs. James McDowell  
Mr. & Mrs. Donald McKenzie  
Marina McLeod  
Dr. Giacomo & Mrs. Monica Meeker  
Mr. & Mrs. George M. Miller II  
Ellen Livingfield More  
Linda & Rock Morphis  
Murray Khouri Interior Design  
Natchez Stone  
Nest Egg Auctions & Estate Sales,  
Ms. Amanda Davis  
Mark O'Bryan & Monty Smith  
Mr. & Mrs. William A. Oldacre  
Elizabeth & Larry Papel  
Paris Building Supply  
Lauren Patten

Mr. & Mrs. Mark C. Poe  
Ms. Pauline Astrum Pons  
Mr. & Mrs. T.J. & Amy Rauls  
Olivia & Mark Rechter  
Mr. & Mrs. Scofield-Robbins  
Kellie & Will Robinson  
Dara Russell & Anne Russell  
Mr. & Mrs. John J. Sangervasi  
Schatten Foundation  
Leslie & Douglas Sellers  
Shue's Gallery  
Mr. & Mrs. Christopher Simonsen  
Steve Sirls & Allen DeCuyper  
Nina & Tom Sisk  
Mr. & Mrs. James W. Spradley, Jr.  
Chris & Clay Staley  
Catherine Stutzner & Dr. James N. Johnson  
Teresa Manns Design  
The Iron Gate  
Mr. & Mrs. David Thompson  
Val & Darrell Schirmer, Three Toads Farm  
Trilling Landscape & Design  
Mr. & Mrs. Will Tucker  
Christi & Jay Turner  
Amy & Steve Van Andel  
Barbara Voss  
Veronica Votypka & Russell McLean  
Mrs. Jane Walker  
Elizabeth Oakley Waller  
Christine & Jeff Weller  
Lindsay & Cameron Wells  
Ms. Kimberly Wilkerson  
Wolfe Design House  
Mr. & Mrs. Joseph Woody  
Mr. & Mrs. H. Lee Woosley III  
Cathy Dougherty & Paula Yarbrough  
Thomas Gorman & William Zwecker

## BENEFACTORS

Anonymous  
Ami Austin Interior Design  
Lindsey Axel  
Ms. Kelley S. Beaman  
Mr. & Mrs. Lyle Beasley  
Ms. Peaches Gunter Blank  
Trisha Bridges  
Mary & Hank Brockman  
Mr. & Mrs. George S. Brooks II  
Kathryn & David Brown  
Mr. & Mrs. Cory Brown  
Elizabeth (Bet) and John Bruns  
Ann & Frank Bumstead  
Mr. & Mrs. Gregory L. Burns  
Mr. & Mrs. Kent Burns  
Susan & Damon Byrd  
C.S. Harrop Architects  
Amanda Church  
Katherine & Chris Cigarran  
Mr. & Mrs. Edward Coble  
Mr. & Mrs. Donald Q. Cochran  
Mr. & Mrs. West Cook  
William P. Cooper III  
Mr. & Mrs. Albert J. Dale III  
Donna Dalton

John H. Dinkins  
Donna Gilliam Interiors  
Ms. Robin Dumas  
Mr. & Mrs. Alec T. Estes  
Karen & Gene Fleming  
Regan Forrester  
Mrs. Elizabeth Foss & Mr. Bill Riner  
French By Design Antiques  
Mr. & Mrs. Thomas F. Frist III  
Jennifer & Charles Gay V  
Julie & Bob Gordon  
Mr. & Mrs. R. Newell Graham  
Kate & Kerry Hage  
Mr. & Mrs. Conner Harris  
Mr. & Mrs. Russell Harwell  
Mr. & Mrs. William H. Hawkins  
Joanne Hayes  
Michelle Haynes & Richard Reese  
Mr. & Mrs. Chip Hickerson  
Dr. & Mrs. Graf Hilgenhurst  
Mr. & Mrs. C. Hinnant  
Dr. Alice Hinton  
Mr. & Mrs. John A. Howard III  
Brian Jackson & Roger Moore  
Emily & Wynne James

Jan Barboglio Collection  
Mr. & Mrs. Anderson L. Jarman  
Kristen Nix Interiors  
Karen Laborde  
Jackie Lenox  
Leslie Littlejohn  
Lynde Easterlin Design  
Margaret Ash Design  
Mr. & Mrs. Neil May  
Mr. & Mrs. Doug McDowell  
Mr. & Mrs. Crispin Menefee  
Julia & John Morris  
Mr. & Mrs. David H. Mullendore  
Jenna & Ryan Muller  
Mr. & Mrs. Davis Murfree  
Melissa Murray  
Mr. & Mrs. John D. Nail, Jr.  
Laura & Charlie Niewold  
NivenBreen Communications  
Debbie O'Brien & David Porras  
Mr. & Mrs. Benjamin G. Page, Jr.  
Angèle Parlange  
Nick Ory Pride  
Mr. & Mrs. H. Moore Rhett III  
Elizabeth Rice  
Memree & Rich Roberts

Mr. & Mrs. Jeff Roberts  
Mr. & Mrs. Seamus Ross  
Molly E. Ryan  
Mr. & Mrs. Kent Salvesson  
Lynn & Ron Samuels  
Dr. & Mrs. Timothy P. Schoettle  
Mr. & Mrs. Charles Sell  
Mary Jo & Steve Shankle  
Dr. Brian M. Sirman &  
Mr. Thiago de Carvalho Régo  
Patti & Brian Smallwood  
Janette & Andy Smith  
Mr. & Mrs. Jim Smith  
Katie & Tom Steele  
Kristin & Don Taylor  
Mr. & Mrs. Marshall Taylor  
Pat Kerr Tigrett  
Brooke & Josh Trusley  
Mr. & Mrs. Jamie Tucker  
Mr. & Mrs. James F. Turner, Jr.  
Amy Murray Weekley  
Dr. & Mrs. William Whetsell, Jr.  
Dudley Morgan White  
Jeannette & Clay Whitson  
Joyce & Rod Wilson  
Marion Yager



## PATRONS

Anonymous  
Steve Ainsworth  
Louise & Will Alexander  
Dru Anderson  
Kerry Ankenbrandt  
Annali Interiors  
Clare Armistead  
Mr. & Mrs. Craig Bailey  
Mr. & Mrs. John Bearden, Jr.  
Mr. & Mrs. Mick Beisel  
Mrs. Annie Tipps Bell  
Mr. David Best & Mr. John White  
Mr. & Mrs. Robert Boston  
Ann & Til Bourland  
Mr. & Mrs. Stephen Braun  
Mrs. Scott C. Brittain  
Allison & Phil Brooks  
Dr. & Mrs. Benjamin F. Byrd III  
Mr. & Mrs. Jason Callen  
Mr. & Mrs. Clay Caroland III  
Will T. Cheek  
Ms. Grace Clayton & Ms. Marie Young  
Mr. & Mrs. John F. Cline  
Mr. & Mrs. Neely Coble IV  
Amy & Overton Colton

Mr. & Mrs. Charles W. Cook, Jr.  
Nancy B. Cooke  
Dana Goodman Interiors  
Joe Daubel  
Mr. & Mrs. Jay Davis  
Development Support Group  
Cindy & Baird Dixon  
Michael S. Dixon  
Mr. & Mrs. Matthew Dobson V  
Dr. & Mrs. Frank Drummond  
Duke Design Group  
Brooke & Walker Eastham  
Engel & Völkers  
Essex Home Designs LLC  
Beth Fabel & Jordan Shumate  
Mr. & Mrs. Ron D. Farris  
Mr. & Mrs. Brendan Finucane  
Mr. & Mrs. W. Harrison Frist, Jr.  
Mary & Tom Gambill  
Carolyn & Hartley Hall  
Ms. Jenny Hannon  
Clark & Tom Harwell  
Judy & Sandy Haury  
Mr. & Mrs. Drew Healy  
Claudia Heath

Ms. Leigh R. Hendry & Mr. Bo Roberts  
Mr. & Mrs. Teddy Hillard  
Kim & Jimmy Holbrook  
Mr. & Mrs. Tom Hooper  
Edie & David Johnson  
Mr. & Mrs. Robert Evans Johnson  
Donna Kestner  
Shelton & Drew Kitchen  
Mrs. Julie Kremin  
Dr. & Mrs. John W. Lea IV  
Dr. & Mrs. MacRae F. Linton  
Kim & Robert Looney  
Jane & Don MacLeod  
Mr. & Mrs. Hill McAlister  
Mr. & Mrs. Kevin McGuigan  
Judy & Mickey McLellan  
Beth & Paul Moore  
Anne & Walter Morgan  
Katherine D. Murfree  
Mr. & Mrs. Wes Pass  
Mr. & Mrs. Scott Paterson  
Ms. Kimberly Patikas  
Mr. & Mrs. Harry W. Peffen III  
Jane Anne & Dale Pilkinton  
Robin & David Puryear

Mr. & Mrs. Michael D. Regan  
The Honorable Emily J. Reynolds  
Mr. & Mrs. J. Allen Reynolds III  
Mr. & Mrs. Stephen Rick  
Mr. & Mrs. H. Pride Scanlan  
Mr. & Mrs. Frederic Scarola  
Mr. & Mrs. Chris Schickling  
Dr. & Mrs. William A. Shell, Jr.  
Dr. Mark Slagle & Mr. Kyle Bailey  
Jane B. Smith  
Dr. Jamie Street & Richard Butler  
Debra & David Taylor  
Reverend & Mrs. Tim Taylor  
Mr. & Mrs. John Thompson  
Transparent Atelier  
Tucker & Marks  
Margaret & Bo Tyler  
Dr. & Mrs. Frank Virgin  
Nicky Weaver  
Wellborn Real Estate  
Elizabeth & Dave Wells  
Mr. & Mrs. W. Ridley Wills III  
Mary & Paul Wilson  
Laura Katherine Wood  
Dr. & Mrs. W. Bradley Worthington  
Mary Brette & Cook Wylly

## CONTRIBUTORS

Anonymous  
Mr. & Mrs. T. Clark Akers  
Sally Bradshaw  
Nancy B. Cooke

Dr. Mary Maitland DeLand  
Mr. & Mrs. Stanley Graham in  
Honor of Ashley Smith  
Mary Belle Grande

Mr. & Mrs. Britt Groomes  
Rachel & Erik Herbert  
Mr. & Mrs. Joseph G. Miller  
Minch Foundation

Kathy & Michael Shears  
Mrs. Caroline Stevens  
Mrs. Karen M. Sweeney  
Anne & Jim Tate



# THE SWEETEST NASHVILLE EXPERIENCE

*Goo Goo Chocolate Class*

**GOO GOO**  
CHOCOLATE CO.

116 3RD AVE S, NASHVILLE  
GOOGOO.COM



# Special Thanks

To all our committee members, advisory committee and board members, especially those who have volunteered for countless years, we thank you!

To our families for their constant support and encouragement, thank you:

*Eleanor and Addison Smith • Justin, Field and Thompson Spickard.*

## FINALLY, WE WOULD LIKE TO EXTEND A SPECIAL THANKS TO THE FOLLOWING:

Amy & Kenneth Adams	Elizabeth & Bryan Frist	Owen Kelly	Derek Schartung
Grace Anzelmo	Elizabeth Foss	Jerry Kemp	Steve Sirls
Sarah Bartholomew	Emily Hill	Rebecca King	Heather Snover
Liz Brittain Beck	Jamé Fowler	Beth Kost	Janette Smith
Debbie Best	Framed! Anne	Christine Kozuch, <i>Circa Creative Studios</i>	Mary Smith
Steve Blackmon	Carmody-Sheeler	Laura Landstreet	Stradley Davidson
Todd Breyer	G & G Interiors	Deborah Lovett	Linen Collective
Nancy Britt	Kae Gallagher	Jane MacLeod	Ashley Stringfellow
Bet Bruns	Julie Gordon	Debbie Mathews, Antiques and Design	Melinda Swann
Peter Bucci	Mike Gracie	Vicki & Kerry McCluggage	Melody Tang, Circa
Andrew Byrd	Jenn Gracie	Kellie Robinson	The Callaway
Lucie Carroll	Peter Grimaldi	Marty McGinty	The Cambria
Laura Chadwick	Katie Grubbs	Dana Miller	The Dotted Line
Martha Chapman	Jeanine Hackett	Jenna Muller	The Tulip Tree
Connie Cigarran	Ray Hayles	John Nail, Jr.	The Wine Chap
West Cook	Hermitage Hotel	Dana Oman	The Westin
Anne Daigh	Joseph Hillenmeyer	Louise Paterson	Brooke Trusley
Bill DeCamp	Chris Hilton	Kathleen Petro	Bo Tyler
Allen DeCuyper	Dean Hitt & Michael Boyd	Robin Puryear	Mary Spotswood Underwood
Beth DeGrandis	Peyton Hoge	Melody Quinn	Richard Wagner
Laura Deleot, <i>Circa Creative Studios</i>	Kim Holbrook	Tim Rockett	Brady Wardlaw
Nancy Deaton	Kim Hugo	Kathy Rolfe	Susan Weathersby
Lori Duke	Import Flowers	Fresca Rose	Mary Weber
James Dunn	Jackson Durham	Ruthann & Eric Ross	Addison Weeks
Vintage Millworks	Mike Jackson	Aubrey Ryman	Cameron Wells
ECON Volunteers	Diane Johnson	Emily Sangervasi	Stephen Wells
Ashley Fischetti	Jay Joyner, <i>Joyner Hogan</i>	Lynn Scarola	Meg White
Sarah Flint	Juliska		Birgitta Williamson
	JW Marriott		Tori Wimberly

## A VERY SPECIAL THANK YOU TO SHANNON SHEARS,

Antiques & Garden Show of Nashville Event Coordinator  
and the driving force behind the 2021 & 2022 Shows.

*Thank you, Shannon, for always making the Show the success that it is!*

*Thank you to Melody Quinn for all your hard work and assisting the Chairs, Shannon and the Board.*

## AN EXTRA SPECIAL THANK YOU TO OUR OUTSTANDING MARKETING & CREATIVE TEAM

Melody Tang, Christine Kozuch, Simon McNeil, *Circa Creative Studios*  
Liz Beck, Meghan McNeer, *The Callaway*

FOR UPDATES:

[ANTIQUESANDGARDENSHOW.COM](https://www.AntiquesandGardenShow.com)





**RARE CONNECTICUT QUEEN ANNE STEPPED CORNICE HIGH CHEST**  
probably Woodbury, Connecticut, 1760-1780.

Having a two case construction with unusual stepped cornice, fan and shell carved drawers, cabriole legs with pad feet, dovetailed and rosehead nail construction.

Original bat wing brasses and escutcheons.

Height: 81¼" x 40" x 21"

# 2020–2021 Virtual Giving Campaign

## Show Supporters



MILIEU

FLOWER  
HOUSE GARDEN LIFESTYLE

VERANDA

We cannot begin to express how grateful we were to have the support of so many during the global pandemic. Your gifts allowed us to continue to support our beneficiaries, dealers, vendors, industry leaders and to provide virtual educational design programming to our friends across the country. Your support also enabled us to plan appropriately during these challenging times so that the Show can continue the legacy of supporting Cheekwood and ECON Charities.

### GOLDEN BENEFACTORS

Ann Griffith Ash  
Mr. & Mrs. Samuel Wilson Bartholomew III  
Debbie & Buddy Best  
Mrs. Alton E. Blakley, Jr.  
Lou Ann & Gary Brown  
Louise & John Bryan  
C.M. Leonard Antiques  
Connie & Tom Cigarran

Nancy & Mark Deaton  
Cindy & Baird Dixon  
Eric Ross Interiors  
Mrs. Elizabeth Foss & Mr. Bill Riner  
Mr. & Mrs. Thomas F. Frist III  
Mr. & Mrs. Douglas Ghertner  
Lesley Green  
Mr. & Mrs. Eric T. Helman

Neil Krugman & Lee Pratt  
Janice & Randy LaGasse  
Jennie & Rob McCabe  
Kellie & Will Robinson  
Mr. & Mrs. Donald McKenzie  
Linda & Rock Morphis  
Elizabeth & Larry Papel  
Deborah & Keith Pitts

Please Be Seated  
Ms. Pauline Astrum Pons  
Mr. & Mrs. Gustavus A. Puryear IV  
Mr. & Mrs. Robert O. Rolfe  
Sandy & Jay Sangervasi  
Mr. & Mrs. Christopher Simonsen  
Mr. & Mrs. Justin Spickard  
Jerry & Ernie Williams

### BENEFACTORS

Julia & Gareth Aden  
Mr. & Mrs. Michael W. Blackburn  
Cathy & Martin Brown  
Ann & Frank Bumstead  
Mr. & Mrs. Gregory L. Burns

Donna Dalton  
EBS Foundation  
Karyn McLaughlin Frist  
Joanne Hayes  
Mr. & Mrs. John S. Hicks  
Stephanie & John Ingram

Lillias & Will Johnston  
Vicki & Kerry McCluggage  
Tricia & Doug McDowell  
Mr. & Mrs. Ben Page, Jr.  
Mary Jo & Steve Shankle  
Steve Sirls & Allen DeCuyper

Mrs. Ashley B. Smith  
Mr. & Mrs. Donald Taylor  
Margaret & Bo Tyler  
Mrs. John Warner White

### PATRONS

Clare Armistead  
Barbara & Jack Bovender  
Martha & Wes Chapman  
Mr. & Mrs. James H. Cheek III  
Will T. Cheek  
Mr. & Mrs. Robert T. Coleman  
Amy & Overton Colton  
Mr. & Mrs. Charles W. Cook, Jr.

Dr. & Mrs. John C. Dalton  
Mr. & Mrs. Steven D. Ezell  
Karen & Gene Fleming  
Mr. & Mrs. Keith D. Frazier  
Elizabeth & Bryan Frist  
Kae & Tom Gallagher  
Mary & Tom Gambill  
Barbara & Greg Hagood  
Clark & Tom Harwell

Mr. & Mrs. Jeffery N. Haynes  
Mr. & Mrs. Mark Humphreys  
Mr. & Mrs. James V. Hunt, Sr.  
Sarah & David Ingram  
Mr. & Mrs. Clay T. Jackson  
Emily & Wynne James  
Dr. & Mrs. John W. Lea IV  
Beth & Paul Moore  
Callie & Sinclair Myers

Dr. & Mrs. William A. Shell, Jr.  
Mr. & Mrs. Brian S. Smallwood  
Janette & Andy Smith  
Mr. & Mrs. Thomas R. Steele  
Mr. & Mrs. David K. Taylor  
Dr. & Mrs. William Whetsell, Jr.  
Sissy & Bill Wilson

### CONTRIBUTORS

Anonymous  
Suzanne Allen  
Kreis Beall  
Mr. & Mrs. James L. Beckner  
Betty Bellamy  
Mary Margaret & Peter Bourbeau  
Anita Bradley  
Mr. & Mrs. John P. Campbell III  
Nancy & John Cheadle  
Mrs. Faye Jewell Chiles  
Katherine & Chris Cigarran  
Jane & Bill Coble  
Elizabeth & Les Coble  
John W. Cullum  
Dr. Beverly Davenport

Michael S. Dixon  
Mr. & Mrs. John P. Donnelly  
Jo & Ben Doubleday  
Vicky & Lucas Elliot  
Engel & Voelkers Nashville  
Sallie Ennis  
Mr. & Mrs. Ron D. Farris  
Mr. & Mrs. Brendan Finucane, Jr.  
Cindy & David Franklin  
Jenny Gaston  
Julie & Bob Gordon  
Ms. Jenny Hannon  
Debbie Hillard  
Dean Hitt & Michael Boyd  
Dr. & Mrs. James T. Holbrook  
Brenda Kelly

Paula & Bob Kinard  
Peggy & Randy Kinnard  
Kristy Cohn Design  
Bethany & William Kroemer  
Dr. & Mrs. MacRae F. Linton  
Kim Harvey Looney  
Sue & Michael Minch  
Brian Jackson & Roger Moore  
Anne & Walter Morgan  
Jackie O'Dowd  
Ms. Judith Parsons  
Pretty Pots & Paths  
Robin Puryear  
Robin Rains  
Mr. & Mrs. Michael D. Regan  
Emmie & Stephen Rick

Ed & Rhonda Rose  
Lynn & Ron Samuels  
Ketch Secor  
Kathy & Michael Shears  
Moylan/Smelkinson-The Spare Room Antiques  
Mr. & Mrs. James W. Spradley, Jr.  
Mrs. Karen M. Sweeney  
Mr. and Mrs. James S. Tate, Jr.  
Ms. Blan Ventress  
Mrs. Tom D. Walker  
Stephen Wells  
Mrs. David M. Wilds  
Betsy & Ridley Wills III  
Laura Katherine Wood



WILLIAM STAMPS FARISH FUND



Louise B. Wallace  
Foundation



ConservCapital



# HORTICULTURE DEALERS

A List Antiques H-56  
Cashiers, NC  
850-974-4562

Allen Lowman H-29  
Kansas City, MO  
816-294-5904

Artist Collective H-06  
Charleston, Atlanta,  
Nashville, Capital  
artistcollectives.org

Atlanta Planters H-38  
Atlanta, GA  
atlantaplanters.net

Avec Moi H-43  
Franklin, TN  
avecmoifranklin.com

Ben & Lael, Inc. H-35  
Nashville, TN  
benandlael.com

Benton, Hayden H-51  
& Associates  
Atlanta, GA  
bentonhaydenantiques.com

Bockhorst Antiques H-46  
Loveland, OH  
513-919-9775

Building Number 9 H-27  
Nashville, TN  
bldgno9.com

Charleston Gardenworks H-50  
Charleston, SC  
charlestongardenworks.com

Charlotte Terrell H-16  
Fine Art & Custom Mural  
Wallcovering  
Nashville, TN  
charlotteterrell.com

Cheekwood Gift Shop H-33  
Nashville, TN  
cheekwood.org

Cottage Garden H-04  
Franklin, TN  
615-841-3551

Creekside Garden H-59  
Center  
Nashville, TN  
creekside106.com

Cuckoo's Nest H-02  
Atlanta, GA  
404-550-6228

David A. Zabriskie H-48  
Lake Placid, NY  
518-524-9967

DinnerpARTy H-53  
Carmel, IN  
@dinnerpartyantiques

Ed Nash Fine Art H-49  
Nashville, TN  
ednashart.com

Elephant Walk H-54  
Round Top, TX  
elephantwalkantiques.com

Elliott & Elliott H-18  
Art & Antiques  
Harbor Springs, MI  
elliott-elliott.com

Eneby Home H-24  
Nashville, TN  
enebyhome.com

Gum Tree Farm H-39  
Designs  
Middleburg, VA  
gumtreefarmdesigns.com

Harvesting History H-09  
Greene, NY  
harvesting-history.com

Hastening Design Studio H-31  
Middleburg, VA  
hasteningdesigns.com

Holland Macrae H-42  
Atlanta, GA  
hollandmacrae.com

Jalan Jalan H-17  
Nashville/ Bali  
jalanjalanantiques.com

Jeff Littrell Antiques H-40  
Santa Fe, NM  
jefflittrellantiques.com

Julie Harris H-11  
Kansas City, MO  
julieharrisllc.com

Kathy Tobler Silver H-45  
Granbury, TX  
kathytobler.com

Kimball & Bean Garden H-30  
Woodstock, IL  
kimballandbean.com

La Cigale H-36  
Mt. Gretna, PA  
lacigale-usa.com

Laval Antiques H-41  
Atlanta, GA  
plaval.com

Luisana Designs H-10  
and Antiques  
Greensboro, NC  
hpadc.com

M. Fowler Antiques H-57  
Destin, FL  
mfowlerantiques.com

Madison James H-13  
New York, NY  
madisonjames.com

Maison30A H-01  
Morning Glory Art & Design  
Panama City Beach, FL  
maison30a.com

Manos De Sur H-08  
Atlanta, GA  
manosdesur.com

Mario Pollo H-05  
Holliston, MA  
mariopollo.com

Marta Gualda Artifacts H-12  
Spain/Charlotte, NC  
martagualda.com

Moss Studios, Inc. H-28  
Fowlerville, MI  
mossstudios.com

Nashville Rug Gallery H-26  
Nashville, TN  
nashvilleruggallery.com

Outdoor Lighting H-15  
Perspectives  
Nashville, TN  
outdoorlights.com

Peony's Envy H-44  
Bernardsville, NJ  
peonysenvy.com

Peridot Antiques H-47  
Savannah, GA  
912-596-1117

Provenance Antiques H-23  
Atlanta, GA  
provenanceantiquesatlanta.com

Really Good H-52  
Boynton Beach, FL  
404-456-3536  
Reed Smythe & Co. H-19  
Nashville, TN  
@reedsmytheco

Restoration Rose H-14  
Memphis, TN  
restorationrose.com

Roberts Antiques H-58  
Homer, MI  
407-342-6804

Scarlett Scales H-03  
Antiques  
Franklin, TN  
scarlettscales.com

Selective Gardener H-34  
Catalog  
Brentwood, TN  
selectivegardener.com

Stony Lonesome H-21  
Spring Hill, TN  
stonylonesome.com

The Compleat Flea H-25  
Atlanta, GA  
thecompleatflea.com

The Side Door H-22  
Cashiers, NC  
843-290-2687

VEdesigns H-07  
San Antonio, TX  
vedesigns.net

Wild Pearl H-32  
Pawley's Island, SC  
wildpearl.com

X-Treme Products H-37  
Sevierville, TN  
865-548-6392

# ANTIQUE DEALERS

Alcott Interiors A-01  
Nashville, TN  
alcottinteriors.com

Anthony Scornavacco A-64  
St. Paul, MN  
anthonyscornavacco.com

Artifacts A-03  
Atlanta, GA  
atlantaantiquescollective.com

B. Viz Design A-51  
New Orleans, LA  
rebeccavizard.com

Barometer Fair A-37  
Sarasota, FL  
barometerfair.com

Brocante, LLC A-48  
Lake Charles, LA  
brocantefrenchantiques.com

C. M. Leonard Antiques A-42  
South Salem, NY  
914-763-8032

Camilla Dietz A-54B  
Bergeron, Ltd  
New York, NY  
cdbltd.com

Creekside Antiques A-56  
Alpharetta, GA  
404-403-3455

Dalton Bain A-02  
Philadelphia, PA  
daltonbain.com

Dana Kelly A-33  
Oriental Rugs  
Lexington, KY  
danakellyrugs.com

Dinan & Chighine A-53  
Fine Art  
London, England  
dinanandchighine.com

Don Fields Craig A-49  
Ringstad Antiques  
Fairway, KS  
612-743-5753

Earle D. Vandekar A-13  
of Knightsbridge, Inc.  
Downingtown, PA  
vandekar.com

Edwin C. Skinner A-28  
Fairhope, AL  
251-929-7975

Embellish Antiques A-66  
Chapel Hill, NC  
embellishantiques.com

Finnegan Gallery A-11  
Chicago, IL  
finnegangallery.com

Foreign Affair A-39  
Roswell, GA  
foreignaffairintl.com

French Bleu A-70  
Atlanta, GA  
404-626-4418

George Getlik Fine Art A-45  
Atlanta, GA  
georgegetlikfineart.com

H.H. Walker and Company A-68  
Waynesville, NC  
hhwalkerandcompany.net

Hedgerow Antiques A-20  
Alpharetta, GA  
hedgerowantiques.com

James Sansum Fine A-67  
and Decorative Art  
New York, NY  
jamesansum.com

Jayne Thompson A-22  
Antiques & Design  
Harrodsburg, KY  
jaynethompsonantiques.com

Jeff R. Bridgman A-07  
Antiques Inc.  
Dillsburg, PA  
717-502-1281

Jesse Davis A-26  
London, U.K.  
jessedavisantiques.co.uk

Justin Westbrook Antiques A-69  
Richmond, VA  
justinwestbrookantiques.com

Kelleher Fine Art A-36  
Turlock, CA  
kelleherfineart.com

Kenny Ball Antiques A-36B  
Charlottesville, VA  
kennyballantiques.com

Kentshire Galleries A-38  
New York, NY  
kentshire.com

Kevin L. Perry, Inc. A-59  
Camden, SC  
941-504-5765

Kim Faison Antiques A-62  
Richmond, VA  
kimfaisonantiques.com

Kristy Cohn Design A-18B  
Nashville, New York  
kristykohn.com

Lina's Interiors A-15  
Leland, MS  
662-332-7226

Lotz's Antiques A-50  
St. Louis, MO  
lotzantiques.com

Mayfair A-23  
Tampa, FL  
mayfairantiquedealers.com

Mcdonough Fine Art A-63  
Atlanta, GA  
mcdonoughfineart.com

Michael Hall Antiques A-40  
and Fine Art  
Nashville, TN  
michaelhallantiques.com

Munday & Munday Antiques A-52  
Province, IL  
www.mundayantiques.com

Olivier Fleury, Inc. A-61  
Winter Park, FL  
ofleury.com

Patricia Marie A-0  
Fine Jewelry  
Nashville, TN  
patriciamariefinejewelry.com

Roberto Freitas A-34  
American Antiques  
& Decorative Art  
Stonington, CT  
robertofreitas.com

Roger D. Winter Ltd A-46  
Bucks County, PA  
rogerwinterantiques.com

Schorr & Dobinsky A-16  
Reading, PA  
schorranddobinsky.com

Shaia Oriental Rugs A-54  
Williamsburg, VA  
shaiaorugrugs757.com

Sheridan Loyd A-41  
Antiques & Decorative Arts  
Saint Joseph, MO  
sheridanloyd.com

Sherwood Antiques A-58  
Opelika, AL  
sherwoodantiques.com

Somerset Antiques A-05  
Leesburg, VA  
703-777-9379

Stanford Fine Art A-65  
Nashville, TN  
stanfordfineart.com

The Silk Purse Inc. A-17  
Atlanta, GA  
atlantaantiquescollective.com

The Silver Vault A-47  
Woodstock, IL  
815-337-3990

The Spare Room A-27  
Baltimore, MD  
spareroomantiques.com

Thistlewaite Americana A-35  
Middleburg, VA  
thistleamericana.com

Thomas M. Fortner A-44  
Antiques  
Memphis, TN  
901-452-3207

Trace Mayer Antiques A-57  
Louisville, KY  
tracemayer.com

Tucker Payne Antiques A-18  
Charleston, SC  
tuckerpayneantiques.com

Tutto dal Mondo A-12  
Philadelphia, PA  
tuttadalmondo.com

TwoMaisons A-06  
Colorado / France  
twomaisons.com

Village Antiques A-21  
and Interiors, Inc.  
Asheville, NC  
villageantiquesonline.com

Village Braider A-31  
Plymouth, MA  
villagebraider.com

Whitehall Antiques A-43  
Chapel Hill, NC  
whitehallantiques.com

Withington & Company A-29  
Portsmouth, NH  
603-498-4778

Yew Tree House A-24  
New York, NY  
yewtreehouseantiques.com

<b>A-0</b> Patricia Marie Fine Jewelry	<b>A-01</b> Alcott Interiors	<b>A-02</b> Dalton Bain	<b>A-03</b> Artifacts
--	---------------------------------	----------------------------	--------------------------

<b>A-03</b> Artifacts	<b>A-05</b> Somerset Antiques	<b>A-06</b> TwoMaisons
--------------------------	----------------------------------	---------------------------



**Entry Garden**  
**CHEEKWOOD**

**THE SCOUT GUIDE**  
**LOUNGE**

<b>A-13</b>	<b>A-12</b> Tutto dal Mondo	<b>A-11</b> Finnegan Gallery
<b>Earle D. Vandekar</b> of Knightsbridge, Inc.		<b>A-15</b> Lina's Interiors

<b>A-18</b> Tucker Payne Antiques	<b>A-18B</b> Kristy Cohn Design	<b>A-17</b> The Silk Purse Inc.	<b>A-16</b> Schorr & Dobinsky
<b>A-19</b> Hedgerow Antiques/ Laurie Ward		<b>A-21</b> Village Antiques and Interiors, INC.	

<b>A-24</b>	<b>A-23</b> Mayfair Designs	<b>A-22</b> Jayne Thompson Antiques & Design
Yew Tree House		

<b>A-28</b> Edwin C. Skinner	<b>A-27</b> The Spare Room	<b>A-26</b> Jesse Davis
<b>A-29</b> Withington and Company		<b>A-31</b> Village Braider, INC.

<b>A-35</b> Thistlethwaite Americana	<b>A-34</b> Roberto Freitas American Antiques & Decorative Art	<b>A-33</b> Dana Kelly Oriental Rugs
<b>A-36</b> Kelleher Fine Art	<b>A-36B</b> Kenny Ball Antiques	<b>A-37</b> Barometer Fair

<b>A-67</b> James Sansum Fine and Decorative Art
<b>A-66</b> Embellish Antiques
<b>A-65</b> Stanford Fine Art
<b>A-64</b> Anthony Scornavacco
<b>A-63</b> Mcdonough Fine Art
<b>A-62</b> Kim Faison Antiques

<b>A-57</b> Trace Mayer Antiques
<b>A-58</b> Sherwood Antiques
<b>A-56</b> Creekside Antiques
<b>A-54</b> Shaia Oriental Rugs
<b>A-54B</b> Camilla Dietz Bergeron, Ltd
<b>A-53</b> Dinan & Chighine Fine Art
<b>A-59</b> Kevin L. Perry, Inc.
<b>A-52</b> Munday & Munday Antiques
<b>A-61</b> Olivier Fleury, Inc.
<b>A-51</b> B. Viz Design

<b>A-43</b> Whitehall Antiques
<b>A-42</b> C. M. Leonard Antiques
<b>A-44</b> Thomas M. Fortner Antiques
<b>A-41</b> Sheridan Loyd Antiques & Decorative Arts
<b>A-45</b> George Getlik Fine Art
<b>A-40</b> Michael Hall Antiques and Fine Art
<b>A-46</b> Roger D. Winter Ltd
<b>A-39</b> Foreign Affair
<b>A-38</b> Kentshire Galleries
<b>A-47</b> The Silver Vault

**NORTH**

<b>JACKSON DURHAM LOUNGE</b>	<b>A-50</b> Lotz's Antiques	<b>A-49</b> Don Fields Craig Ringstad Antiques	<b>A-48</b> Brocante, LLC
<b>BAR</b>			

<b>A-68</b> H.H. Walker and Company	<b>A-69</b> Justin Westbrook Antiques
--	--

<b>A-70</b> French Bleu	<b>H-59</b> Creekside Garden Center
----------------------------	--



A-07 Jeff R. Bridgman Antiques Inc.	H-13 Madison James	H-12 Marta Gualda Artifacts	H-11 Julie Harris Antiques	H-10 Luisana Designs and Antiques	H-09 Harvesting History LLC	H-08 Manos De Sur	SHIPPING
---	--------------------------	-----------------------------------	-------------------------------------	--	-----------------------------------	-------------------------	----------

H-18 Elliott & Elliott Art & Antiques	H-17  Jalan Jalan	H-16 Charlotte Terrell	H-15 Outdoor Lighting Perspectives	H-14 Restoration Rose
			H-19 Reed Smythe & Co.	H-20



H-07 VEdesigns
H-06 The Artist Collective
H-05 Mario Pollo
H-04 Cottage Garden

H-24 Eneby Home	H-23 Provenance Antiques	H-22 The Side Door	H-21 Stony Lonesome
	H-25 The Compleat Flea	H-26 Nashville Rug Gallery	

H-31 Hastening Design Studio	H-30 Kimball & Bean Garden	H-29 Allen Lowman	H-28 Moss Studios, Inc.	H-27 Building No. 9
	H-32 Wild Pearl	H-33 Cheekwood Gift Shop	H-34 Selective Gardener Catalog	



H-40 Jeff Littrell Antiques	H-39 Gum Tree Farm Designs	H-38 Atlanta Planters	H-37 X-Treme Products	H-36 La Cigale	H-35 Ben & Lael, Inc.
	H-41 Laval Antiques	H-42 Holland Macrae	H-43 Avec Moi		

H-03 Scarlett Scales Antiques
H-02 Cuckoo's Nest
H-01 Maison30a Morning Glory Art & Design

H-49 Ed Nash Fine Art	H-48 David A. Zabriskie	H-47 Peridot Antiques	H-46 Bockhorst Antiques	H-45 Kathy Tobler Silver	H-44 Peony's Envy
	H-50 Charleston Gardenworks	H-51 Benton, Hayden & Associates	H-52 Really Good	H-53 Dinnerparty	

H-58 Roberts Antiques	H-57 M. Fowler Antiques	H-56 A List Antiques	H-54 Elephant Walk
-----------------------------	-------------------------------	----------------------------	-----------------------



SOUTH



# TW Capital is proud to be the Founding Sponsor of the Antiques and Garden Show of Nashville.

TW Capital is a Nashville-based  
private equity investment firm seeking  
to acquire and grow established, profitable,  
niche manufacturing companies in  
the United States.



3100 West End Avenue, Suite 500  
Nashville, Tennessee 37203  
(615) 256-8061 • [twvcapital.com](http://twvcapital.com)