

A&G

WELCOME
to

Beautiful



34TH ANNUAL
Antiques & Garden Show
of Nashville



The Reflecting Pool at Cheekwood.
Courtesy of Cheekwood Estate & Gardens.

Proud sponsors. Because we know a good investment when we see one.

Northern Trust is proud to serve as Presenting Sponsor of the 2024 Antiques & Garden Show of Nashville benefiting Cheekwood Estate & Gardens and ECON Charities. For more than 130 years, we've been meeting our clients' financial needs while nurturing a culture of caring and a commitment to invest in the communities we serve. Because great returns can come from anywhere.

FOR MORE INFORMATION CONTACT

John Fumagalli, President
Wealth Management, Central Region
jdf1@ntrs.com
305 789 1393

northerntrust.com/nashville



**NORTHERN
TRUST**



A&G

WELCOME
to
Beautiful



JANUARY 12-14, 2024 | MUSIC CITY CENTER
NASHVILLE, TENNESSEE

| | | | |
|---|----|--|----|
| SHOW SCHEDULE | 5 | DESIGN PANEL | 24 |
| WELCOME FROM PRESENTING SPONSOR | 6 | <i>Chic Couples on Creating Beautiful Collections</i> Stacey Bewkes with Jesse Carrier and Mara Miller of Carrier and Company and Meredith and Hunter Ellis of JAMES Showroom | |
| WELCOME FROM FOUNDING SPONSOR | 7 | 2024 GARDENS | 29 |
| WELCOME FROM THE SHOW CHAIRS | 8 | ECON | 36 |
| 2024 HONORARY CHAIR Bunny Williams | 9 | CHEEKWOOD | 40 |
| KEYNOTE LECTURE | 17 | SHOW LEADERSHIP | 68 |
| <i>The Perfect Recipe for a Beautiful Life</i> Ina Garten and Mary Celeste Beall | | NATIONAL COMMITTEE | 69 |
| LIFESTYLE DESIGN LECTURE | 21 | 2024 SHOW SUPPORTERS | 72 |
| <i>A Parisian's Guide to Celebrating the Good Life</i> Ajiri Aki | | 2024 COMMITTEE | 76 |
| FLORAL DESIGN LECTURE & DEMONSTRATION | 23 | SPECIAL THANKS | 79 |
| <i>The Artistry of Flowers</i> Gabriela Salazar - La Musa de las Flores | | LETTER FROM THE CHAIRMAN OF THE BOARD | 93 |
| | | HORTICULTURE DEALERS | 94 |
| | | ANTIQUES DEALERS | 95 |
| | | SHOW FLOOR MAP | 96 |

2024 Antiques & Garden Show of Nashville

P.O. BOX 50950, NASHVILLE, TN 37205 • (615) 352-1282
ANTIQUESANDGARDENSHOW.COM | #AGS2023

DESIGN INSPIRATION: HEREND QUEEN VICTORIA

THANK YOU TO OUR SPONSORS

PRESENTING SPONSOR

Northern Trust

FOUNDING SPONSOR

TVV Capital

LEGACY SPONSORS

Hartley Botanic
Pinnacle Financial Partners

CURATING SPONSOR

Scout Guide

PARTNER SPONSORS

ADAC
Brown-Forman
Corcoran Reverie
Crosslin
ECON Club
Vicki & Kerry McCluggage
William Stamps Farish Fund

COLLECTORS SPONSORS

Brasfield & Gorrie General Contractors
Bulley & Andrews/RockCity
Allen DeCuyper – Parks Realty
Gen Cap America
H.G. Hill Realty Company
Louise Bullard Wallace Foundation
Publix Super Markets Charities

CONTRIBUTING SPONSORS

Daffodilly Design, LLC
Debbie Mathews Antiques & Designs
Evans Petree
Highwoods Properties
Host & Toast Luxury Concierge
Louie M. and Betty M. Phillips Foundation
Nashville Design Collective
Oxford Shop
Rogers Manufacturing
Truist Bank

DESIGN INSPIRATION

Herend Queen Victoria

PREVIEW PARTY SPONSORS

Nfocus
VERANDA

BOURBON PARTY SPONSOR

Nashville Lifestyles

FIRST LOOK SPONSORS

Atlanta Homes & Lifestyles
Currey & Company

KEYNOTE LECTURE SPONSOR

MILIEU

LIFESTYLE-DESIGN LECTURE SPONSOR

Luxe Interiors + Design

FLORAL DESIGN LECTURE & DEMONSTRATION SPONSOR

FLOWER

DESIGN PANEL SPONSOR

F. Schumacher & Co.

OFFICIAL TICKETING SPONSOR

Tickets Nashville

HOTEL SPONSORS

JW Marriott Nashville
The Westin Nashville

CORPORATE FRIENDS

Corzine & Co.
Import Flowers
Joyner & Hogan Printers
Lipman Brothers
MCA (Mobile Communications America)
Tulip Tree

BOOK SPONSOR

Books-A-Million

NATIONAL MEDIA SPONSORS

American Fine Art Magazine | F. Schumacher & Co. | FLOWER
Luxe Interiors + Design | MILIEU | The Magazine ANTIQUES | VERANDA

MEDIA SPONSORS

Atlanta Homes & Lifestyles | Belle Meade Lifestyle | Blackbird Media | Brentwood Lifestyle
Clear Channel Outdoor Airports Division | Franklin Lifestyle | Hamilton County Herald | Lamar
Magnolia & Moonshine | Maury County Living | Music City Lifestyle | Nashville Convention & Visitors Corporation
Nashville Interiors | Nashville Lifestyles | Nashville Public Television | Nfocus | Sophisticated Living Nashville
Stroll Belle Meade | StyleBlueprint | TN Ledger | Williamson County Living | YOUR Williamson



SHOW SCHEDULE

Thursday, January 11

6:30 - 9 PM
PREVIEW PARTY

Friday, January 12

9 AM - 6 PM | SHOW HOURS

12 - 1 PM

KEYNOTE LECTURE:

The Perfect Recipe for a Beautiful Life

A special conversation with Ina Garten and Mary Celeste Beall

2 - 3 PM

LIFESTYLE-DESIGN LECTURE:

A Parisian's Guide to Celebrating the Good Life

Embracing joie with Ajiri Aki

3 - 4 PM | BOOK SIGNING:

Joie: A Parisian's Guide to Celebrating the Good Life

Ajiri Aki

6:30 - 9 PM

THE BOURBON PARTY

Center Garden

Saturday, January 13

9 AM - 6 PM | SHOW HOURS

11 AM - 12 PM

FLORAL DESIGN LECTURE & DEMONSTRATION:

The Artistry of Flowers

A floral design lecture and demonstration by La Musa de Las Flores

12 - 1 PM | BOOK SIGNING:

The Artistry of Flowers

Gabriela Salazar, La Musa de Las Flores

2 - 3 PM

DESIGN PANEL:

Chic Couples on Creating Beautiful Collections

A panel discussion led by Stacey Bewkes with Jesse Carrier and Mara Miller of Carrier and Company and Meredith and Hunter Ellis of JAMES Showroom

3 - 4 PM | BOOK SIGNING:

Defining Chic

Jesse Carrier and Mara Miller

3:30 - 5:30 PM

MUSIC IN THE GARDENS

Center Garden

Sunday, January 14

11 AM - 4 PM | SHOW HOURS

Sunday Shopping in the Garden

Coffee, bloody marys, pastries and snacks available for purchase while you browse.

ALL LECTURES ARE HELD IN THE DAVIDSON BALLROOM

BOOK SIGNINGS TO FOLLOW LECTURES IN THE BALLROOM LOBBY

Preview Party held on the Show Floor, Bourbon Party and Music in the Gardens held at Center Bar/Garden Area

SERVICES AVAILABLE DURING SHOW HOURS:

Shipping, food & beverage, and coffee are available. Hours may vary. Refer to the map on the inside back cover and signs throughout the Show for locations and hours. Visit customer service in the lobby with questions.

JOIN US FOR THESE SPECIAL EVENTS

Preview Party

THURSDAY, JANUARY 11

6:30 - 9 PM

The spectacular opening night kickoff gala is one of the most anticipated events of the year.

Join us for previewing and shopping the Show early with a stylish, sell-out crowd from all over the country.

Bourbon Party

FRIDAY, JANUARY 12

6:30 - 9 PM

The Friday night Bourbon Party blends a mix of Southern fare, specially crafted bourbons and live music on the show floor. Dress "Nashville cocktail-casual," bring friends and sip the night away while you shop the largest, most unique collection of antiques and garden accoutrements in the country.

Music — IN THE — Gardens

SATURDAY, JANUARY 13

3:30 - 5:30 PM

Music City means Music in the Gardens. Listen to talented musicians as you stroll and shop the Show floor.



Welcome to Nashville!

The board of directors of the 2024 Antiques & Garden Show of Nashville extends a special thanks to our Presenting Sponsor, Northern Trust, and our Founding Sponsor, TVV Capital, and our many additional corporate sponsors and individual supporters of the Show. We are grateful for over 400 volunteers who truly make the Show possible, especially our General Chairmen, Caroline Cook and Susan Weathersby.

PRESENTING SPONSOR

John Fumagalli, Northern Trust



Northern Trust is honored to be the Presenting Sponsor of the Antiques & Garden Show of Nashville for the second consecutive year, and we are delighted to welcome you to the 2024 edition of this spectacular annual event. Whether you are a visitor, collector, gardener or one of the many individuals who are instrumental in producing this Show, we sincerely hope you share our appreciation for the growth and evolution of this great Nashville tradition – which is now in its 34th year.

We have proudly served many of Tennessee’s most successful families for more than 30 years, earning their trust by providing them with both outstanding service and advice. Our work here also includes the same commitment we have made to all of our communities across the globe for more than 130 years: meeting our clients’ financial needs, nurturing a culture of caring and a promise to invest resources locally.

As we begin a new calendar year, our commitment to both arts and culture in our local communities is greater than ever. We are thrilled that the proceeds from this year’s Show will benefit a pair of truly remarkable organizations: Cheekwood Estate & Gardens and ECON Charities. Thank you for joining us, and we look forward to seeing you throughout the weekend.

John Fumagalli
President
Wealth Management, Central Region
Northern Trust



NORTHERN TRUST

FOUNDING SPONSOR

Andrew Byrd, TVV Capital



Later, when the Antiques show merged into the Antiques & Garden Show of Nashville, I headed Logistics for the first 1991 Show at the Nashville Convention Center. I have supported the Show ever since. As a result, more than a million dollars has been given by the Economic Club Charities to dozens of social service organizations across our city, bettering many people's lives. We are honored to sponsor this Show, bringing beauty, education and service to our community, while helping to build a beautiful city for all to be proud!

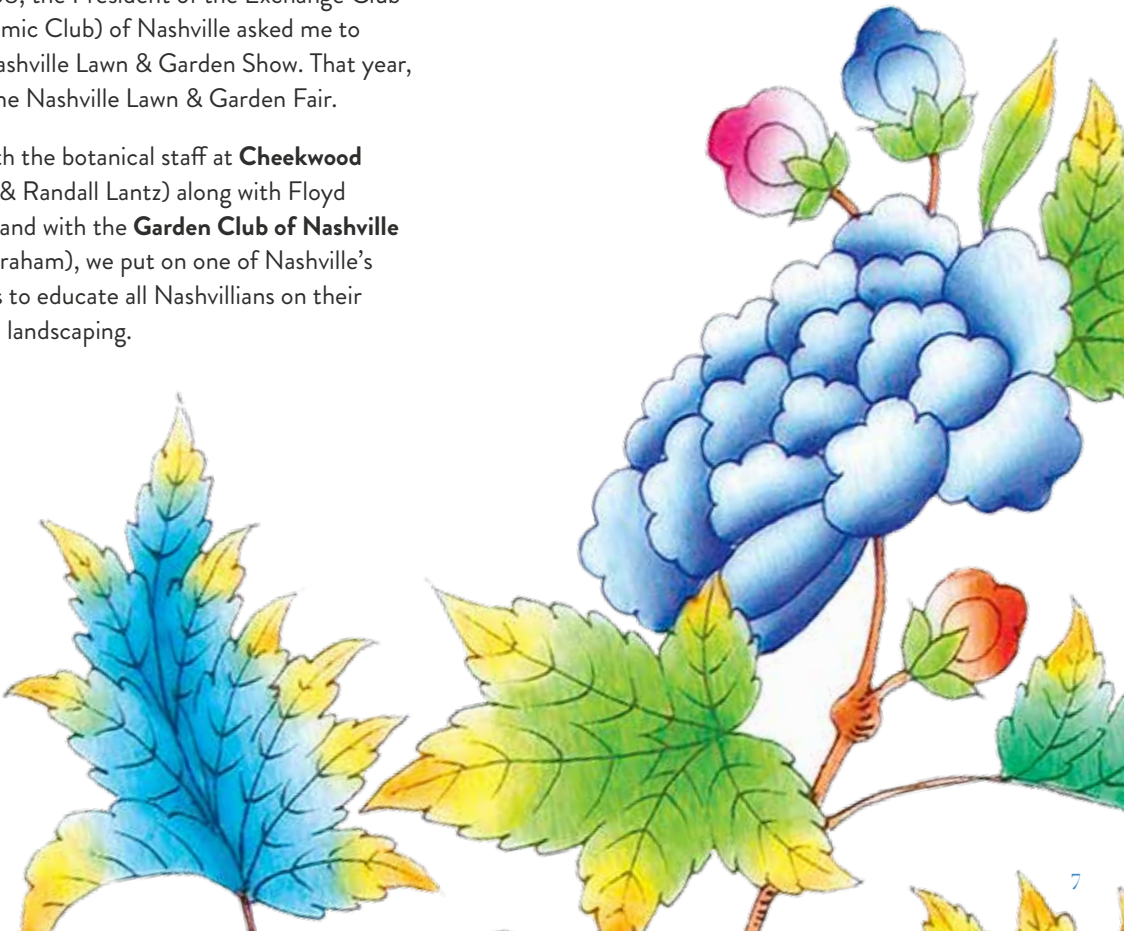
Thank you for coming!
Andrew W. Byrd
Founder & Chief Executive Officer
TVV Capital

Thank you for joining us on this winter day to celebrate the nearing of spring! We hope you enjoy and are inspired by all the beautiful gardens, flowers and antiques.



In 1987-1988, the President of the Exchange Club (now Economic Club) of Nashville asked me to chair the Nashville Lawn & Garden Show. That year, it became the Nashville Lawn & Garden Fair.

Working with the botanical staff at **Cheekwood** (Dick Page & Randall Lantz) along with Floyd McDonald, and with the **Garden Club of Nashville** (Betty B. Graham), we put on one of Nashville's finest shows to educate all Nashvillians on their gardens and landscaping.





WELCOME TO THE 34TH ANNUAL
**Antiques & Garden Show
of Nashville**



Over the past 20 years, the iconic and beautiful Antiques & Garden Show of Nashville has been a constant in both of our lives. Whether we were strolling babies down the aisles eyeing fabulous antique furniture or being loyal volunteers in dozens of roles, we have both loved and participated in this Show for years.

Some 34 years ago, Connie Cigarran and Sigourney Cheek had a vision for what is now known as one of the greatest shows of its kind in the country. Bringing together incredible antiques dealers and gardeners to champion our beloved Cheekwood and now ECON Charities was a genius idea that has grown into what it is today. It was a humbling and thrilling opportunity for us to serve as chairs this year!

If you ask us what matters most in our daily lives, it is the people we love. People we invite into our homes, into our lives and most likely to our tables. Whether it is a simple cup of coffee with a friend or an elaborate candlelight dinner with family, being together is what makes life beautiful. This theme will be echoed throughout the weekend by our extraordinary speakers in the lecture series, as well as up and down the countless aisles of incredible vendors. We hope that we all walk away a little more inspired to create beauty and joy with those around us.

And who can create a more beautiful table than Nashville's very own Corzine & Co.! We are so grateful for the partnership we have between Corzine and Herend China in presenting the iconic Queen Victoria pattern as the "Look of the Show." We know you will all enjoy the timeless beauty and exquisite artistry of the Herend pieces in Cheekwood's amazing garden.

Our show would not be possible without the support of our Presenting Sponsor John Fumagalli and Northern Trust and our Founding Sponsor Andrew Byrd and TVV Capital. Your generosity and excitement for the Show are exceptional and contagious! A huge thanks to the many other corporate sponsors, benefactors and patrons. Your amazing generosity is what makes this Show possible!

We also cannot thank our dear friend and the Show's tireless Executive Director, Amy Albright, enough for her constant encouragement, dedication and hard work day after day in bringing the whole Show together. You are a dream to work with! So now it is finally time, ladies and gentlemen ... with grateful hearts and giddy anticipation, that we both WELCOME YOU TO BEAUTIFUL!

XO
Caroline Cook and Susan Weathersby
2024 GENERAL CHAIRMEN



Bunny Williams



Considered one of the most talented names in design, Bunny Williams is an accomplished businesswoman, entrepreneur, author and philanthropist. A lover of dogs, gardens and china, Bunny's knowledge and expertise is on par with her enjoyment of life. Her business, Bunny Williams Inc., includes Williams Lawrence, Bunny Williams Home, and a range of product and fabric lines, as well as her series of bestselling books.

Bunny launched her interior design firm in 1988 following a 22-year apprenticeship with the esteemed Parish-Hadley Associates, and in the following three decades, it has wrought its own indelible imprint and legacy. Williams Lawrence is renowned for balancing refined beauty, welcoming livable appeal and attention to detail. While the creation of delightful rooms is Bunny's passion, the firm's success is, above all, anchored in long-lasting and valued relationships with its clientele. The resulting commissions – many for repeat homeowners – are found across the United States and abroad; in city apartments, country estates and cottages; in the mountains and by the water. Bunny's own houses and her long career have provided ample material and inspiration for seven books to date, and she is a sought-after speaker and mentor on design, decoration, gardening and entertaining.

Bunny grew up in the countryside near Charlottesville, Va. A watershed moment at age 15 was visiting the Dorothy Draper-decorated Greenbrier Resort, which had a color palette unlike anything Bunny had ever seen. "It really opened my eyes, and the lesson I learned was not to play it safe," Bunny shared. Her parents encouraged her passion for the arts and led her to Garland Junior College in Boston, where she studied interior design.

Upon moving to New York, Bunny worked at Stair & Co., an antiques gallery frequented by Sister Parish and Albert Hadley. Bunny subsequently joined Parish-Hadley and remained at the venerable firm for 22 years. "I was honored to work there and was exposed to so much; their extraordinary projects and partnership, the design process, everything. By the time I left, I'd been the secretary, an assistant and a buyer. I had the tools and experience to run my own enterprise, which I did – starting with three people working out of my guest bedroom!"

Shortly thereafter, fueled by her devotion to gardening, Bunny opened Treillage in 1991 along with her husband, antiques dealer John Rosselli. Considered both groundbreaking and industry-changing, Treillage drew A-list designers, editors and tastemakers to its off-the-beaten-track, Upper East Side destination for the ultimate in home and garden. "We had Treillage for 25 years, but all good things come to an end. Now, with Bunny Williams Home, I'm proud to show an entire line of furniture, lighting, art and accessories under one roof."

Never one to rest on her many awards, accolades and honors, Bunny keeps her eye on what's next, whether it's a new interior design project with her business partner at Williams Lawrence, Elizabeth Lawrence; her new collections for Bunny Williams Home; her collaborations with Ballard Designs; a new fabric line; or her next book.

Follow along with Bunny's personal adventures on Instagram @bunnys_eye and follow the firm @williams_lawrence_interiors.





Honoring Connie and Sigourney AND PAST CHAIRMEN

The Antiques & Garden Show of Nashville was a brilliant idea that has grown and flourished for the past 34 years. Connie Cigarran and Sigourney Cheek were the founders and first ever chairs of the Show in 1991. They handed the reins to Donna Kestner and Peggy Kinnard in 1992 ... and the rest is history!

THANK YOU TO THE AMAZING PAST CHAIRS
WHO ARE FOREVER A PART OF THIS SHOW'S INCREDIBLE LEGACY!

2023

Beth Kost
Kathryn Saunders

2022

Ashley Smith
Julia Spickard

2020

Louise Bryan
Ashley Levi

2019

Martha Chapman
Shea Ghertner

2018

Kim Holbrook
Robin Puryear

2017

Linda Graham
Mary Smith

2016

Elizabeth Coble
Amy Liz Riddick

2015

Julie Fleming
Kae Gallagher

2014

Mindy Jacoway
Vee Vee Scott

2013

Dana Miller
Birgitta Williamson

2012

Sarah Bartholomew
Debbie Best

2011

Kathy Rolfe
Betsy Wilt

2010

Donna Dalton
Carolyn Hannon

2009

Tracy Frazier
Mary Jo Shankle

2008

Sandy Sangervasi
Cathy Shell

2007

Barbara Burns
Julie Gordon

2006

Liz Harwell
Julia Johnson

2005

Nancy Deaton
Elizabeth Papel

2004

Ann Buchanan
Amy Colton

2003

Karen Fleming
Lucy Haynes

2002

Lou Ann Brown
Marjorie Clements

2001

Betsy Brittain
Janette Smith

2000

Mary Gambill
Beth Moore

1999

Emily James
Betsy Wills

1998

Kate Ezell
Jane Waterlow

1997

Kim Davis
Lesley Green
Anne Morgan

1996

Elaine Sullivan
Julie Walker

1995

Holly Bryant
Jackie Hicks

1994

Libby Page
Lynne Rhett

1993

Jane Sloan
Anne Whetsell

1992

Donna Kestner
Peggy Kinnard

1991 FOUNDERS

Sigourney Cheek
Connie Cigarran



JACKSON DURHAM

LUXURY EVENT DESIGN

CREATING BEAUTIFUL EVENTS NEAR AND FAR.

ELEVATED EVENT DESIGN
FLORAL + FURNISHINGS





HARTLEY  BOTANIC

HANDMADE WITH PRIDE SINCE 1938



Victorian Manor | Georgia, USA



Request A Brochure

Let Hartley Botanic bring your garden Glasshouse dreams to life

Our team is looking forward to meeting you in person at our **East and West Gardens booths**. We'd love to collaborate on your ideas in creating the perfect Glasshouse for your needs.



Victorian Grand Lodge | South Carolina, USA
Visit our booth to see the Victorian Grand Lodge



Hartley 10 Planthouse (6 Pane) | Louisiana, USA
Visit our booth to see the Hartley 10 Planthouse

Unrivalled, Unparalleled, Unique. There are glasshouses, and then there are Hartley Botanic Glasshouses. Made with decades of knowledge and experience, a Hartley Botanic structure is the perfect way to bring additional beauty to your garden. Hartley Botanic has been crafting its incomparable range of exceptional Glasshouses and Greenhouses for more than 85 years at it's creative hub in Greenfield, England.

HANDMADE IN ENGLAND - CHERISHED EVERYWHERE

Great savings across our range, get in touch today | 781 933 1993 | www.hartley-botanic.com

© The Royal Horticultural Society. Trade marks of The Royal Horticultural Society (Registered Charity No 222879/SC038262) used under licence from RHS Enterprises Limited.

“smart home”



You're not just describing your ideal home,
you're describing the life you'll live there.

30 Burton Hills Blvd, Ste 207 | Nashville, TN | 615.250.7880 | corcoranreverietn.com

corcoran

©2023 Corcoran Group LLC. All rights reserved. Corcoran® and the Corcoran Logo are registered service marks owned by Corcoran Group LLC. Corcoran Group LLC fully supports the principles of the Fair Housing Act and the Equal Opportunity Act. Each franchise is independently owned and operated.

REVERIE



THE SCOUT GUIDE®

is proud to sponsor the 2024
Antiques and Garden Show
of Nashville alongside our
contributing TSG cities

NASHVILLE & FRANKLIN — CHARLOTTE — RICHMOND — ATLANTA
NORTHWEST ARKANSAS — HUNTSVILLE + GREENVILLE — MEMPHIS
RALEIGH, DURHAM, & CHAPEL HILL

*To learn more about the The Scout Guide®,
TSG guides to the locations listed above, and ways
to discover and support local businesses, visit*

THESCOUTGUIDE.COM



**GOOD
TIMES
ARE RARE
TREAT THEM
ACCORDINGLY**

**JACK DANIEL'S
MAKE IT
COUNT**

PLEASE DRINK RESPONSIBLY

TENNESSEE WHISKEY 40% ALCOHOL BY VOLUME (80 PROOF), DISTILLED AND BOTTLED BY JACK DANIEL DISTILLERY, LYNCHBURG, TENNESSEE.
JACK DANIEL'S AND OLD NO. 7 ARE REGISTERED TRADEMARKS. ©2023 JACK DANIEL'S. ALL RIGHTS RESERVED

MILIEU[®]

A Magazine of Style

SUBSCRIBE BY APRIL 5 TO
RECEIVE MILIEU SPRING 2024

MILIEU-MAG.COM

PHOTOGRAPHY BY SIMON BROWN

10th
ANNIVERSARY



The Perfect Recipe for a Beautiful Life

A special conversation with Ina Garten and Mary Celeste Beall

FRIDAY, JANUARY 12 | 12-1 PM



Mary Celeste Beall, proprietor of the acclaimed resort hotels Blackberry Farm and Blackberry Mountain, will host a special conversation with cookbook author, television host and entertaining icon Ina Garten. Mary Celeste will guide the discussion as Ina shares a charming insider's look into her world and the pleasures of good food and friends, a career in food and writing, and the roads that Ina took to becoming the Barefoot Contessa.

Books are available for purchase in the Show floor lobby during the Show and outside the Davidson Ballroom after this lecture. A portion of each book sale goes back to support the Antiques & Garden Show benefiting **Cheekwood and ECON Charities**.





Ina Garten

Ina Garten's first book, "The Barefoot Contessa Cookbook," was published in 1999 and was one of the bestselling cookbooks of the year. She has since gone on to write 13 phenomenally successful cookbooks and is working on a memoir, to be released October 2024.

In 2002, Food Network approached Ina to do a cooking show based on her cookbooks and her love of entertaining. Today her Emmy-winning cooking show, "Barefoot Contessa," is one of the highest-rated shows on Food Network. In 2021, she starred in "Cocktails and Tall Tales With Ina Garten and Melissa McCarthy" on discovery+. Premiering in March 2022, her new series, "Be My Guest," is multi-platform and structured with three distinct versions: an hourlong extended cut on discovery+, a food-centric half-hour on Food Network and a companion podcast, premiering across platforms.

Ina is currently a monthly columnist for Food Network Magazine and in prior years has also been a monthly columnist at House Beautiful, Martha Stewart Living Magazine and O, the Oprah magazine. In 2015, Ina was named one of Time Magazine's 100 Most Influential People.



Mary Celeste Beall

Mary Celeste Beall is the proprietor of the acclaimed resort hotels Blackberry Farm and Blackberry Mountain in the Great Smoky Mountains of East Tennessee. For more than a decade, Mary Celeste has lived and worked on the family-owned properties. She first joined her late husband, Sam, as he led the transformation of Blackberry Farm into a renowned food, wine and wellness destination.

As proprietor, Mary Celeste, alongside her father-in-law, Sandy, and the Blackberry team, drove the creation and opening of Blackberry Mountain as it evolved into a haven for preservation and personal exploration in relaxation, wellness and adventure. She led creative direction for launching the brand's print magazine, Blackberry Magazine. She continues to share her vision for the expansion of the Blackberry brand, continuing a longstanding reputation for renowned hospitality and celebrated wine and food.



SPONSORED BY:

MILIEU

ADAC

From furniture and lighting to wallcoverings and fabrics, ADAC's 60+ showrooms offer high-end home furnishings that are not only well crafted, they come with a unique point of view that is sure to inspire.



Fabricut



Jim Thompson



Kravit Inc



Patterson Flynn



Peacock Alley



luxe

INTERIORS+DESIGN®



Design where you live.

ARIZONA | AUSTIN + SAN ANTONIO | CHICAGO | COLORADO | DALLAS + FORT WORTH | THE HAMPTONS
GREATER NEW YORK | HOUSTON | LOS ANGELES | MIAMI | NAPLES + SARASOTA | NATIONAL
PACIFIC NORTHWEST | PALM BEACH + BROWARD | SAN FRANCISCO | SOUTHEAST | SOUTHERN CALIFORNIA

FOR THE BEST DESIGN CONTENT, RESOURCES AND INSPIRATION, VISIT [LUXESOURCE.COM](https://www.luxesource.com).

A Parisian's Guide to Celebrating the Good Life

Embracing joie with Ajiri Aki

FRIDAY, JANUARY 12 | 2-3 PM



Ajiri Aki, the founder of entertaining and lifestyle brand Madame de la Maison and author of the captivating book “JOIE: A Parisian’s Guide to Celebrating the Good Life,” will take her audience on a delightful journey through the essence of the Parisian lifestyle. Drawing from her own experiences as a Nigerian American living in Paris, Ajiri will share her insights and lessons she has learned about embracing joie – joy – every day.

Ajiri Aki

Ajiri Aki is a Nigerian American living in Paris and the founder of Madame de la Maison, an internationally celebrated entertaining and lifestyle brand launched in 2018. She was born in Nigeria, grew up in Austin, Texas, and received her B.A. degree from Texas Christian University and Master of Arts degree in decorative arts, design history and material culture from Bard College in New York. Ajiri’s remarkable career trajectory includes time at major fashion publications, curatorial roles with the Metropolitan Museum of Art’s Costume Institute and The Museum of the City of New York, the launch of a fashion video production company and publishing “Where’s Karl?: A Fashion-Forward Parody” (Clarkson Potter) in 2025 and “Joie: A Parisian’s Guide to Celebrating the Good Life” in 2023.

Ajiri was included in “The New Parisienne” (Abrams, 2020), a book highlighting 50 women who are changing the definition of what it means to be Parisienne. In March of 2021, she was chosen as one of seven women to be featured in a short film for LinkedIn for International Women’s Day 2021.

SPONSORED BY:

luxe.
interiors+design



Books are available for purchase in the Show floor lobby during the Show and outside the Davidson Ballroom after this lecture. A portion of each book sale goes back to support the Antiques & Garden Show benefiting **Cheekwood and ECON Charities.**

FLOWER

HOUSE | GARDEN | LIFESTYLE



Flowermag.com/subscribe

The Artistry of Flowers

A floral design lecture and demonstration by La Musa de Las Flores

SATURDAY, JANUARY 13 | 11 AM-12 PM



Experience the beauty of floral design through the eyes of gardener, floral designer and founder of Heartfelt Floristry, Gabriela Salazar. Gabriela will talk about how growing her own garden has changed how she designs with flowers, and she will illustrate how an intimate relationship with flowers is the artistry behind soft, romantic arrangements. Discover how flowers have the power to transform the way you feel as Gabriela shares how her Valle de Bravo, Mexico, garden helped her find her path and place in the world.

Gabriela Salazar

Gabriela Salazar is known for her romantic, lush floral design style. She attributes this effortless style to nature and growing her own flowers. While in the garden, she observes the contour of the plants and trees – taking note of their effortless movement and soft, graceful forms. She translates these garden observations into her floral design work.

By being fully present in her work, both in the garden and in the studio, Gabriela has developed something she calls “flowers from the heart,” where the flowers continuously guide her. With the flowers in mind, she creates rivers of color and textures, layering in movement with delicate florals to add softness and grace to all her arrangements. Furthermore, Gabriela accredits her garden for redefining herself. She created a garden; in turn, the garden helped her find her path and place in the world. Gabriela feels that flowers are not just beautiful to arrange but working with them also teaches you how to be patient, kind, resilient and graceful, offering immeasurable life lessons.

SPONSORED BY:

FLOWER
HOUSE | GARDEN | LIFESTYLE



Books are available for purchase in the Show floor lobby during the Show and outside the Davidson Ballroom after this lecture. A portion of each book sale goes back to support the Antiques & Garden Show benefiting **Cheekwood and ECON Charities.**



Chic Couples on Creating Beautiful Collections

A panel discussion led by Stacey Bewkes with Jesse Carrier and Mara Miller of Carrier and Company and Meredith and Hunter Ellis of JAMES Showroom

SATURDAY, JANUARY 13 | 2-3 PM

Partners in design and in life, renowned industry experts Jesse Carrier and Mara Miller of Carrier and Company and Meredith and Hunter Ellis of JAMES Showroom will participate in an intimate discussion about what it's like to work and create with your spouse. The panel will be moderated by Stacey Bewkes, Quintessence founder and respected voice in the world of design and lifestyle. Afterward, attendees can look forward to a book signing, during which Jesse and Mara will be signing copies of their new book, "Defining Chic."



Stacey Bewkes

Quintessence founder Stacey Bewkes is a well-respected voice for original written, photographic and video content in the world of design and lifestyle. From interiors, art and architecture to antiques and decorative arts, jewelry, travel and more, Stacey presents the stories behind the style with thoughtful, well-researched and beautifully documented content.

After earning her degree in the history of art and architecture from Brown University, she pivoted from continuing on to architecture school to New York City, where she spent the next 17 years as an art director at publishing powerhouse Simon & Schuster. Stacey is the proud mother of four children, whom she raised with her husband in Connecticut before moving full time to her Nantucket island home, where she is currently co-chair of the Nantucket Historical Association's popular fundraiser Nantucket by Design and continues to bring you Quintessence, a discerning online guide to noteworthy people, places and products around the world.



Carrier and Company

Jesse Carrier and Mara Miller, the founding principals of Carrier and Company Interiors, are a husband-and-wife interior design duo who create rooms that offer a confident mix of timeless and contemporary design – both familiar and fresh at once. Named to the prestigious Architectural Digest AD100 and the Elle Decor A-List, Jesse and Mara have garnered accolades from the world’s most prestigious publications, including Architectural Digest, Vogue, Town & Country, Elle Decor, House Beautiful, VERANDA, Luxe Interiors + Design, MILIEU, and World of Interiors. They have been sought out by leading home furnishing manufacturers to bring their unique vision of home and interiors to a wider audience. Their newest monograph, “Defining Chic: Carrier and Company Interiors” (Rizzoli), showcases homes that express their clients’ personalities and dreams, through the practical filters of lifestyle and location, while revealing the design principles behind them. They live in New York City and the Hudson Valley with their two children. For more information, visit www.carrierandcompany.com and [@carrierandco](https://www.instagram.com/carrierandco).



Meredith and Hunter Ellis

Meredith and Hunter Ellis are a dynamic husband-and-wife duo that has garnered significant attention and a loyal, discerning clientele through their fresh approach to the showroom model. Together, Meredith and Hunter bring over 25 years of interior design industry experience and represent dozens of internationally known brands of fabric, wallpaper, furniture, lighting and carpets.

The couple founded their showroom, JAMES, in 2015 and have since expanded across the state of Texas and, most recently, to New York City. JAMES combines beautiful curation with a roster of the most coveted vendors and brands in the design industry, providing patrons with an unforgettable experience.



SPONSORED BY: **FREDERIC**

Books are available for purchase in the Show floor lobby during the Show and outside the Davidson Ballroom after this lecture. A portion of each book sale goes back to support the Antiques & Garden Show benefiting **Cheekwood and ECON Charities**.





bye bye boring,
HELLO
SCHUMACHER

FABRICS • WALLPAPERS • ACCESSORIES

609 MERRITT AVE, NASHVILLE

SCHUMACHER.COM | SCHUMACHERBOUTIQUE.COM



CORZINE & CO.

Herend

4005 HILLSBORO PIKE - SUITE 103
NASHVILLE, TN 37215

615 / 385-0140
corzineco@gmail.com

WHERE
EXCEPTIONAL
TASTE LIVES

VERANDA

VOLUME 38
ISSUE 1

HOUSES *with* HISTORY

THE
PRESERVATION
ISSUE



ON NEWSSTANDS NOW ♦ VERANDA.COM ♦ [@VERANDAMAG](https://www.instagram.com/VERANDAMAG)

2024 SHOW ENTRANCE

“Butterfly Kisses”



Celebrated the world over for elegance, beauty and grace, the humble butterfly holds deep significance for innumerable cultures. Themselves stunning works of nature, their vibrant beauty and colors combine in an endless fascination of patterns. They are the embodiment of transformation and are cherished in our collective human consciousness. For many, they represent hope, endurance, positivity, resurrection, change, freedom, the soul, ancestors, comfort, good luck and love.

Ours were inspired by the exquisite Herend porcelain manufacturers of Hungary, founded in 1826. And they were favorites of Queen Victoria and the Hapsburgs. They flutter and enfold as you enter.

These monumental beauties were envisioned by intrepid Show chairs Caroline Cook and Susan Weathersby and were rendered in moss and flowers by the talented creative team Brian, Lynn and Todd. We most humbly and exuberantly “Welcome You to Beautiful!” Please enjoy the Show.

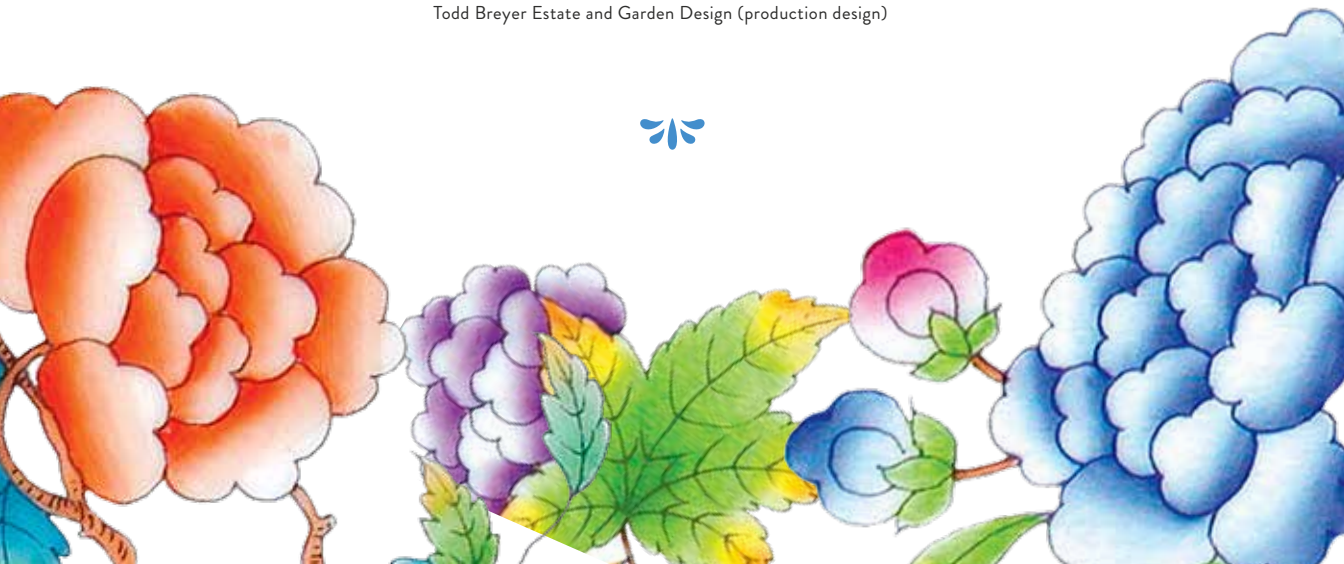
CONTRIBUTORS

General Chairs: Caroline Cook & Susan Weathersby (concept)

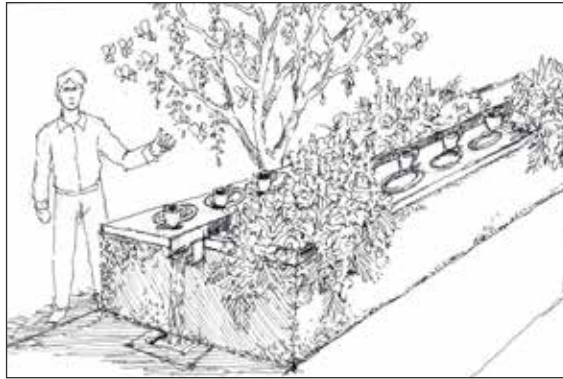
Brian Somerville (sculptor, The Grit Shop)

Lynn Brown (floral design)

Todd Breyer Estate and Garden Design (production design)



“Wellspring of Wonder”



Gardens have been a celebration of hospitality for millennia and help welcome friends into one’s wondrous private demesne. Hedges delineate an immersive garden retreat dedicated to the pleasures of color, taste, scent and sound. A pair of flowing water tables reflects the feasts and fetes of the Italian Renaissance, where every moment at home was a meaningful experience of beauty. Rich jewel-like place settings invite guests to forget life’s daily bustle and enjoy gracious time together.

SPECIAL THANKS TO:

Mary Weber, Cheekwood, Director of Horticulture
Peter Grimaldi, Cheekwood, Vice President of Gardens & Facilities
Corzine & Co.
Jenny Richter Events



Tres Fromme, Cheekwood Designer in Residence

Tres Fromme is currently Cheekwood Estate & Gardens designer in residence and collaborates closely with staff on master planning, garden design and seasonal displays, including Cheekwood Blooms and Holiday LIGHTS.

Tres collaborates with public gardens throughout the United States, all of which have unique identities, cultural and ecological contexts, diverse missions, and distinctive horticultural possibilities. His experience includes a full range of project scales, budgets and scopes – master planning, site design, planting design, gardens for children, seasonal displays and holiday light shows.

His work creatively innovates within the diverse traditions, contexts and functions of each project, while exploring and activating the range of possibilities for people of all ages and backgrounds inherent in gardens.





Cheekwood

ESTATE & GARDENS

With its intact and picturesque vistas, Cheekwood is distinguished as one of the leading Country Place Era estates in the nation. Formerly the family home of Mabel and Leslie Cheek, the 1930s estate, with its 30,000-square-foot mansion and 55 acres of gardens, today serves the public as a botanical garden, arboretum and art museum with furnished period rooms and galleries devoted to American art from the 18th to mid-20th centuries. The property includes 13 distinct gardens, including the Blevins Japanese Garden and the Bracken Foundation Children's Garden, as well as a 1.5-mile woodland trail featuring outdoor monumental sculpture. Each year, Cheekwood hosts seasonal festivals including Cheekwood in Bloom, Summertime at Cheekwood, Cheekwood Harvest and Holiday LIGHTS. Cheekwood is listed on the National Register of Historic Places and is accredited by the American Alliance of Museums and nationally as a Level II Arboretum. It has been voted a USA Today Top 10 Botanical Garden three times and in 2021 was recognized by Fodors as one of the 12 Most Beautiful Gardens in the American South. Cheekwood is located 8 miles southwest of downtown Nashville at 1200 Forrest Park Drive. It is open Tuesday through Sunday 9 a.m.–5 p.m., with extended days and hours of operation depending on the season. Visit cheekwood.org for current hours and to purchase advance tickets required for admission.

————— BROUGHT TO YOU COURTESY OF —————

CHEEKWOOD

3 FROMME DESIGN LLC

NATCHEZ STONE BUILDING STONE & HARDSCAPES

COOK BUILDERS



terra Cottage



A greenhouse provides a burst of nature year-round in the heart of its setting. Whether urban or in the countryside, a well-planned greenhouse can be functional for both botanical creativity and leisure.

Terra Cottage is the ideal venue for an intimate gathering with friends, offering them a chance to linger and appreciate serenity within the tranquility of a nurturing environment of flourishing flora.

SPECIAL THANKS TO:
Goat Turf | McKinnon & Harris | Archalite Outdoor Lighting

BROUGHT TO YOU COURTESY OF



BFT Land Design, Landscape Architect

With over 70 collective years in the landscape architecture profession, partners Julia Baker, Mamie Finch and Ed Tessier founded BFT Land Design in 2022.

Collaboration ensures that the outcome is greater than the sum of its parts. We are committed to listening to and valuing the ideas, skills, talents and workmanship of all stakeholders on a project team.

Molly Sohr, Design Collaborator

Molly Sohr events is a design-focused event planning company based in Nashville known for her beautifully designed events, thoughtful details and organized planning and led solely by Molly Sohr, a Florida-raised turned Nashville local (for 12-plus years now). Molly launched her event business in 2017 with a passion for creating memories that last a lifetime and designs that stand the test of time.

Atelier Vals, Stone and Masonry Contributor

We are a studio that specializes in the aesthetics of concrete. Our distinctive Vals Stone furnishings, pavers and outdoor elements are handcrafted with a passion and meticulous attention to detail that transforms beautiful spaces.

Bonner's Lawn and Landscaping, Inc., Landscape Contributor

Bonner's Lawn and Landscaping has been providing landscaping services to Williamson and Davidson counties since 1987. We specialize in providing quality landscape installation and maintenance services to our clients using the best horticultural practices and materials available. Our goal is not only the beautification of the property's landscape, but also its long-term success. Our conscientious, long-tenured staff works diligently to ensure each project is done with pride.



ATELIER VALS

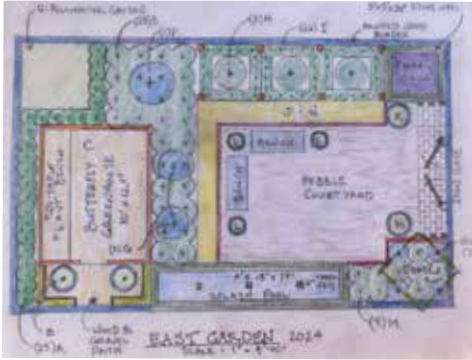


PRIMARY CONTRIBUTORS

Bonner | Atelier Vals



‘Les Papillons ~ the Butterfly Effect’



It has truly been a pleasure bringing this garden to life. Please join us for the Live Butterfly Experience nestled within our fabulous British Greenhouse, and learn about what each of us can do to help pollinators survive the larger world. Stay to delight in our exemplary design features, which can be translated to anyone’s home environment, humble or grand, for a lifetime of joy and enrichment with details in flowers, fragrance, floral, ornament and lighting, as the roost for your Wishing and Gratitude Butterflies brought to you by Antiques & Garden Show.

SPECIAL THANKS TO:

Beth and Peter Thevenot, David W. Dunn (bee consulting, Kernal Dave), and Ann Jackson. And a huge thanks for support and inspiration from our general chairs: Caroline Cook and Susan Weathersby. And with deepest gratitude to our Live Butterfly experience sponsor, Allen DeCuyper (Parks Real Estate)

BROUGHT TO YOU COURTESY OF



Todd Breyer, Estate and Garden Design

With over 40 years of professional horticultural experience, a degree with honors in landscape architecture from the University of Georgia and studies abroad in Tuscany, Todd Breyer is well versed in the aspects of the construction and green industries. He enjoys working in a variety of styles to suit the tastes and individual needs of each client. We take pride in listening to help realize your dreams. A frequent lecturer and TV and print contributor, Todd is also heavily involved in the community with the historic Nashville City Cemetery, Antiques & Garden Show gardens chair and board, Metro Virtual School, Cheekwood, Metro Beautification and Environment Commission, Nashville Lawn and Garden Show, Richland Park Farmers’ Market and Library and Senior Center, Herb Society of Nashville & Dinner Group coordinator, and 4-year-old granddaughter, Remi.



Matt Yates, Turf Managers LLC

Matt Yates is president of Turf Managers LLC, a lawn and landscape maintenance solutions company. Matt has been working in the green industry for over 25 years and is adept at solving all types of turf and landscape issues. Turf Managers LLC has been serving the Greater Nashville area for over 25 years providing Middle Tennessee residents and businesses with high levels of skill in efficiency in taking care of all their lawn and landscape needs.

Rich in knowledge and experience, Matt and his team know just the plants or the turf types to make each property shine. A native Nashvillian and lifetime resident, Matt can speak to the things that work here year in and year out. Matt is a certified drainage specialist and holds a pest control license with the state of Tennessee Department of Agriculture.

PRIMARY CONTRIBUTORS

Turf Managers | Site One | Vintage Millworks | Cook Builders
Knestrick by Design | River Road Farms | Ingram Arboriculture

ADDITIONAL CONTRIBUTORS

Milkweed and Honey Farm | Nashville Bonsai Society
Nashville Area Beekeepers Association | Osmani Denis & crew
Owen Reich (bonsai and aesthetic pruning) | Ben & Lael | Atelier Yaws
Tennessee Gesneriad Society | Rita Venable (butterfly author)
Linda Robertson (pollinator plants) | American Heritage Trees
Wilson County Master Gardener Association
Orchid Society of Middle Tennessee | OLP (lighting)



HONESTY | INTEGRITY | EFFICIENCY | DEPENDABILITY



COOK BUILDERS

Architects

Catherine Sloan

Photography

Adrienne Figueroa

Interiors

Sarah Bartholomew

Landscape

Gavin Duke



1987

NEW PR AGENCY IN NASHVILLE

1997

Pro Football in Tennessee

2007

PREDS STAY IN SMASHVILLE

2016

WINE OFFICIALLY IN GROCERY STORES

2021

**MAJOR MUSIC MUSEUM
OPENS IN NASHVILLE**

2022

WOMEN IN FULL OWNERSHIP

Since 1987, whenever something big hits Tennessee, we're part of it.

MP&F

PR • MARKETING • ADVERTISING

mpf.com



Supporting the Antiques & Garden Show since 1991.

ECON Charities is the charitable arm of the Economic Club of Nashville, a local civic and service organization that has existed to interact with, improve and impact the city of Nashville for more than a century. ECON Charities serves to eliminate barriers for fragile families to enjoy enriching cultural experiences and create lifelong memories. Proceeds from the Antiques & Garden Show help support Nashville families through ECON Charities' two main beneficiaries: The Family Center, which offers evidence- and research-based programs to break intergenerational cycles of childhood trauma, and Light A Spark, a homegrown ECON initiative that facilitates ECON Charities' mission of helping to build resilient families and communities through shared cultural experiences.

Learn more about ECON.
econclubnashville.org



510 MERRITT AVE | 5 MINUTE DRIVE FROM THE ANTIQUES & GARDEN SHOW



EXPERIENCE NASHVILLE'S

FINEST DESIGN

ALL UNDER ONE ROOF

NASHVILLE
DESIGN
COLLECTIVE

 **kolo collection**
outdoor furnishings

FRANÇOIS & Co.

DG DESIGN GALLERIA
kitchen and bath studio

VISUAL COMFORT & Co.

RENAISSANCE THE BATH

BENNETT

kravet | **WORKSPACE**
NASHVILLE

Peacock Alley

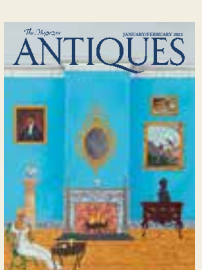
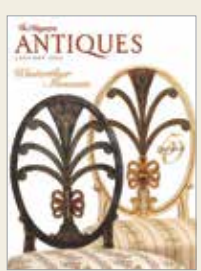
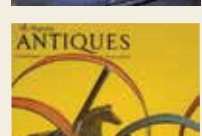
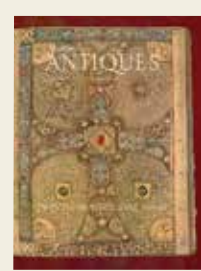
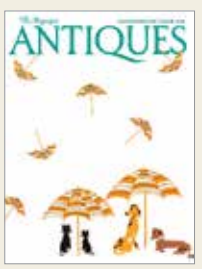
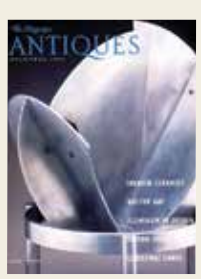
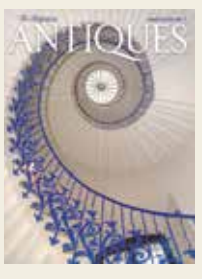
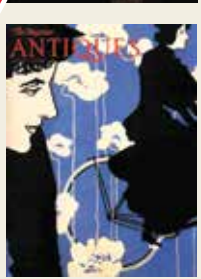
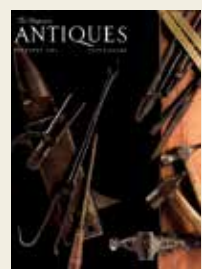
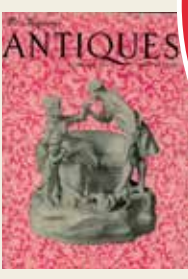
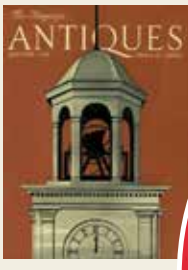
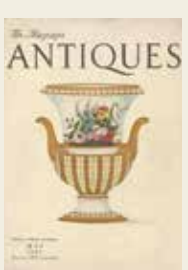
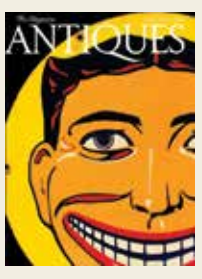
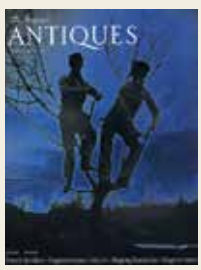
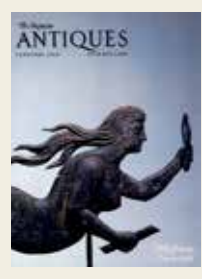
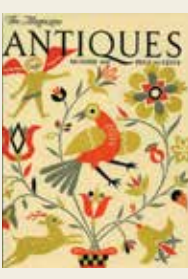
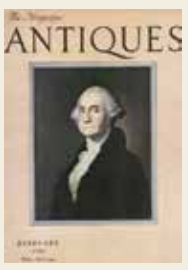
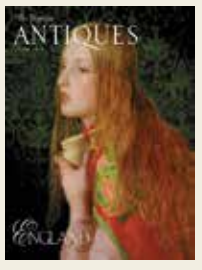
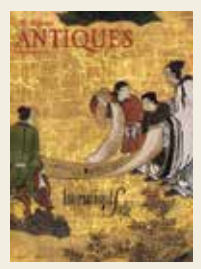
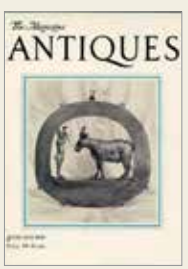
textures
NASHVILLE

 **ARTISTIC TILE**

PRODIGY
DESIGN • KITCHEN • BATHS

CHRISTOPHER PEACOCK

 **ROBIN RAINS**
INTERIOR DESIGN • ANTIQUES



Nashville Interiors



Proud Sponsor of the
Antiques & Garden Show



MIDDLE TENNESSEE'S PREMIER
INTERIOR DESIGN AND LIFESTYLE
PUBLICATION SINCE 2000.
NASHVILLE INTERIORS SHOWCASES
THE PEOPLE WHO INSPIRE IN THE
SPACES THEY LIVE.



With its intact and picturesque vistas, Cheekwood is distinguished as one of the leading Country Place Era estates in the nation. Formerly the family home of Mabel and Leslie Cheek, the 1930s estate, with its 30,000-square-foot Mansion and 55-acres of gardens, today serves the public as a botanical garden, arboretum, and art museum with furnished period rooms and galleries devoted to American art from the 18th to mid-20th centuries. Each year, Cheekwood hosts seasonal festivals including *Cheekwood in Bloom*, *Summertime at Cheekwood*, *Cheekwood Harvest* and *Holiday LIGHTS*. Cheekwood is listed on the National Register of Historic Places and is accredited by the American Alliance of Museums and nationally as a Level II Arboretum.

Visit Cheekwood's 13 exquisite gardens this weekend. Explore the monumental sculptures on the 1.5-mile woodland Ann & Monroe Carell Jr. Family Sculpture Trail. Discover the interactive features in the Bracken Foundation Children's Garden and nurture your spirit in the tranquil setting of the Blevins Japanese Garden.

Please note the Historic Mansion & Museum is closed through February 9 for repairs and lighting upgrades.



2024 Special Art & Garden Exhibitions *at* Cheekwood

Edgar Degas: The Private Impressionist, Works by the Artist & His Circle

March 9 – June 16

Over 80 works on paper by Degas and artists including Mary Cassatt, Paul Cezanne, Pierre-Georges Jeannot and others.

Adolph von Menzel (German, 1815–1905), *Menzel's Sister Emilie, Asleep on a Train*, ca. 1870, Graphite on light tan wove paper on a lighter-color paper mount.

Edgar Degas (French, 1834–1917) and Auguste Clot (French, active 19th century), *Before the Race*, ca. 1895. Color lithograph on lightweight tan wove paper.

Exhibition organized by Landau Traveling Exhibitions, Los Angeles, CA in association with Deneberg Fine Arts, West Hollywood, CA.



Trolls: Save the Humans

May 2 – September 8

Six gigantic sculptural trolls by prominent Denmark-based recycle artist Thomas Dambo take up residence at Cheekwood to share messages of stewardship and sustainability.

Courtesy Atlanta Botanical Garden



Interventions: Ann Carrington

June 29 – October 27

British artist Ann Carrington creates beautiful bouquets and other mixed metal sculpture from discarded and found materials. Her exhibition will be on display throughout the Mansion's period rooms.

Ann Carrington (British, 1962), *Comtesse de Bouchard*, 2023, Silver, nickel and steel plated cutlery.

Ann Carrington (British, 1962), *Arrokoth*, 2023, Silver, nickel and steel plated spoons.



Permanent Collection

Ongoing

Cheekwood's permanent art collection includes paintings, works on paper, sculptures, furniture, and decorative arts with important examples of American art pottery, Worcester porcelain and American Impressionist paintings.



ORCHIDS AT CHEEKWOOD

FEBRUARY 10 – MARCH 10



Cheekwood
ESTATE & GARDENS





CHEEKWOOD IN BLOOM

MARCH 9 – APRIL 14

250,000
BLOOMING
BULBS





We're on a Mission

*...breaking intergenerational
cycles of childhood trauma
& creating resilient communities
where all children thrive*

Nashville
Murfreesboro
Knoxville

Now onsite with

Davidson County Juvenile Court

helping its families, along with our community's most vulnerable families,
through evidence-based parenting groups, teen parenting support,
1:1 family coaching, & case management.

**It takes a village to raise a child;
we hope you'll JOIN OURS in positively**

**changing lives • changing families
changing children's futures**

Donate • Volunteer



familycentertn.org

For its support of our mission & donation of this space... we're grateful to



A RARE EXPERIENCE, WELL DONE.

RANKED TOP 1% OF RESTAURANTS WORLDWIDE.

RANKED #4 FINE DINING RESTAURANT IN THE COUNTRY.

- TRIPADVISOR

BEST RESTAURANT / BEST STEAKHOUSE / BEST SERVICE

BEST RESTAURANT WITH A VIEW

- NASHVILLE SCENE



BOURBON STEAK
NASHVILLE

NASHVILLEBOURBONSTEAK.COM | [@BOURBONSTEAKNASH](https://www.instagram.com/BOURBONSTEAKNASH)

LOCATED ACROSS FROM THE ANTIQUES & GARDEN SHOW INSIDE JW MARRIOTT NASHVILLE



C U R R E Y
& C O M P A N Y

curreyandcompany.com

Lighting | Furniture | Accessories



- Audit & Assurance*
- Tax Strategy & Compliance*
- CFO Services*
- Business Valuation*
- Litigation Support*
- Forensic Accounting*
- Healthcare Consulting*
- Outsourced Human Resources*
- Managed IT & Cybersecurity*

Everything we do can be summarized in Crosslin's tagline "Do More. Be More®" It highlights the commitment that the Crosslin team will do more, so our clients can in turn be more.



Regional accounting, consulting, & information technology firm



Providing business solutions for 35 years



Strong in integrity & customer service



615.320.5500

www.crosslinpc.com





Todd Breyer

Estate and Garden Design

National award-winning designer with a degree with honors in Landscape Architecture from the acclaimed University of Georgia, and studies abroad in Tuscany, Italy, as well as Northern California. Creating exquisite, individually tailored, custom grounds, gardens, and neighborhoods since 1985. We love to create at all sizes and scales. Projects include private estates, Cheekwood Botanical Gardens, the Opryland Hotel, the historic West Meade Mansion, Adelia Acklen's Fairvue Plantation, Northumberland neighborhood, Otterwood subdivision, universities, and more.

It is an honor to chair the Garden Displays again for the 2024 Antiques & Garden Show, as well as personally design the East Garden Butterfly Experience.

toddbreyer@bellsouth.net | (text) 615.663.8558



SPECIAL EVENT

Bourbon Party

FRIDAY, JANUARY 12 | 6:30 - 9 PM

Join us for previewing and shopping the Show early with specially Crafted Bourbons, Southern Fare, Live Music



SPECIAL EVENT

Music in the Gardens

SATURDAY, JANUARY 13 | 3:30 - 5:30 PM

Music City means Music in the Gardens. Listen to talented musicians as you stroll and shop the Show floor.



Come see us before or after your visit to the A&G Show.

WooSkincareAndCosmetics.com
Green Hills - Fashion Square Center
2154 Bandywood Drive | 615-383-2170


PRINTS
CHARMING
SOHO

*Purveyors of
European
antique art and
ephemera.*

*Collecting from
the past, we seek
the unique
and the beautiful.*

1903 Cahaba Road
Mountain Brook, AL
35223
(205) 968-1239
@printscharmingsohonyc



VINTAGE
MILLWORKS
— INC. —

Preserving the elegance of yesterday
while building for tomorrow



contact: (615) 244-8044 | vintage-millworks.com | sales@vintage-millworks.com

M. STEFFENS INTERIORS

MSTEFFENSINTERIORS@GMAIL.COM

901-481-3357

INSTAGRAM: @MSTEFFENSINTERIORS



KATIE GIBSON

INTERIORS



nFOCUS

is a proud sponsor of the
Antiques & Garden Show.



www.nfocusmagazine.com



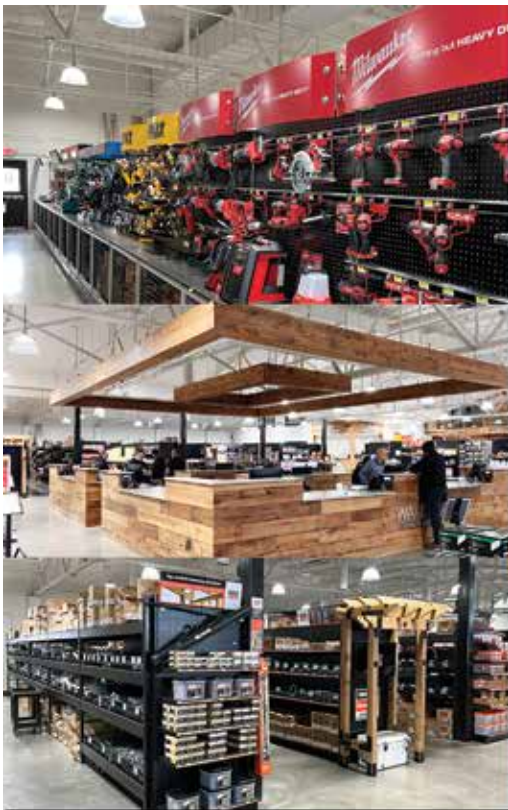
The Art of Living Well



Celebrating 40 years of exquisite interiors and innovative architecture.



atlantahomesmag.com



LBM JOURNAL BEST CONTRACTOR SUPPLY COMPANY IN THE U.S.A. FOR 2023

NASHVILLE, TN

DEBBIE MATHEWS

ANTIQUES & DESIGNS



TIMELESS. COLLECTED. BEAUTIFUL.

5121 HARDING PIKE NASHVILLE, TN 37205 | 615.457.2102 | DEBBIEMATHEWS.COM

PHOTOGRAPHED BY: LESLEE MITCHELL

20 The Harding 24 Art Show



thehardingartshow.com
@thehardingartshow



FEATURED
ARTIST

Ashley
Mary



MAY 2-4, 2024

THANK YOU TO OUR SPONSORS

CapWealth

INFINITY
HOSPITALITY

PMC

Best Brands
INCORPORATED

SPERRY'S
RESTAURANT
ESTABLISHED 1934

SAM'S PLACE

KRISTEN WINSTON
CATERING

John Fayard

JAMES STEPHEN
TURNER FAMILY
FOUNDATION
MEMPHIS, TN




HILL CENTER

BELLE MEADE | BRENTWOOD | GREEN HILLS
 UPGRADE SHOPPING + DINING



BUILDING A LEGACY ● GIVING WITH GRATITUDE ● CREATING COMMUNITY

HILLCENTERGREENHILLS.COM HGILL.COM HILLCENTERBRENTWOOD.COM



INTERIOR ANTHOLOGY

NEW DEAD FLAT

TENNESSE'S FULL LINE STOCKIST OF FARROW & BALL PAINTS & PAPERS



YOUR *Williamson*
A DISTINCTLY SOUTHERN PLACE
REAL. LOCAL.

PROUD TO SUPPORT
ANTIQUES & GARDEN SHOW
NASHVILLE



SCAN FOR EVENT COVERAGE & MORE



Direct importers and weavers
of fine reproduction, vintage
and antique rugs.

4515 Trousdale Drive
Nashville, TN 37204
615-484-1719



info@nashvillerruggallery.com



[@nashvillerruggallery](https://www.instagram.com/nashvillerruggallery)

Parthenon

PUBLIC
RELATIONS

Modern methods.

Traditional foundation.

We build icons that stand the test of time.

parthenonpr.com | [@parthenon.pr](https://twitter.com/parthenon.pr)



CHRISTOPHER PEACOCK

LUXURIOUS FITTED CABINETS FOR EVERY ROOM



VISIT OUR SHOWROOM AT THE NASHVILLE DESIGN COLLECTIVE / 510 MERRITT AVENUE / SUITE 203 / NASHVILLE, TN / 615-908-0404
PEACOCKHOME.COM @CHRISTOPHERPEACOCK

EPERGNE

Nashville's Destination for the Best in Home Accessories, Tabletop, and Gifts





Rick Steves'
Europe

P. Allen Smith's
Garden Home

This Old
House

Kevin Belton's
New Orleans
Celebrations

Lidia's
Kitchen

@create



Watch **Create TV** on **NPT4**

Lifestyle · Cooking · Gardening · Travel

Over the Air - 8.4
Comcast - 256, 1161



MEET THE NEW

IRONWARE

where creative history meets innovation



Shown here: *The Banks Pendant* – no. 8300

IRONWAREINTERNATIONAL.COM — 615.726.2500



DAVID LUSK GALLERY

Fine Contemporary Art . 516 Hagan . Nashville

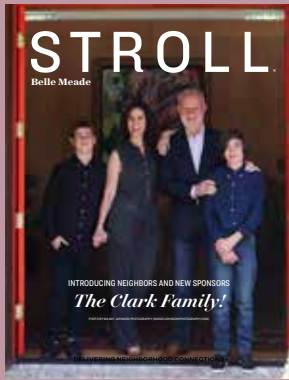
Catherine Erb . 2023, mixed media photo encaustic on panel, 48" diameter




STROLL

Belle Meade

Connecting Neighbors With Their Belle Meade Community Since 2012



 @strollbellemeade

StyleBlueprint

FOR A LIFE OF STYLE + SUBSTANCE *delivered daily*

styleblueprint.com





Antiques & Garden Show Leadership

2023-2024
BOARD OF DIRECTORS

Mrs. Caroline Cook and
Mrs. Susan Weathersby
GENERAL CHAIRMEN

Mr. John Nail Jr.
CHAIRMAN/PRESIDENT

Mr. Chris Hilton
TREASURER

BOARD MEMBERS

Mrs. Sarah Bartholomew
Mrs. Debbie Best
Mr. Todd Breyer
Mrs. Mary Elizabeth Davis
Mrs. Nancy C. Deaton
Mr. Peter Grimaldi
Mrs. Jenna Muller
Mrs. Kathy Rolfe
Mr. Steve Sirls
Mrs. Janette S. Smith
Mr. Cameron Wells

DIRECTORS EMERITUS

Mr. Stephen (Steve) E. Blackmon Jr.
Mrs. Connie M. Cigarran
Mrs. Elizabeth Foss



2024 NATIONAL
ADVISORY COMMITTEE

Bunny Williams

Williams Lawrence
New York, New York
williamslawrence.com

Alexa Hampton

Mark Hampton, LLC
New York, New York
markhampton.com

Bobby McAlpine

McALPINE
Atlanta, New York, Nashville, Montgomery
mcalpinehouse.com

Charlotte Moss

Charlotte Moss, LLC
New York, New York
charlottemoss.com

Ben Page

Page Landscape
Nashville, Tennessee
page-landscape.com

Corey Damen Jenkins

Corey Damen Jenkins & Associates, LLC
New York, New York
coreydamenjenkins.com

John Rosselli

John Rosselli & Associates
New York, New York
johnrosselli.com

Gil Schafer

Schafer Buccellato Architects
New York, New York
gpschafer.com

Margot Shaw

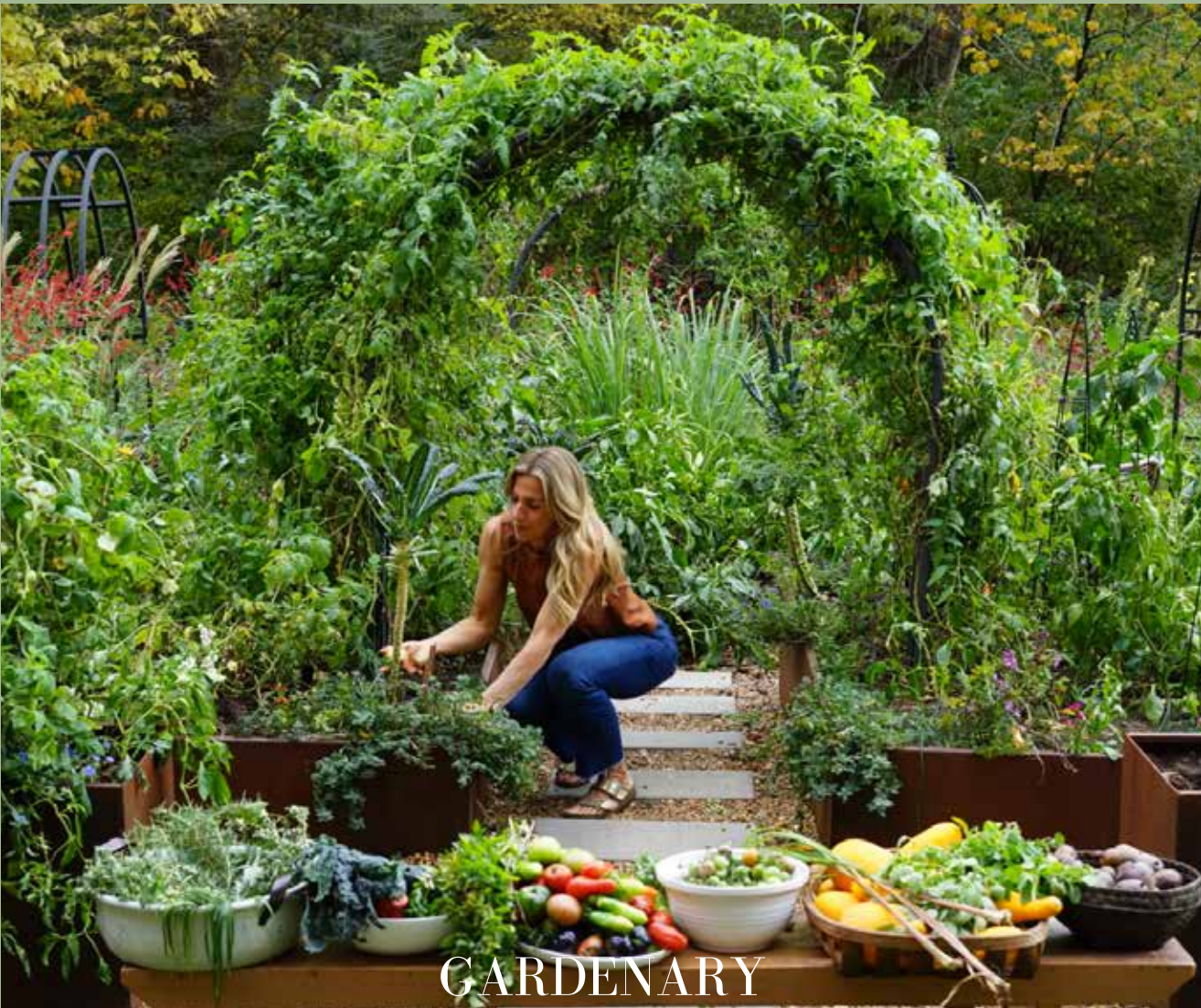
FLOWER Magazine
Birmingham, Alabama
flowermag.com

Remco van Vliet

Van Vliet & Trapp Event Design
New York, New York
vanvlietandtrap.com



Turn Your Backyard Into a
Beautiful & Delicious
GETAWAY



GARDENARY

SHOP GARDENARY'S FULL LINE OF RAISED
BEDS, TRELLISES, AND KITCHEN GARDEN
TOOLS & SUPPLIES
gardenary.com

BOOTH
H51



GOO GOO

CHOCOLATE CO.

SHOP, SAVOR, AND EXPERIENCE
THE HOME OF AMERICA'S FIRST
COMBINATION CANDY BAR.

**SWEET MEMORIES
AWAIT!**



OPEN 7 DAYS A WEEK • 10AM-6PM • 116 3RD AVENUE SOUTH

GOOGOO.COM • @GOOGOOCLUSTERS



2024 Show Supporters

Antiques & Garden Society

Suzanne E. DeLapp Hudson Fund

Pauline Pons

Platinum Benefactors

Mr. and Mrs. Dale Allen
Sheri Best
Sylvia and Doug Bradbury
Louise Bryan
Connie and Tom Cigarran
Caroline and West Cook
Maura Costello
Mr. and Mrs. John P. Donnelly

Mrs. Alexis Eisaman
Jennifer Frist
Julie Frist
R. Newell and Bettie Y.
Graham Foundation
Jennie Garth and Rob Lowe
Katie and Charlie Gibson
Lesley Green

Joanne Hayes
Glenna and Sam Hazen
Gale and Connie Higgs,
Nashville Landscape Systems
Mr. and Mrs. Bruce Hill
Kyle Irwin
Mr. and Dr. Clay Staley
Renee Davis McDonald,

Pretty Presentations
Sandra Sangervasi
Lisa and David Sinak
Rita Spitz
Mr. and Mrs. William C. Stone
Ashley and Ward Waltemath
Susan and E.W. Weathersby
Barby and Govan White

Golden Benefactors

Ann Griffith Ash
Toni and Seth Bernstein
Mrs. Alton E. Blakley, Jr.
Mr. and Mrs. Cory Brown
Mary Lea Bryant
Joanne Cato and Marlin Forbes
Kelly Crockett

EBS Foundation
Kate Read Ezell
Karyn McLaughlin Frist Fund
Shea and Doug Ghertner
Karen Gray-Krehbiel
Lucy and Jeff Haynes
Mr. and Mrs. Clay T. Jackson

Mr. and Mrs. Calvin P. Lewis
Alan and Heather Looney
Mr. and Mrs. David McClellan
Mr. and Mrs. Louis Mohana
Ann Morrical
Lise and Will Morrow
Elizabeth L. Nichols

Kathy and Bob Rolfe
Eric Ross Interiors
Lynn and Rick Scarola
Steve Sirls and Allen DeCuyper
Ms. Davonne Smith
Katie and Tom Steele
Mary Harding Talbot

Silver Benefactors

Kris Penniall and Jill Adams
Mrs. Jeffrey Akeson
Mr. and Mrs. Phillip Ali
AMP Bookkeeping, LLC
Perri Anderson
Donald Anderson and
Jennifer Thompson
Anonymous
Ami Austin
Mrs. Heidi Avedisian and
Ms. Stuart Mesires
Lindsey and Merrick Axel
Baker Design Company
Crystal Baker
Jessi and Joe Baker
Mr. Billy Baynes
Thomas Barrett and Belinda Ann Berry
Mr. and Mrs. Samuel Bartholomew III
Jill Bauman
Beep Design Consulting
Mr. And Mrs. John Berry
Debbie and Buddy Best
Pam Blank
Kim and Brad Blevins
Pamela Bollinger
Botanical Wonder
Mr. and Mrs. Trey Boyette
Patricia Brinson
Brittany Events Co.
Mrs. Amy Brock
Brooke Riebeling Interiors

Allison Brooks
Missy Brower and Sara Ludlam
Brandi Brown and Susanne Dudley
Mr. and Mrs. M. Brunelle
Eliza and Stuart Brunson
Mr. and Mrs. Larry Bryan
Bryant Foundation
Mr. and Mrs. Frank M. Bumstead
Laurel Buntin
Phoebe Burke and Cynthia Peters
Susan and Damon Byrd
Susan Campbell
Frances Carden
Paula Carlini
Caroline Kofol Interiors
Michael Carter
Wendy Chancellor
Carol Chanin
Mr. George and Mrs. Natalie Clements
Chelsea Robinson Interiors
Mitsy Clendenin
Dorothy and Mark Cobb,
Susan and Russell Turner
Maggie Cobb-Boyd and
Susan Lawless-Glassman
Coleman Tractor Company
Ellen D. Collier
Mrs. Katy Collins
Kirby Collins
Rebecca Hiatt Collins
Elizabeth and Bob Corker

Jill Crocker and Denice McMahon
Kirsten and Bruce Crosby
Katherine and Keith Crosthwaite
Dr. Donna J. and Mr. Keith B. Crowe
Marilyn Crowley and Nancy Murphy
Katie Crumbo
Rowena Cuffe
Delphine Damon
Susannah Danforth
Mr. and Mrs. David Darst
Mr. and Mrs. Keith Davidson
Mrs. Robin Davis
Anne Davis and Karl Dean
Diane N. Dean
Dr. and Mrs. Mark Deaton
Mr. and Mrs. Bill DeCamp
Kim and Eddie DeMoss
Elizabeth Dennis
Mr. and Mrs. Justin DeWitte
Mary Donnell
Helen McTyeire Drennen
Duke Design Group, LLC
Mr. and Mrs. Mike Dunn
Erica Arcudi Fine Art
Carolyn Ellis
The Enchiridion Foundation
Elizabeth Estopinal
Mr. and Mrs. James Ewing
Karry Ankenbrandt and Randy Farmer
Fine Design
Virginia Fitzgerald

Mr. and Mrs. Randall Fojtasek
Fork and Field
Whitney Forstner and Stevie Lord,
INTO/ART
Mr. and Mrs. Thomas A. Gallagher
Lynn and Scott Ghertner
Amy Montgomery Gibbons
Minna Gioia
Krista Giovara
Dr. Laura Goff
Dolly and Wesley Goings
Julie and Bob Gordon
Mary Grant
Megan Gregor
Catherine McNamara Grier
Laura Grimm
Suzy Grote
Melissa Grove
Mrs. Cindy Grumney
Mrs. Natalie Hager
Handley Breaux Designs
Mrs. Robert C. Harwell
Leah and Jeffrey Hasson
Elizabeth and Bill Hawkins
JoAnne Haynes
Mr. and Mrs. J. Keith Hazelrig
Joellyn Helman
Mrs. Deborah Henry
Larie Hensley
Mr. and Mrs. John S. Hicks, Sr.
Amie Hinds and Katie Jarmen

2024 Show Supporters

Silver Continued

Historical Concepts - Architecture
& Planning
Ms. Amy Graham Hobbs
Augusta Brown Holland
Renee Hopke
Kay House
Annetta Howell
Brigitte Hubbard
Natalie Huffaker and Francie Hargrove
In Rem Solutions
Stephanie Ingram
Irish Acres Gallery of Antiques
Brian Jackson and Roger Moore
Jaimee Rose Interiors
Mr. and Mrs. Brad Jancik
Kathleen Janke
Gina Jeckering
Mrs. Melinda Johnson and
Mrs. Karen Stauffer
Teri Jones
Mrs. Jonathan Julian and
Miss Gracie Julian
Barbara Kamensky and Margaret Jones
Jamee Kane
Mrs. Allison F. Kearney
Claudia Kelley
Mr. and Mrs. Stephen Kost
Kerrin and David Kowach
Debby and David Kvam
Mr. and Mrs. Allen La Lond
Kelly Lansford
Lauren Pendleton Design
Barbara Lingo and Karen Lewis
Jack and Susannah Lowery
Mrs. Elizabeth Marie Lutz
Jane S. Mackey
Mr. and Mrs. David L. Manning
Mr. and Mrs. Douglas Marchant
Marsh House Rum
Kaaren May

Jennie and Rob McCabe
Jennie T. McCabe
Caryn McCann
Matt and Jane Beth McCarty
Elizabeth and Mark McDonald
Tricia and Doug McDowell
Suzanne McGee and Leslie Johnson
Wentworth McGovern
Mickey and Jan McKeel
Donald and Louise McKenzie
Leah Chancellor McKenzie
Carole and Jim McWilliams
Mrs. Joan Millman
Holly Moffett and MaryBeth Gibson
Ulrike Schlaflay and Isabelle Montupet
Mr. and Mrs. Joseph Moore
Ellen L. More
Lori Morgan
Linda and Rock Morphis
Lucas/Eilers Design Associates
Melissa Mosteller & Patrick Clark
Mrs. Moriah Murrell and
Ms. Jane Murrell
Mrs. Marcia Nash
Dr. and Mrs. Charles L. Newman
Elizabeth Newman
Diana Oglesby
Gohar Ohanian and Vartuhi Vartanyan
Mr. and Mrs. William A. Oldacre
Mr. and Mrs. William A. Oldacre, Jr.
Dana Oman
Elizabeth Page
Elizabeth and Larry Papel
Jan Pass
Kerry Patel
Mr. and Mrs. James Stephen Payne
Brett and Gail Pheffer
Betsy and Anthony Pie
Alis Pruett and Lala Sarkissian
Mr. and Mrs. Hugh M. Queener

Dr. Richard R. Ramirez and
Mr. Gary N. Hibbits
Mrs. Taylor Ramirez and Mrs. Sally
Rose Lassiter
RAVEN LABATT Interiors
Pat and Gayle Ray
REVIVAL HOME
Trish and Carl Ring
Mary Crawford and Cindy Ritter
Mary Carpenter and Susan Robertson
Mr. and Mrs. Farrell E. Robinson
Kathleen Rogers
Molly Russell
Molly E. Ryan
Robert Samuels
Sandra Schatten Foundation
Mr. and Mrs. Michael Saunders
Savage Interior Design
Schafer Buccellato Architects
Liz Schatzlein
Mary Scheible and Emily Whittaker
Mrs. Leo B. Schmid
Janis Schonfeld
Mr. and Mrs. Eugene Shanks, Jr.
Shaw Chambers Design
Jamison Shepherdson
Melissa and Terry Shirey
Mary and Christopher Simonsen
Joanne Slaughter
Ashley B. Smith
Mrs. Dayna Turney and
Dr. Melissa Smith
Monty Smith and Mark O'Bryan
Tyler Spano
Julia and Justin Spickard
Frances and Jimmy Spradley
Starks Development Group
Mrs. Carolyne Steiner
Mr. and Mrs. Jim Stine
Mr. and Mrs. Michael Stone

Mrs. W. Lynn Stringer
Virginia Lodge and Sarah Lodge Tally
Shannon Tarnutzer
Debra and David Taylor
Stewart Taylor
The Morris Estate
The Wandering Petal
Caroline and Michael Thompson,
Melanie and David Dowell
Sarah Thompson
Stephanie Thorne
Susan Larson Design
Mr. and Mrs. Cromwell Tidwell III
Michelle Ulmer-Parker
Julie Valach
Joyce Vise
Elizabeth Wagster
Kathleen Waite
Barbara Wallace
Linda Malouf Walter
Laura Warren
Emily Weaver
Margaret Weeks
Christine Weller
Dr. Peter Morris and
Dr. Gretchen Wells
Mr. Milton White
Wieland Studio
Hope Willard Lundt
Liza Williams
Monika Williams
Patricia Wood
Mr. and Mrs. Woody York
Mr. and Mrs. Tom Zanck



2024 Show Supporters

Bronze Benefactors

| | | | |
|-----------------------------------|--|-------------------------------------|-----------------------------------|
| Whitney and Will Akin | Linda D. Dowling | Ande Johnson | Perry Schonfeld |
| Mrs. Enrico de Alessandrini | Dupree's Inc. | Anne Jones | Vee Vee Scott |
| Arch, LLC | Mr. and Mrs. William W. Earthman III | Mr. and Mrs. Douglas Joyce | Beth and Charlie Sell |
| Mr. and Mrs. Lyle Beasley | Stacey Eber | Paula Kinard | Mary Jo and Steve Shankle |
| Mrs. Marsha Blackburn | Laurie and Steven Eskind | Peggy and Randy Kinnard | Mr. and Mrs. Rex Shiver |
| Allison Braswell | EVEREVE | Stefanie Latham | Mr. and Mrs. David Simcox |
| Trisha Bridges | Dian S. Ezell | Mr. and Mrs. Thomas Lunn | Ali and Mike Simpson |
| Mrs. Scott C. Brittain | Mr. and Mrs. Ron D. Farris | Lynde Easterlin Interiors | Mr. and Mrs. Brian Smallwood |
| Kathryn and David Brown | Chloe Firestone | Jane and Don MacLeod | Patti Smallwood |
| Mr. and Mrs. Chris Brush | Victoria Fitzgibbon | Jeffrey Alan Marks | Janette and Andy Smith |
| Susan S. Burch | Karen and Gene Fleming | Debbie and Chip Marston | Josephine and John Smithwick |
| Mr. and Mrs. Gregory Burns | Mr. and Mrs. Mark Fly | Meg White Interiors | Stacie Standifer |
| Cantley & Company | Mrs. Elizabeth Foss and Mr. Bill Riner | Susan Averbuch Michael | Missy and Harley Steffens |
| Mr. and Mrs. Dudley Cheadle | Mr. and Mrs. Joel T. Galanter | James B. Miller, Jr. | Allison Stephens |
| Will Cheek | Carro and Billy Gardner | Mr. and Mrs. Kevin Mitchell | Dr. and Mrs. Steve Szczerba |
| Elizabeth Coble | Susie Garner | Marlene Eskind Moses | Mr. and Mrs. T. Stephen C. Taylor |
| Jane Cohen | Gayle Garrett | Dr. Ryan and Mrs. Jenna Muller | Tham Kannalikhram Designs |
| Mr. and Mrs. Charles W. Cook, Jr. | Mr. and Mrs. Ryan Grace | Nail Family Foundation | Anna M. Thornton |
| Alexandra Cooper | Le Cart by Mary Creagh Graf | Mrs. Laura M. Newman | Josie Thayer |
| William P. Cooper, III | Mr. and Mrs. Sam Halpert | Laura and Charlie Niewold | Mr. and Mrs. George Timmons |
| Jenny and Andy Corts | Tina Hesser | Carissa and Tim Pereira | Brooke and Josh Trusley |
| Nan and Tom Cox | Mr. and Mrs. Bruce Hill | Phaeton Gallery | Luanne and Gary Waltemath |
| Mr. and Mrs. Albert J. Dale, III | Greg Hinote | Susan and John Phillips | Mrs. Cynthia Webber |
| Mr. and Mrs. Evan Davis | Merri Holden | Jane Anne and Dale Pilkinton | Merritt and Jay Webee |
| Linda Davis | Mrs. Nora Vaden Holmes | Mr. and Mrs. Michael D. Regan | Nina Weissenberger |
| Mrs. Wade L. McDevitt | Dr. and Mrs. Stephen Houff | Johnny and Jessica Rich, Lumen Labs | Chef Laura T. Wilson |
| Elizabeth Dingess | Donna Hrozenski | Mr. and Mrs. Dudley Richter | Anne Woolsey |
| Phyllis Doby | Mindy and Buzz Jacoway | Carole Rose | |

Donate to Antiques & Garden Show of Nashville

Your contribution truly makes a positive impact on the city of Nashville, directly benefiting the beautiful **Cheekwood Estate & Garden** and **ECON Charities—Light A Spark and The Family Center**.



Five Reasons To Give

- CHEEKWOOD'S 55-ACRE AMERICAN COUNTRY PLACE ERA ESTATE** serves over 225,000 visitors annually bringing year-round seasonal festivals, world-class art exhibitions, breathtaking gardens, and educational and public programs to Nashville locals and tourists of all ages.
- LIGHT A SPARK** offers fragile families access to shared cultural experiences which counterbalance adverse experiences like abuse, neglect or household dysfunction and strengthen family connections.
- THE FAMILY CENTER** offers group and in-home sessions and parenting seminars aimed at breaking multigenerational cycles of childhood trauma and preventing or mitigating child abuse across Middle Tennessee.
- YOUR DONATION IS 100% TAX-DEDUCTIBLE!** We are very grateful for your generosity.
- THREE GIFTS IN ONE**—Your single gift will help three beneficiaries doing a world of good for the city of Nashville—simple and secure.

continue your grand tour

Luisana Designs

at

ANTIQUE

+ Design

CENTER

of High Point

with 75+ extraordinary antiques dealers

www.hpadc.com

ground level - historic market square

follow us on instagram @antiquedesignct #hpadc

2024 Committee

2024 GENERAL CHAIRMEN

Caroline Cook
Susan Weathersby

HONORARY CHAIRMAN

Bunny Williams

CHAIRMAN EMERITUS

Connie Cigarran

ANTIQUES CHAIRMAN

Janette Smith

ANTIQUES COMMITTEE

Betsy Brittain
Randy Farmer

ANTIQUES DEALER LIAISON

Lee Oakley

BENEFACTOR SOLICITATION LETTER

Ashley Smith
Julia Spickard

BOURBON PARTY CHAIRMEN

Annie Cook
Maggie and Will Finn
Mary and Ryan Keith
Chip Wilkison and Tripp King
Alex McClellan
Kate Scarola
Laurie Spradley

BOURBON PARTY HOSTS

Laura and Marshall Alexander
Elizabeth Anderson
Sarah and Wynne Barton
Clara and Wesley Belden
John White and David Best
Anne Elizabeth Blackburn
Catherine and Austin Branstetter
Lindsey and Dylan Burroughs
Caroline Campbell
Will Carney
Ben Chandler
Glenn Coleman
Caitlin Costello
Farris Ann and Tyler Crace
Jack Crawford
Mallory Ervin and Kyle DeMiola
Casey and Neil Dyer
Anne Ward and Andrew Eshelman
Jenny Fisher
Nick Garzini
Russell Gentry
Carlyle Golden
Shelley Grayson
Grace and Luke Hazen
John Hazen
Robert Grenfel and Shaw Henry
Virginia Hite
Mary Margaret and Davis Horton
Grayson Jones
Caitlin Kelley
Katherine and Bryan Kelly
Chloe Key

Amanda and Ben Khouri
Emme Kirby
Ashley and Jacob Knight
Abby and Kris Lamb
Mackenzie and Blake Laurino
Clare and Keith Levy
Alli Malone
Emily and Barrett Manning
Emma Matthews
Caroline and Andrew Maze
Courtney and John McLarty
Caroline and Hayes McWilliams
Emily and Mike Mitchell
Emily and Clay Money
Caroline Murphy
Shelbye and Will Ortale
Anneka Pace
Bentley and Gray Palmer
Lauren and Will Pendleton
Kathleen and Chris Petro
Carson Pittman
Paige and Hays Ragan
Lucy Ralph
Aggie and Rob Riley
Leslie Rolfe
Erica Rosa
Alexandra and Drew Schneider
Addie and Clint Smith
Taylor and Tyler Smith
Zach Smith
Elizabeth and David Suggs
Caroline and Michael Thompson
Lauren and Alex Trent
Blair and Murphy Troy
Justine and Curtis Vann
Keely Varner
Cameron Perry Walker
Patterson Ware
Blanche Struck and Bryce Wasserman
Terah Kimbrell and Madison Wenzler
Richard White
Marianna Weaver and Paul Zettler
Luke Ziemann

CAFÉ CHAIRMEN

Louise Bryan
Paula Kinard

CATALOG AD SALES CHAIRMAN

Mary Catherine Healy

COMMITTEE KICKOFF CHAIRMEN

Katie and Charlie Gibson
Jennie Garth and Rob Lowe

CUSTOMER SERVICE MOVE-IN CHAIRMEN

Amanda Khouri
Alexandra Norwood

CUSTOMER SERVICE MOVE-IN COMMITTEE

Kirsten Crosby
Alice Denton
Amy Dominik
Gena Dorminey
Brittney Forrister
Collins Hooper
Mary Eugenia Hunt

Dixie Maggart
Coco Pannell
Liz Vaughan
Jess Ziomek

RUN OF SHOW CHAIRMEN

Bet Bruns
Lindsay Ann Kemp
Laura Katherine Wood

DESIGNER OF THE SHOW CHAIRMAN

Jackson Durham

FLORAL AND DESIGN COMMITTEE CHAIRMAN

Lynn Brown

FLORAL AND DESIGN COMMITTEE

Whitney Akin
Jeanna Anderson
Laura Anderson
Shelly Bearden
Janie Berry
Susan Burns
Laura Daniel
Sandy Frazier
Mary Graf
Carey Haynes
Emily Hinkle
Susan Issacs
Dawn Looney
Melanie Marshall
Callen Martin
Lauren McCarthy
Natalie Meeks
Britton Neilson
Felice Oldacre
Lynde Pontius
Leigh Reames
Kerry Roberts
Leslie Sellers
Heather Traylor
Maria White
Mary Elizabeth Wiggins

FIRST LOOK CHAIRMEN

Eric Ross
Ruthann Ross

GARDEN CHAIRMEN

Todd Breyer
Elizabeth Coble
Steve Sirls

GENERAL COMMITTEE

Julie Allen
Shelly Bearden
Melissa Beasley
Janie Berry
LeAnne Bottorff
Laura Bowen
Pamela Brunger
Kemp Buntin
Melissa Chambers
Katherine Cigarran
Liza Coleman
Kirsten Crosby
Christy Echols

Gretchen Ekiss
Laura Furman
Sarah Gardner
Cathy Grier
Kitsie Hayles
Paige Hill
Collins Hooper
Melanie Jeansonne
Beth Johnson
Hallie Jones
Mary Morgan Ketchel
Cathy Krumm
Dawn Looney
Laura Mason
Natalie Miller
Lise Morrow
Molly Sohr
Missy Steffens
Ashley Waltemath
Memma Warfield
Ali Warner

GRATITUDE COMMITTEE CHAIRMAN

Stephanie Galanter

HORTICULTURE CHAIRMEN

Nancy Deaton
Ashley Stringfellow

HOSPITALITY

Sarah Bartholomew
Debbie Best
Martha Chapman
Kae Gallagher
Shea Ghertner
Dana Miller
Kathy Rolfe
Ashley Smith
Julia Spickard

INVITATIONS CALLIGRAPHY

Kathleen Petro

PRINTING

Lorie Duke
Jay Joyner

AUDIOVISUAL

Brooke Trusley

BOOK SIGNING CHAIRMEN

Dione Dewitte
Wesley Stanley
Molly White

FAVOR COMMITTEE

Anne Elizabeth McIntosh

CHAIRMEN SUPPORT

Melissa Beasley
Kitsie Hayles

HOSTESS CHAIRMEN

Linda Graham
Lucy Haynes
Mary Jo Shankle

2024 Committee

LOGISTICS CHAIRMEN

Amy Brown
Lindsay Wells

RESERVED SEATING

Mary Smith

TICKET MANAGEMENT

Alexa Backner
Clayton Kelly
Jane Schapker

LIST MANAGEMENT CHAIRMEN

Debbie Best
Kathy Rolfe
Ashley Smith
Julia Spickard

MAILINGS

Caroline Byrd
Mary Byrd

PHOTOGRAPHERS

Mary Catherine Glassford
Peyton Hoge
Warner Tidwell

PREVIEW PARTY CHAIRMEN

Grace Clayton
Rebecca Rutledge

LECTURE HOSTESS COMMITTEE

Avery Browns
Murray Clayton
Tricia Hall
Jackie Hicks
Mary Gambill
Patricia Gilbert
Mary Glover
Kim Greene
Arlene Johnson
Cindy Lassing
Bracey Mayo

Melissa Mosteller
Elizabeth Papell
Gwyn Spencer
Kathy Williams

PREVIEW PARTY HOSTS

Amy and Kenneth Adams
Elizabeth and Clark Akers
Tori and Dave Alexander
Julie and Dale Allen
Mary Lauren and Lawson Allen
Lexie and James Armstrong
Stephanie and David Bailey
Melanie and David Baker
Jodi and Mark Banks
Sarah and Ben Bartholomew
Shelly and Rob Bearden
Melissa and Jeb Beasley
Liana and Taylor Beery
Nancy and David Benskin
Janie and John Berry
Leanne and Chad Bottorff
Laura and Jim Bowen
Ashley and Will Brockman
Liza and Greg Coleman
Nan and Tom Cox
Amy and Sam Crosby
Kalyn and Colin Crosby
Kirsten and Bruce Crosby
Delia and David Darst
Julie and Adam Dretler
Lori and Gavin Duke
Grace and Brad French
Ashley and Harrison Frist
Elizabeth and Bryan Frist
Julie and Tommy Frist
Heather and Larsen Fusco
Stephanie and Joel Galanter
Sarah and Scott Gardner
Shea and Doug Ghertner
Katie and Charlie Gibson
Amy and Will Greathouse
Sharon and Dayton Hale
Kailey and JR Hand
Karly and Clay Hart

Catherine and Michael Hayes
Kitsie and Ray Hayles
Glenna and Sam Hazen
Jody and Rob Hull
Lindsey and James Hundley
Caylan and Anderson Jarman
Melanie and Michael Jeansonne
Beth and Sean Johnson
Melissa and Chris Johnston
Hallie and Cooper Jones
Corinne and Brock Kidd
Allison and Dan Lechleiter
Jennie Garth and Rob Lowe
Farrell and David Mason
Mary Catherine and David McClellan
Graham and Porter Meadors
Sarah and Jeff Moats
Beth and Rusty Moore
Lise and Will Morrow
Blaire and Davis Murfree
Mamie and Carl Murphy
Whitney and Matt Musser
Caroline and John Nail
Kristin and Carter Paine
Blair and K.B. Parkes
Mary and Jay Perkins
Anne and Steve Puricelli
Mollie and Jeff Reed
Amy and Clay Richards
Amy Liz and John Riddick
Janie and Robert Rolfe
Lynn and Rick Scarola
Caroline and Benson Sloan
Julia and Justin Spickard
Rhymes and Prentice Stabler
Jenny and Paul Steele
Kathy and Tom Stumb
Caroline and Tee Thompson
Sarah and David Thompson
Heather and Mark Traylor
Ashley and Ward Waltemath
Ali and Charles Warner
Barby and Govan White
Jeanette and Clay Whitson
Neel and Graham Young

PREVIEW PARTY RESERVATIONS CHAIRMAN

Deborah Lovett

PREVIEW PARTY RESERVATIONS COMMITTEE

Cindy Blazy
Dave Butler
Peppy Butler
Ruth Cate
Melissa Clough
Joan Harris
Mike Lovett
Kerri Moore
Melissa and Ben Paty
Susan Salley
Kyle Shults
Lyssa Styers
Nancy Tice

SHOW BANK

Bill DeCamp
Jacob Hodges

SHOW FLOOR LOGISTICS

Dean Hitt

SHOW OFFICE

Dana Miller

SOCIAL PRESS

Sylvia Bradbury

VOLUNTEER COORDINATOR

Allie Barry

TICKETING

Elizabeth Foss
Marty McGinty
Avery Stanley

Antiques & Garden Show of Nashville Mission

The Antiques & Garden Show of Nashville is an annual charity event whose purpose is to raise funds for Cheekwood and ECON Charities by exhibiting the highest-quality antiques, landscaped gardens and horticultural items and by offering a related educational outreach program.

Now celebrating our 34th year, the Antiques & Garden Show

has raised **\$10 million for Cheekwood and the Economic Club of Nashville (ECON) Charities.**

Cheekwood is a 55-acre American Country Place Era estate featuring 12 distinct gardens, a woodland sculpture trail, an 8,000-piece permanent art collection, and 30,000-square-foot mansion with historically furnished rooms and galleries. Over 225,000 visitors come to Cheekwood annually for year-round seasonal festivals, world-class art exhibitions, breathtaking gardens, and educational and public programs for all ages.

ECON Charities is a public charity established by the Economic Club of Nashville. ECON Charities partners with and distributes funds to organizations dedicated to enhancing and improving the lives of children and families in the Greater Nashville area.





SARAH BARTHOLOMEW

INTERIOR DESIGN

615.622.5659

www.sarahbartholomew.com

hello@sarahbartholomew.com



Special Thanks

We are so humbled by all of the amazing volunteers who make this Show so exceptional year after year. We are extremely appreciative of MP&F and Parthenon PR for the incredible promotion of this year's Show! It has been a true joy and honor to work alongside the Advisory Committee and board members. We will be forever grateful for their support, encouragement and enthusiasm that have made the 2024 Show so beautiful!

We have been able to do this with the loving support of our families.

West, E.W., Annie, Woodson, Rawlie, Wesley, Ivy and Thomas, we hope we have made you proud!

FINALLY, WE WOULD LIKE TO EXTEND A SPECIAL THANKS TO THE FOLLOWING:

| | | | |
|---------------------------------|----------------------------|---------------------------|-----------------------|
| Eileen Adams | West Cook | Gale Higgs | Fresca Rose |
| Emily L. Alexander, MP&F | Jenny Corts | Chris Hilton | Ruthann and Eric Ross |
| Emily Alexander, Parthenon PR | Kirsten Crosby | Peyton Hoge | Rebecca Rutledge |
| Brayton Alley | Mary Elizabeth Davis, MP&F | Emily Holt, MP&F | Aubrey Ryman |
| Don Bailey, MP&F | Madeline Dean | Deb Hudson | Kathryn Saunders |
| Steven Barclay | Nancy Deaton | Mike Jackson | Derek Schartung |
| Allie Barry | Bill DeCamp | Joyner Hogan, Jay Joyner | Madison Scott, MP&F |
| Sarah Bartholomew | Lauren Geddes Duff | John Nail, Jr. | Margot Shaw |
| Liz Brittain Beck, Parthenon PR | James Dunn | Allison Kearney | Steve Sirls |
| Debbie Best | ECON Volunteers | Beth Kost | Ashley Smith |
| Hope Biber | Ashley Fischetti | Robert Lipman | Janette Smith |
| Steve Blackmon | Elizabeth Foss | Deborah Lovett | Molly Sohr |
| Jamie Bochicchio, Parthenon PR | Jamé Fowler | Jennie Garth and Rob Lowe | Julia Spickard |
| Dean Hitt and Michael Boyd | Stephanie Galanter | Walker Lumber | Avery Stanley |
| Allison Braswell | Sarah Gardner | Jane MacLeod | Missy Steffens |
| Todd Breyer | Sara Garner | Debbie Mathews | Ashley Stringfellow |
| Trisha Bridges | Shea Ghertner | Marty McGinty | Melinda Swann |
| Lynn Brown | Katie and Charlie Gibson | Anne Elizabeth McIntosh | Warner Tidwell |
| Sarah Burningham | Lowell and Ellie Goldman | Dana Miller | Ashley Tomicheck |
| Andrew Byrd | Linda Graham | Ashley Mock, MP&F | Ruth Ann Veach |
| Connie Cigarran | Peter Grimaldi | McKenzie Mullins | Joey Viola |
| Francie Corcoran, Parthenon PR | Jeanine Hackett | Anna Nunnari | Giles Ward |
| Grace Clayton | Lacy Hardison | Celeste Patterson | E.W. Weathersby |
| Elizabeth Coble | Carolyn Harris | Samantha Richter | Cameron Wells |
| Tom Cocke, MP&F | Tom Harwell | Anne Rigel | Chip Wilkison |
| Melinda Coles | Kitsie Hayles | Caroline Rives | Jonathan Young |
| Elizabeth Commins | Laura Haynes, MP&F | Caroline Rives | |
| Corzine & Company | Mary Catherine Healy | Kathy Rolfe | |

A very special thank you to Amy Albright,

Antiques & Garden Show of Nashville Event Director and the driving force behind the 2024 Show.

Thank you, Amy, for making the Show the success that it is!

the
MAGAZINE
of
MUSIC CITY



BACK ISSUES
AVAILABLE ONLINE



Scan here to buy online at SHOP.NASHVILLELIFESTYLES.COM

NASHVILLE
LIFESTYLES

WEDDINGS

AT HOME

swig



PATINA

HOME & GARDEN

----- TENNESSEE -----

• LEIPER'S FORK •

DESIGNER RESOURCES • ANTIQUES • DECOR • GARDEN

WWW.PATINAHOMEANDGARDEN.COM

BROOKE GIANNETTI & STEVE GIANNETTI

4149 OLD HILLSBORO RD, FRANKLIN, TN 37064






BFT LAND DESIGN

BAKER FINCH TESSIER



Designing landscapes that transform possibilities into realities.

 [105 Westpark Dr Suite 335
Brentwood, TN 37027](https://www.bftlanddesign.com/105-Westpark-Dr-Suite-335-Brentwood-TN-37027)

 [615-922-3377](tel:615-922-3377)

 www.bftlanddesign.com

ARTISAN-MADE GIFTS.
UNEXPECTED DESIGN.
SOUTHERN SENSIBILITY.

Visit us at our new Nashville location,
Opening Feb. 2024

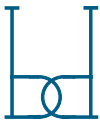
Paddock Place
73 White Bridge Road



MOLLY SOHR

Molly Sohr events is a designed-focused event planning company based in Nashville known for her beautifully designed events, thoughtful details and organized planning. Solely led by Molly Sohr, a Florida-raised, turned Nashville local (for 12+ years now). Molly launched her event business in 2017 with a passion for creating memories that last a lifetime and designs that stand the test of time.

mollysohr.com / hello@mollysohr.com / [@mollysohr](https://www.instagram.com/mollysohr)



BLAIRE DESIGNS

INTERIORS - STYLING - DECOR



blairedesigns.com blaire@blairedesigns.com [@blairedesignsllc](https://www.instagram.com/blairedesignsllc)

Amy Head
Concierge

Scan Me!



Nashville - Germantown 1208 4th Avenue North
Oxford, MS 601.218.4291 Ridgeland, MS

STYLED BY GRAY

STYLED BY
Gray

Consult. Combine. Refine.

Let me elevate your everyday and special occasions with my concierge Personal Styling service. Tailored to meet your unique lifestyle needs, I'm here to curate a wardrobe that speaks to your individuality.

Instagram: @styled_by_gray | Email: Styled_by_gray@yahoo.com



HASTENING DESIGNS

ART • INTERIOR DESIGN • ANTIQUES

hastening@earthlink.net

703-615-2478

Middleburg, Virginia

hasteningdesigns.com



Where Nashville Men Dress. Since 1961.

The Oxford Shop Nashville



Longevity is the result of
the highest standards and...
Consistent Focus.





VOCK *and*
VINTAGE
at Jeff Littrell Antiques

Bulgari c1970

*ANTIQUE &
ESTATE
FINE JEWELRY*

BOOTH
H-40
On the garden

914.522.5414 | @vockandvintage



3303 Wimbledon Rd - **SOLD**

*Rep Buyer



4331 Estes Rd - **SOLD**



 **DIAMOND ELITE LIFE MEMBER**

FRIDRICH & CLARK
REALTY, LLC

615-327-4800

Woodlawn - **SOLD** *Rep Buyer



3505 Foxhall Rd - **SOLD**



SHELLY 615.478.2444

ROB 615.574.9808



The Bearden Brand



Ready to
redefine
luxury in your
home?



PROVIDENCE
INTERIORS
UNIQUE IDEAS AND DESIGN

Contact us for a
consultation.
Let's embark on a
journey to create
your perfect,
collected space.

2209 Bandywood Drive
Nashville, TN 37215
providenceinteriors.com
615-307-1600



MARKETPLACE
INTERIORS

FURNITURE | LIGHTING | ANTIQUES | OBJECTS & FINE ART

2225 BANDYWOOD DRIVE NASHVILLE, TN 37215 | 615.942.6055
MARKETPLACEINTERIORSNASHVILLE.COM | INSTA: MARKETPLACEINTERIORSNASHVILLE

In a world of bundles, insta-books, and cheapest deals, we're proving *time and time again* that booking through a travel advisor is the smartest, easiest, and most rewarding way to travel.

And we've been doing it for 60+ years.

PLEASE GO AWAY

POE TRAVEL

| ON THE GO SINCE 1961 |

poetravel.com 501-376-4171



KATE FIGLER INTERIORS
@KATEFIGLERINTERIORS



203-313-2627
KATEFIGLERINTERIORS.COM



Carved Hardwood Cabinet
Anglo-Indian, 19th century.

In two parts. The upper and lower parts having beautifully carved doors, opening to four shelves. Lovely fleur-de-lis carvings on the upper molding, gadrooned edge, and standing on carved feet.

From the Ann and Gordon Getty Collection.

77 ¾" high, 49" wide, 21 ¾" deep

www.robertofreitas.com
(860) 535-1797



Allen DeCuyper

TOP-RANKED AGENT

Green Hills PARKS
615-300-5971



Phipps
Construction Company, Inc.
(615) 352-5292
www.phippsconstructionco.com



For Updates:

ANTIQUESANDGARDENSHOW.COM

 [ANTIQUESANDGARDENSHOW](https://www.facebook.com/ANTIQUESANDGARDENSHOW)

 [@ANTIQUESANDGARDENSHOW](https://www.instagram.com/ANTIQUESANDGARDENSHOW)



John Nail



Welcome to the 34th year of the Antiques & Garden Show of Nashville. On behalf of our board, we thank you for attending and hope you will be inspired. This year's theme is Welcome to Beautiful.

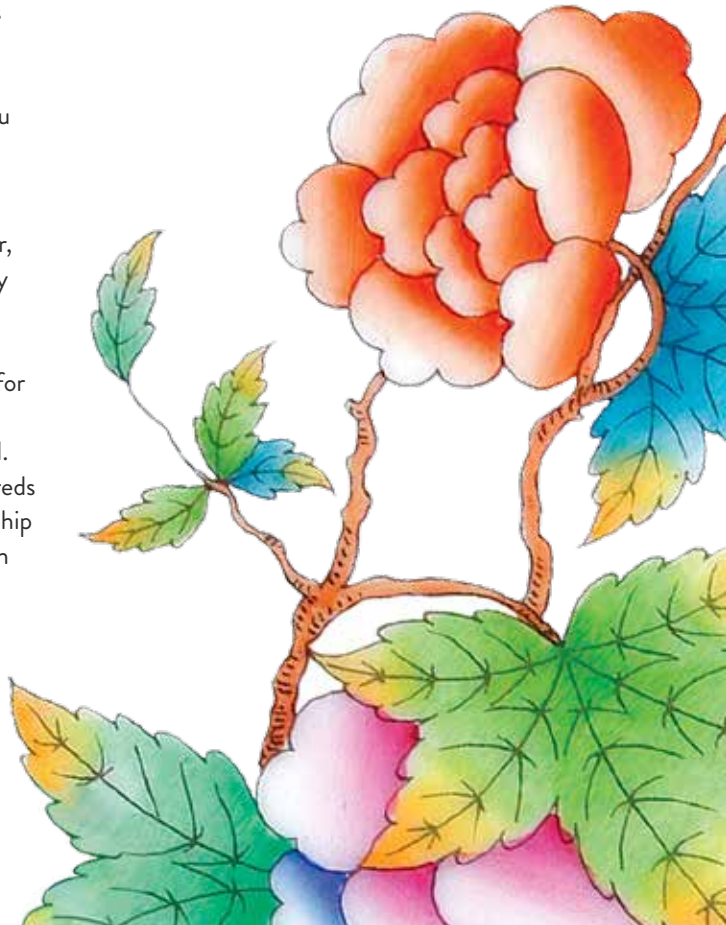
Our reputation is to offer the very best in interior and architectural design, antiques, and gardens with each Show. This is our best yet! Our Show features 150 exclusive antiques and garden presentations showcasing unique items for your home. Indeed, there is something for everyone. We encourage you to explore and be inspired.

This year's impressive lecturers share many titles among them, such as entrepreneur, author, teacher, designer, retailer and collaborator. All are incredibly talented leaders in their fields as tastemakers with magnificent style. Their backgrounds, experience, reputation and knowledge will be very informative for those with an interest in antiques and horticulture. We are eager to listen, share and, again, be inspired. Our Show would not be possible without the hundreds of devoted volunteers and tireless work and leadership of this year's Show chairs, Caroline Cook and Susan Weathersby. We are so grateful to them and the time they have put into this massive endeavor to make it all happen, and to make the 2024 Show the success that it is.

It is a tribute to them, and the Show chairs from prior years, that an event of this magnitude can be achieved from volunteer efforts. It is noteworthy to mention that the proceeds from this Show support two important Nashville charities: Cheekwood Botanical Gardens and ECON Charities. The foundation of the Show's support comes from our corporate sponsors, benefactors and patrons. We could not get this spectacular Show off the ground without their continued support, and we thank you. Also, thank you to our board of directors and Advisory Committee for their unrelenting long-term commitment and guidance to the Show. Most important to all of us is your attendance at the Antiques & Garden Show of Nashville. Our hope is that you will find beauty and inspiration to bring back to your home! Enjoy the Show!

John Nail

ANTIQUES & GARDEN SHOW
BOARD CHAIRMAN



Horticulture Dealers

| | | | |
|---|---|---|---|
| A List Antiques H-54 Cashiers, NC (850) 974-4562 | David A. Zabriskie H-47 Lake Placid, NY (518) 524-5589 | Laval Antiques H-40 Atlanta, GA plaval.com | Rose & Harper H-32 North Hampton, NH roseharper.com |
| Allen Lowman H-28 Gladstone, MO (816) 294-5904 | David Lusk Gallery H-53 Nashville, TN davidluskgallery.com | Luisana Designs and Antiques H-09 Greensboro, NC hpadc.com | Sandstone Gardens H-01 Joplin, MO sandstonegardens.com |
| Artist Collective H-06 Mount Pleasant, SC artistcollectives.org | Dinner pARTy H-52 Alpharetta, GA Instagram @dinnerpartyantiques | M. Fowler Antiques H-55 Miramar Beach, FL mfowlerantiques.com | Scarlett Scales Antiques H-03 Franklin, TN scarlettscales.com |
| Atlanta Planters, LLC H-49 Atlanta, GA atlantaplanters.net | Ed Nash Fine Art H-48 Nashville, TN ednashart.com | Madison James Designs H-12 Paris, KY madisonjames.net | Selective Gardener Catalog H-33 Brentwood, TN selectivegardener.com |
| Avec Moi, Inc. H-42 Franklin, TN avecmoifranklin.com | Gardenary / Nicole Burke H-51 Brentwood, TN gardenary.com | Mario Pollo Antiques H-05 Holliston, MA mariopollo.com | Stony Lonesome H-20 Spring Hill, TN (615) 397-621 |
| Ben & Lael, Inc. H-34 Nashville, TN benandlael.com | Gum Tree Farm H-38 Middleburg, VA gumtreefarmdesigns.com | Marta Gualda H-11 Charlotte, NC martagualda.com | The Compleat Flea H-24 Decatur, GA atlantaantiquescollective.com |
| Benton, Hayden & Associates H-50 Atlanta, GA bentonhaydenantiques.com | Harvesting History H-08 Kill Devil Hills, NC harvesting-history.com | Moss Studios H-27 Fowlerville, MI mossstudiosinc.com | The Side Door H-17 Cashiers, NC (843) 290-2687 |
| Black Sheep Antiques H-57 Harpersville, AL @black_sheep_and_co | Hastening Design Studio H-30 Middleburg, VA hasteningdesigns.com | Nashville Rug Gallery H-25 Nashville, TN nashvillerruggallery.com | Tropical Tapestry H-31 Pawleys Island, SC tropicaltapestry.com |
| Blackwell Botanicals H-29 Richmond, VA blackwellbotanicals.com | Holland MacRae H-41 Atlanta, GA hollandmacrae.com | Outdoor Lighting Perspective H-14 Nashville, TN outdoorlights.com/nashville | VE designs H-07 Spring Branch, TX vedesigns.net |
| Bockhorst Design H-45 Loveland, OH (513) 919-9775 | Jalan Jalan Home H-18 Nashville, TN jalanjalanantiques.com | Peony's Envy H-43 Bernardsville, NJ peonyseenvy.com | Vine + Branch H-15 Andalusia, AL vine-branch.square.site |
| Charleston Garden Works H-21 Charleston, SC charlestongardenworks.com | Jeff Littrell Antiques H-39 Santa Fe, NM (404) 372-1038 | Peridot H-46 Savannah, GA (912) 596-1117 | X-Treme Products H-36 Sevierville, TN tornadoseat.com |
| Cheminee Nest H-16 St. Louis, MO chemineenest.com | Julie Harris H-10 Kansas City, MO jharrisllc.com | Pierre H-37 Nashville, TN (615) 497-5977 | |
| Clayton & Crume H-13 Louisville, KY claytonandcrume.com | Kathy Tobler Silver H-44 Granbury, TX kathytobler.com | Provenance Antiques H-22 Atlanta, GA provenanceantiquesatlanta.com | |
| Cottage Garden H-04 Nashville, TN (615) 841-3551 | Kimball & Bean H-23 Woodstock, IL kimballandbean.com | Reed Smythe H-19 Nashville, TN reedsmythe.com | |
| Cuckoo's Nest H-02 Atlanta, GA (404) 550-6228 | La Cigale H-35 Mount Gretna, PA lacigale-usa.com | Roberts Antiques H-56 Homer, MI (407) 342-6804 | |

Antiques Dealers

Alcott Interiors A-1
Nashville, TN
alcottinteriors.com

Alderman Ford Antiques A-54
Columbia, SC
ebay.com/str/aldermanford

Anthony Scornavacco A-64
St. Paul, MN
anthony scornavacco.com

Artifacts A-4
Atlanta, GA
atlantaantiquescollective.com

Artifacts/Randy Farmer A-3
Atlanta, GA

B.Viz Design A-51
New Orleans, LA
bvizdesign.com

Barometer Fair A-62
Sarasota, FL
barometerfair.com

Brenner Valdez A-41
St Joseph, MO
sheridanloyd.com

Brocante French Antiques A-48
Lake Charles, LA
brocantedfrenchantiques.com

C.m.Leonard antiques A-42
South Salem, NY
(914) 763-8032,
(914) 763-8032

Camilla Dietz Bergeron, LTD A-57
New York, NY
(646) 201-3900

Creekside Antiques and Design
A-38A
Milton, GA
(404) 403-3455,
(404) 403-3455

Dalton Bain A-2
Greensboro, NC
daltonbain.com

Dana Kelly Oriental Rugs A-33
Lexington, KY
danakellyrug.com
(859) 266-7802

Dinan & Chighine A-53
Richmond, Surrey, UK
dinanandchighine.com

Don Fields Craig Ringstad
Antiques A-49
Fairway, KS
(612) 743-5475,
(612) 743-5475

Earle D. Vandekar of
Knightsbridge, Inc. A-13
Downingtown, PA
vandekar.com

Edwin C Skinner A-28
Fairhope, AL
(251) 591-6577,
(251) 591-6577

Embellish Antiques A-66
Chapel Hill, NC
embellishantiques.com

Finnegan Gallery A-11
Chicago, IL
(312) 738-9747

Foreign Affair A-39
Roswell, GA
foreignaffairintl.com

FRENCH BLEU A-70
Vero Beach, FL
(404) 626-4418

H. H. Walker and Company A-68
Waynesville, NC

Hedgerow Antiques A-19
McDonough, GA
hedgerowantiques.com

James Sansum Inc. A-67
New York, NY
jamesansum.com

Jayne Thompson Antiques and
Design A-22
Harrodsburg, KY
jaynethompsonantiques.com

Jeffrey Henkel A-17
Pennington, NJ
(609) 306-4996

Jesse Davis A-26
London, UK
jessedavisantiques.co.uk

Justin Westbrook Antiques A-69
Richmond, VA
justinwestbrookantiques.com

Kelleher Fine Art A-36
Turlock, CA
kelleherfineart.com

Kenny Ball Antiques
A-55—A-56
Charlottesville, VA
kennyballantiques.com

Kevin L. Perry, Inc. A-59
Camden, SC
(941) 504-5765,
(941) 504-5765

Kim Faison Antiques
A-54 - A54B
Richmond, VA
(804) 282-3736,
(804) 282-3736

Kristy Cohn Design A-18B
Nashville, TN
kristycohn.com

Lina's Antiques A-15
Leland, MS
(662) 332-7226

Lotz's Antiques A-50
St. Louis, MO
(314) 518-6931

Mayfair/Hanlon/Crespa A23
St. Simons Island, GA
(813) 254-6111

McDonough Fine Art A-63
Atlanta, GA
mcdonoughfineart.com

Michael Hall Antiques and
Fine Art A-40
Nashville, TN
michaelhallantiques.com

Munday Antiques A-52
Sesser, IL
mundayantiques.com

Prints Charming A-38
Mountain Brook, AL
printscharmingsoho.com

Roberto Freitas American
Antiques & Decorative Arts A-34
Stonington, CT
robertofreitas.com

Roger Winter A-46
Solbury, PA
rogerwinterantiques

Rudnick Architectural and
Decorative Arts A-45
West Palm Beach, FL

Schorr & Dobinsky A-16
Reading, PA
(610) 334-9132

Sherwood Antiques A-58
Auburn, AL
sherwoodantiques.com

Somerset Antiques A-5
Leesburg, VA
(571) 239-0106

Stanford Fine Art A-65
Nashville, TN
stanfordfineart.com

Sylvia Antiques A-27
Nantucket, MA
sylviaantiques.com

The Silver Vault A-47
Woodstock, IL
(815) 337-3990

Thistlethwaite Americana A-35
Upperville, VA
thistleamericana.com

Thomas Fortner Antiques A-44
Memphis, TN
(901) 828-0972

Trace Mayer Antiques A-7
Louisville, KY
museumbees.com

Tucker Payne Antiques A-18
Charleston, SC
tuckerpayneantiques.com

TUTTO dal MONDO A-12
Philadelphia, PA
antiquet.com/tutto.com

Two Maisons A-6
Fort Collins, CO
twomaisons.com

Village Antiques and Interiors A-21
Asheville, NC
villageantiquesonline.com

Village Braider Inc A-31
Plymouth, MA
villagebraider.com

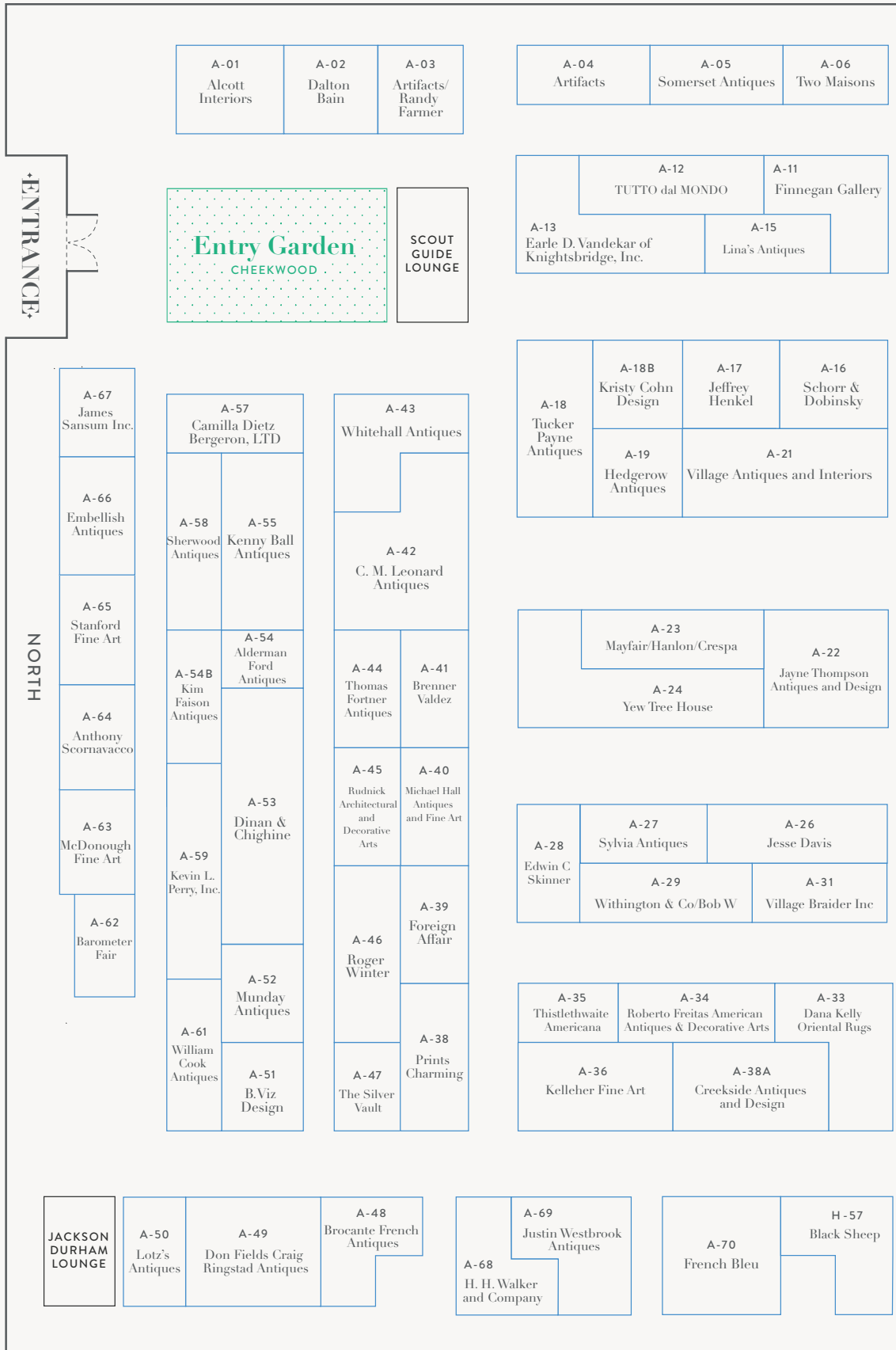
Whitehall Antiques A-43
Chapel Hill, NC
whitehallantiques.com

William Cook Antiques A-61
Hungerford, UK
williamcookantiques.com

Withington & Co/Bob W A-29
Portsmouth, NH
maineantiques.org/dealers/
withington-company/

Yew Tree House A-24
Greenwich, CT
yewtreehouseantiques.com

2024 Floor Map



2024 Floor Map

| | | | | | |
|---------------------------------|----------------------------------|----------------------|----------------------|---|-------------------------------|
| A-07 Trace Mayer Antiques | H-12 Madison James Designs | H-11 Marta Gualda | H-10 Julie Harris | H-09 Luisana Designs and Antiques | H-08 Harvesting History |
|---------------------------------|----------------------------------|----------------------|----------------------|---|-------------------------------|



| | | | | |
|--------------------------|--------------------------|-----------------------|---|----------------------------|
| H-17 The Side Door | H-16 Cheminee Nest | H-15 Vine + Branch | H-14 Outdoor Lighting Perspective | H-13 Clayton & Crume |
| | H-18 Jalan Jalan | | H-19 Reed Smythe | |



| | | | | | |
|-----------------------------|-----------------------------|--|---------------------------------|--|---------------------------|
| H-23 Kimball and Bean | H-22 Provenance Antiques | | H-21 Charleston Garden Works | | H-20 Stony Lonesome |
| | H-24 The Compleat Flea | | H-25 Nashville Rug Gallery | | |

| |
|---------------------------------|
| H-07 VE designs |
| H-06 Artist Collective |
| H-05 Mario Pollo Antiques |
| H-04 Cottage Garden |

SOUTH

| | | | | |
|------------------------------------|------------------------------|-----------------------|---------------------------------------|----------------------|
| H-30 Hastening Design Studio | H-29 Blackwell Botanicals | | H-28 Allen Lowman | H-27 Moss Studios |
| | H-31 Tropical Tapestry | H-32 Rose & Harper | H-33 Selective Gardener Catalog | |



| | | | | | |
|--------------------------------|---------------------------------|----------------|-----------------------------|------------------------|-----------------------------|
| H-39 Jeff Littrell Antiques | H-38 Gum Tree Farm Design | H-37 Pierre | H-36 X-Treme Products | H-35 La Cigale | H-34 Ben & Lael, Inc. |
| | H-40 Laval Antiques | | H-41 Holland MacRae | H-42 Avec Moi, Inc. | |

| |
|-------------------------------------|
| H-03 Scarlett Scales Antiques |
| H-02 Cuckoo's Nest |
| H-01 Sandstone Gardens |

| | | | | | | |
|--------------------------|-------------------------------|-----------------|--|--------------------------------|-----------------------------------|-------------------------|
| H-48 Ed Nash Fine Art | H-47 David A. Zabriskie | H-46 Peridot | H-45 Bockhorst Design | H-44 Kathy Tobler Silver | | H-43 Peony's Envy |
| | H-49 Atlanta Planters | | H-50 Benton, Hayden & Associates | | H-51 Gardenary Nicole Burke | |

| | | | |
|-----------------------------|-------------------------------|-------------------------|----------------------------|
| H-56 Roberts Antiques | H-55 M. Fowler Antiques | H-54 A List Antiques | H-53 David Lusk Gallery |
|-----------------------------|-------------------------------|-------------------------|----------------------------|





TW Capital is proud to be the Founding Sponsor of the Antiques and Garden Show of Nashville.

TW Capital is a Nashville-based private equity investment firm seeking to acquire and grow established, profitable, niche manufacturing companies in the United States.



3100 West End Avenue, Suite 500
Nashville, Tennessee 37203
(615) 256-8061 • twcapital.com