

# ANTIQUES & GARDEN SHOW OF NASHVILLE

FEBRUARY 3 - 5, 2017

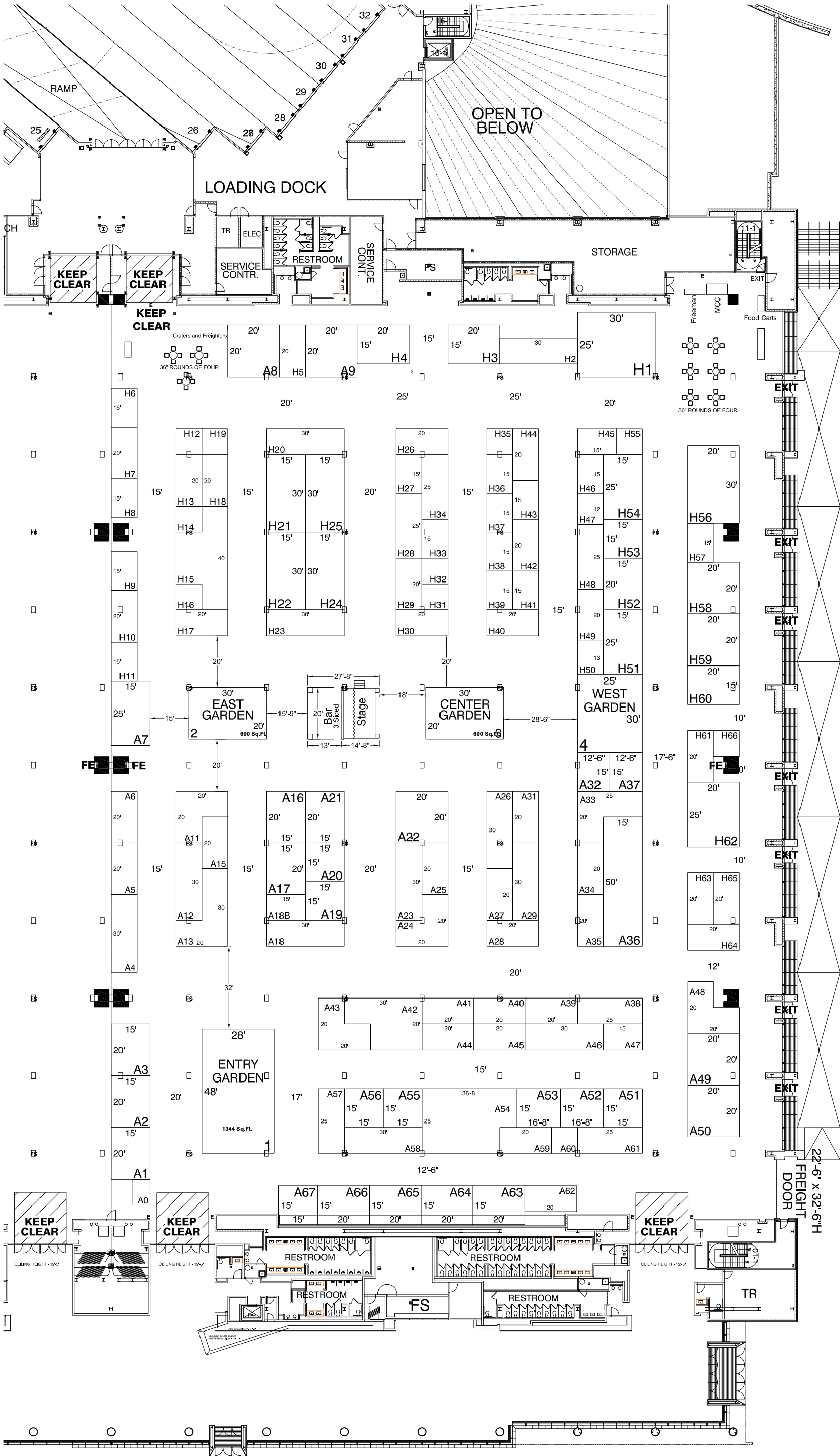
MUSIC CITY CENTER - LEVEL THREE EXHIBIT HALL D - NASHVILLE, TENNESSEE

**REVISION**  
Date: 11/22/2016  
By: T.ROSE/SERDC

**BOOTH COUNT**

Inventory as of 11/22/2016

Dimension	Size	Qty	SqFt
7x10'	70	1	70
10x10'	100	10	1,000
10x12'	120	1	120
10x13'	130	1	130
10x15'	150	17	2,550
12'-6"x15'	188	2	375
10x20'	200	33	6,600
15x15'	225	7	1,575
10x25'	250	6	1,500
15x16'-8"	250	1	250
15x16'-8"	250	1	250
10x30'	300	11	3,300
15x20'	300	14	4,200
Custom	300	4	1,200
Custom	350	1	350
15x25'	375	3	1,125
20x20'	400	7	2,800
Custom	400	1	400
15x30'	450	4	1,800
20x25'	500	1	500
Custom	500	1	500
20x30'	600	3	1,800
Custom	600	1	600
15x50'	750	1	750
25x30'	750	2	1,500
Custom	850	1	850
28x48'	1,344	1	1,344
<b>Totals:</b>	<b>136</b>	<b>1,344</b>	<b>37,439</b>



**BLDG. LEGEND:**

- 13'-0" x 81.5" DOUBLE COLUMN
- 70.5" x 81.5" SINGLE COLUMN
- 70.5" x 81.5" SINGLE COLUMN
- 18'-0" x 28" ELECTRICAL POCKET
- ELECTRICAL POCKETS CONTAIN WATER & DRAINS.
- FE - FIRE EXTINGUISHER IN COLUMNS AT BASE
- FS - FIRE STROBE LIGHTS SUSPENDED FROM CEILING
- E - LIT EXIT SIGNS

EDIBET HALL AND LOADING DOCK FLOORS HAVE A LOAD CAPACITY OF 350 PSF - 64K AXLE LOAD.

**DRAWING INFO**

Passport Line Item Number:  
**474672**  
Facility:  
MUSIC CITY CENTER  
Hall / Level:  
LEVEL THREE EXHIBIT HALL D  
City & State:  
NASHVILLE, TENNESSEE  
Scale: CUSTOM  
Job #: PROPOSAL  
AE: JEANINE HACKETT  
Prod. AE: JEANINE HACKETT  
Started: 11/22/2016  
Started By: TMCKEE/SERDC  
Prod. Branch: NASHVILLE

**FREEMAN**

**Disclaimer** - Every effort has been made to ensure the accuracy of all information contained on this floor plan. However, no warranties, either expressed or implied, are made with respect to this floor plan. If the location of building columns, utilities or other architectural components of the facility is a consideration in the construction or usage of an exhibit, it is the sole responsibility of the exhibitor to physically inspect the facility to verify all dimension and locations.  
© Copyright 2007, Freeman Co. All rights reserved.

**Confidential and Proprietary** - the information contained herein is the proprietary information of Freeman and by accessing the information, the recipient agrees to keep the information confidential and not disclose it to any third party without the prior consent of Freeman. Recipient also agrees to only use the information for its internal evaluation purposes and for no other purpose, without the prior consent of Freeman.

File Path: \\FLOOR PLANS\SHOWS\2017\02-FebruaryAntiques & Garden - Proposal\AGSN 217.dwg | Tab Name: L474672